

Inman Road

Category: Detailed Planning Study/
Possible Federal Aid Corridor
Improvement Project

Location: Inman Road from County Line
Road at South Jeff Davis Road
to SR 92 across from Goza
Road.

SPLOST Detailed Planning Study: \$59,000

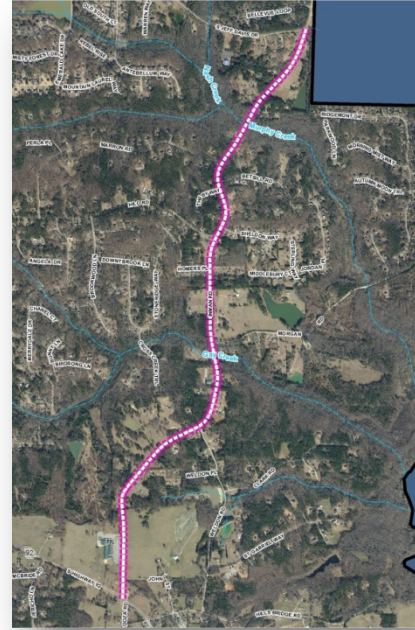
Project Description

Inman Road is a three mile road that extends from County Line Road at South Jeff Davis Road to SR 92 across from Goza Road. It is a two lane road, posted at 35 mph, and has no stop signs or traffic signals between the intersections noted above.

Traffic is expected to increase on Inman as growth continues in Spalding and Clayton Counties and with construction of the East Fayetteville Bypass, which will provide a direct path from Inman Road to SR 85 north of Fayetteville. A common complaint received from citizens about Inman Road is the amount of vehicles speeding on the road.

This project will ensure Inman Road is maintained as a free-flow road meeting current and future transportation needs for safety and efficient traffic movement. Possible operational improvements include: addition of turn lanes at intersections and passing lanes; shoulder build-out and establishment of proper clear zones; correction of sub-standard horizontal and vertical curves, and installation of guardrails.

Location



This project may or may not be advanced beyond the Detailed Planning Study. The final prioritization and funding levels for this project and the other eligible Federal-Aid Corridor Improvement Projects will be set by the Transportation Committee and the Board of Commissioners upon completion of the Detailed Planning Studies.

Operational Improvements Cost if funded:

Federal/State: \$14,400,000

Local Match: \$3,600,000

Detailed Planning Studies

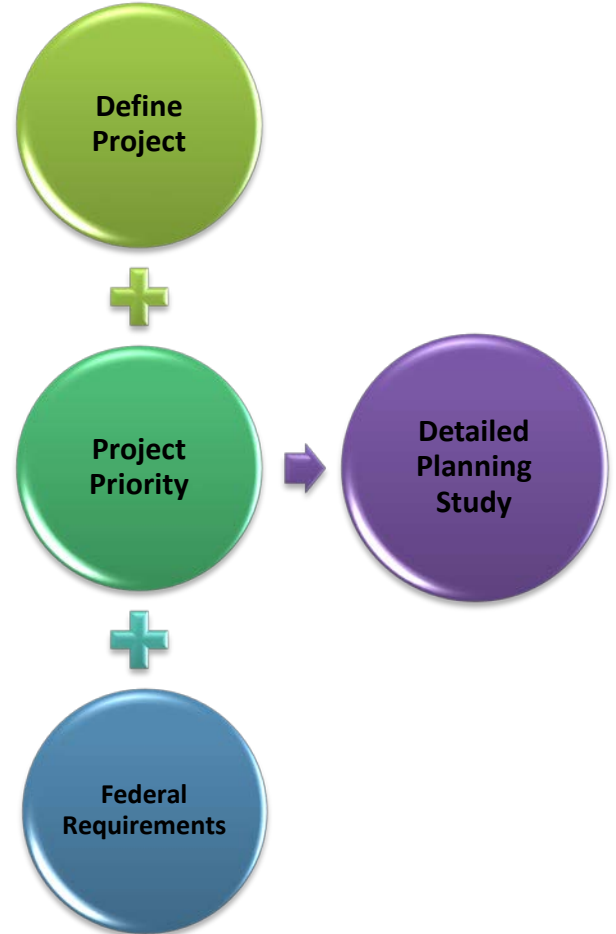
Approximately 3.2% of the SPLOST transportation dollars are allocated for Detailed Planning Studies. The studies have three primary purposes:

1. Define the project;
2. Assist with project prioritization; and
3. Satisfy federal requirements.

On large corridor projects, considerable data collection and engineering analysis is required to make accurate project recommendations. A Detailed Planning Study will collect the minimum data to allow for these analyses and provide results and recommendations for the Board of Commissioners to prioritize and advance the highest-rated projects. Having this information is prudent for local officials making decisions on projects with cost estimates in the tens-of-millions range and is required by state and regional planning agencies if the project is to be competitive in seeking Federal-aid.

Each of the Detailed Planning Studies will complete common tasks in order to address the three goals noted above, including:

- Identify need and purpose;
- Define the project scope;
- Consider alternatives;
- Perform cursory environmental screening;
- Assess impacts to utilities and railroads;
- Assess impacts to private properties;
- Gauge public support and opposition;
- Identify applicable design criteria;
- Develop a schedule; and
- Determine preliminary budget and funding options.



The SR 279 Capacity and Operational Improvement Study is different from the other studies in that the recommendations of the study are not eligible for implementation with SPLOST money. Since this project is entirely along a State Route, the study will be used to encourage the Georgia Department of Transportation to advance the project using state and federal dollars.