

January 14, 2021

**Subject: ITB #1901-B: Lagoon Dredging
Addendum #3**

Gentlemen/Ladies:

Below, please find responses to questions, clarification, or additional information for the above referenced Invitation to Bid. You will need to consider this information when preparing your bid.

1. **The pricing sheet states the volume of sludge in cubic yards, but the unit rate is requesting a per ton cost. Do you have an estimate of how many dry tons or wet tons are in each lagoon?**

No, estimated cubic yardage is provided for informational purposes only.

2. **What is the budget for the project?**

The county does not release budget figures. Please price your bid according to the specifications provided.

3. **Who cleaned the Crosstown Water Treatment lagoons in 2013/2014?**

Gullett Sanitation Services, Inc.

4. **Was the sludge dewatered? If so, how was it dewatered?**

Yes. A belt filter press.

5. **Was the dewatered sludge disposed of in a landfill? If so, what landfill?**

It went to Pine Ridge Landfill, Griffin, GA.

6. **Where can we set up to de-water the sludge?**

Please see the attached drawings. Attachments 1 & 2.

7. **Are there any weight restrictions on TDK Blvd.?**

There are no weight requirements on TDK Blvd it's an industrial area.

8. **How much power is there?**

At each location there is 480V, 60HZ, 3 phase, 100A supply available. (see attachment)

9. **Where can we get utility water access?**

At Crosstown there is an accessible yard hydrant by the North Lagoon. Lagoon water is also an acceptable water source that can be recycled back to the Lagoons.

- 10. Who pays for the electricity and water?**
Fayette County Water System.
- 11. Do we need to use a NSF polymer?**
NSF approved polymer **IS** required – solids processing water will be recycled to produce drinking water.
- 12. Is there anywhere we can't set up?**
Please see the attached drawings. Attachments 1 & 2.
- 13. May we work at night?**
Yes. Normal day shift hours are 7 am – 7 pm. If you plan to work outside the normal day shift hours, you shall give the Plant Manager 24 hour prior notice.
- 14. Is the sludge the same in both ponds at each plant?**
Yes, the sludge generated is the same in both lagoons but differentiated between both plants. The Alum content between the plants is different.
- 15. What do you use to clean the water?**
Alum and lime.
- 16. Does water come into both ponds at the same time or does it alternate?**
It can be utilized either way and both can be isolated separately.
- 17. Are we allowed to stockpile & for how long?**
Stockpiling is authorized for 24-48 hours worth of material.
- 18. Do any of the ponds have liners?**
No liners.
- 19. Where does the water go from the lagoon?**
The water from the lagoons is normally pumped from the lagoons to the day pond.
- 20. The revised Bid Schedule in Addendum #1 has the unit pricing of tons but it is still multiplied by Cubic Yards. If we are to bid it by the unit price of Tons we need to multiply it by tons to come up with the Figure in the Total Cost Column.**
The cubic yardage column on the addendum 2 price sheet was not intended to be a multiplier (the numbers are for informational purposes only – feel free to NOT use them if they do not inform your estimation process). The pricing sheet has been updated and is attached (attachment 3). You shall use the new pricing sheet when submitting your bid.
- 21. Is an NSF polymer required for use in mechanical dewatering, if needed?**
NSF approved polymer **IS** required – solids processing water will be recycled to produce drinking water.

- 22. Will the Contractor be able to clean each lagoon at each plant in succession immediately following completion of the prior lagoon without any delays? If not, how much time will exist between cleaning of the lagoons at each plant?**
The contractor will be able to move to the second lagoon immediately following completion of the first.
- 23. What are the typical hours and days the facilities are open?**
These facilities operate 24 hrs. per day, 7 days per week, 365 days per year. Regular day shift hours are 7 am – 7 pm.
- 24. What chemicals are utilized in the facility's water treatment processes that will be present in the lagoon sludge?**
Alum and lime.
- 25. How will completion of the cleaning of each lagoon be determined?**
FCW staff will measure the remaining residual. There should be no more than 6 inches of residue remaining.
- 26. Where may the return water from mechanical dewatering operations be discharged to? What limitations exist (i.e. – flow rate, other), if any, on the return water discharge?**
The discharge from the dewatering process should be directed to the lagoon that is **NOT** being cleaned. Every attempt should be undertaken by the contractor to make the return flow as clean as possible so as not to RE-LOAD the lagoon with solids. There are no foreseeable limitations; however, the contractor shall work closely with plant managers and staff to assure the cleaning process is not interfering with regular plant operation.
- 27. What is the distance to the discharge location from where dewatering will occur?**
Discharge will be at the lagoon site – see attached diagram.
- 28. Will the lagoons remain out of service during clean out?**
The lagoons will be isolated. The lagoon being cleaned will not have regular plant process flow nor lagoon dewatering flow discharged to it.
- 29. Will the lagoons be decanted?**
If, during set up, the contractor indicates they wish for the lagoon to be decanted, this can be accomplished prior to starting the process.
- 30. When was the last time these lagoons were cleaned?**
2013/2014
- a. How many tons were disposed of at that time?**
Approximately 1,600 wet tons
- b. Who was the last awarded contractor to perform this work? What was their rate of service or price per ton? Are there past Bid Tabs available?**
Gullett Sanitation Services, Inc. was awarded P890. The bid tally, in lump sum form, from P890 is available here:
<https://fayettecountygga.gov/purchasing/archives/pdf/890TallySheet.pdf>

- 31. What is the budget or Engineer's estimate for this project?**
The county does not release budget figures. Please price your bid according to the specifications provided.
- 32. Please provide a copy of the Attendance Sheet from the pre-bid meeting.**
This is posted on our website and has been emailed to all attendees.
<https://fayettecountyga.gov/purchasing/archives/2021/1901-B-Sign-In-Sheet.pdf>
- 33. Please provide the information for the Virtual Bid Opening.**
You may view the virtual bid opening here:
<https://livestream.com/accounts/4819394?query=fayette%20county&cat=account>
- 34. Please clarify if Bidder is required to submit with their bid response the "Letter stating ability to accept anticipated character & volume..." as listed in the Checklist of Required Documents. Clarification is needed as the referenced Scope of Work, Phase 1, Item 1 states "Prior to any dredging activities the chosen contractor shall provide Fayette County all necessary documentation...."**
In order to avoid any unnecessary delays or need for lengthy stockpiling of the dewatered product, FCW is requiring that all bidders demonstrate their plan for legal and adequate disposal / reuse of the end product. If that plan includes landfill disposal, it is important for the contractor to get preliminary approval from the disposal facility ahead of the project to make sure they will accept the product.
- 35. Would the County consider adding a separate line item for mob/demob for each lagoon instead of having it tied to the volume, particularly since the County may partially award?**
No.
- 36. Would the County consider eliminating the possibility of partial awarding?**
No. The County maintains the right to award by Phase. We will not award by lagoon.
- 37. What amperage is available at each site for the 3-phase, 480V electrical power supply?**
100 Amp Service
- 38. Is a daily composite of each trailer load and the use of a moisture analyzer unit acceptable for determining the % solids concentration and calculation of dry tons hauled/disposed?**
Yes.
- 39. Can the filtrated water be returned to the lagoon being dredged?**
Yes the water can be returned back to lagoon.
- 40. What is the budget for the project?**
The county does not release budget figures. Please price your bid according to the specifications provided.

41. What was the total cost of the last project when Crosstown was dredged and dewatered?
This information is not available.
42. How many dry tons were removed?
This information is not available.
43. What was the percent solids achieved on the last project?
This information is not available.
44. How many wet tons were disposed of at the landfill?
Approximately 1,600 wet tons.
45. How were the solids dewatered or what type of dewatering equipment was used?
A belt press filter.
46. How many days did it take to complete the last project?
This information is not available.
47. What company did the hauling on the last project?
Gullett Sanitation Services, Inc.
48. We would like to request the County to base the bid on a dry ton unit rate of sludge removed as opposed to wet tons or cubic yards. This is typically how the industry approaches this type of municipal solids dredging and dewatering work, as it is much easier for both the contractor and the client to be confident in the quantities of actual solids being removed, in real-time while the project is being executed. The dry ton rate motivates contractors to dry the sludge as much as possible, resulting in the County paying for hauling and disposal of less water and more actual solids.
Fayette County Water requires lump sum pricing per lagoon unit.
49. We would request the mobilization and demobilization costs be broken out as separate cost line items. By doing this the dry ton unit rate is not inflated to cover the cost of getting equipment to the site or back to the contractor's yard. This is important in the event the County has more budget than submitted prices wants to remove additional material from the ponds. This way the County is not paying an additional amount per dry ton for mobilization and demobilization costs.
Fayette County Water requires lump sum pricing per lagoon unit.
50. We would request an additional line item be added for the movement of equipment from Crosstown WTP to South Fayette WTP. This allows the contractor to be compensated for the costs associated with breaking down equipment at the Crosstown WTP, moving and setting up at South Fayette WTP and the county does not have this hidden cost in the dry ton unit rate. This cost could also be removed from the contract in the event the County decided to award the work at the different WTPs to two different contractors.
Fayette County Water requires lump sum pricing per lagoon unit.

51. In a situation where a contractor is dewatering the residuals and disposing of the dewatered residuals at a properly accredited landfill we ask that Fayette County reconsider the passing on of the ownership (or Title) of the residuals as stated in the Scope of Work immediately after the description of Phase 1 and Phase 2 work. While we will take responsibility of the residuals to properly handle, transport and ensure disposal is performed in accordance with applicable legislation in a landfill authorized through their operating permit to accept residuals, the liability as the generator of the residuals material remains with Fayette County. In addition, Fayette County would need to be willing to sign off on a waste profile for the landfill as said generator of the residuals. So our request is that statement as it is written, be removed, or is modified to only apply to situations where the material is land applied.

Fayette County hereby deletes the phrase, "The contractor shall take title of the dewatered sludge upon removing it from the Lagoons at each site". The following stipulation is inserted in its place, "Prior to removing any dewatered solids from Fayette County owned facilities, the contractor shall provide certification of the disposal site. The contractor shall work with Fayette County Water Plant Staff to adequately sample and test the dewatered sludge prior to disposal, to ensure that it complies with all pertinent and appropriate federal, state, and local regulations."

52. Given that Addendum #2, (4) – states "Unit pricing per wet ton as reflected on required landfill manifests." will you be issuing a revised PRICING SHEET to reflect wet tons versus cubic yards?

Pricing sheet has been revised to reflect lump sum pricing per lagoon unit.

53. We did not see a Bid Bond Form attached. Is there a bid bond form that the County uses – or could we use our standard form?

Please use a standard form.

54. Will the updated 12/18/2020 pricing sheet be the final version? There were several questions about this during the pre-bid.

Since the time for questions has passed, we do not anticipate any further changes to the new pricing sheet which is included with this addendum. The new pricing sheet, attachment 3, shall be used when submitting bids.

55. In our review of the documents, we do not see any requirements for state prevailing wages on the project. Would you confirm these wages are not required for the project?

Georgia does not have a prevailing wage law.

Received by (Name): _____ Company _____

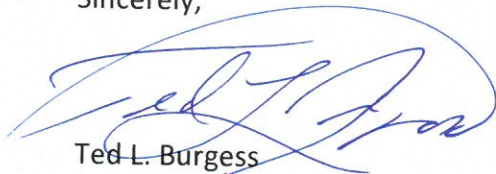
Note: If this addendum is not returned to the Fayette County Purchasing Department or if it is returned not signed, responding individuals, companies or other organizations will still be responsible for the requirements of this addendum and the specifications or changes herein.

The opening date for this ITB has not changed. **The due date and time are 12:00 p.m., Thursday, January 28, 2021.** Bids must be received by the Purchasing Department at the address above, Suite 204, at or before the opening date and time.

The deadline for inquiries has passed, so the Purchasing Department will not be able to accept any additional questions after this time.

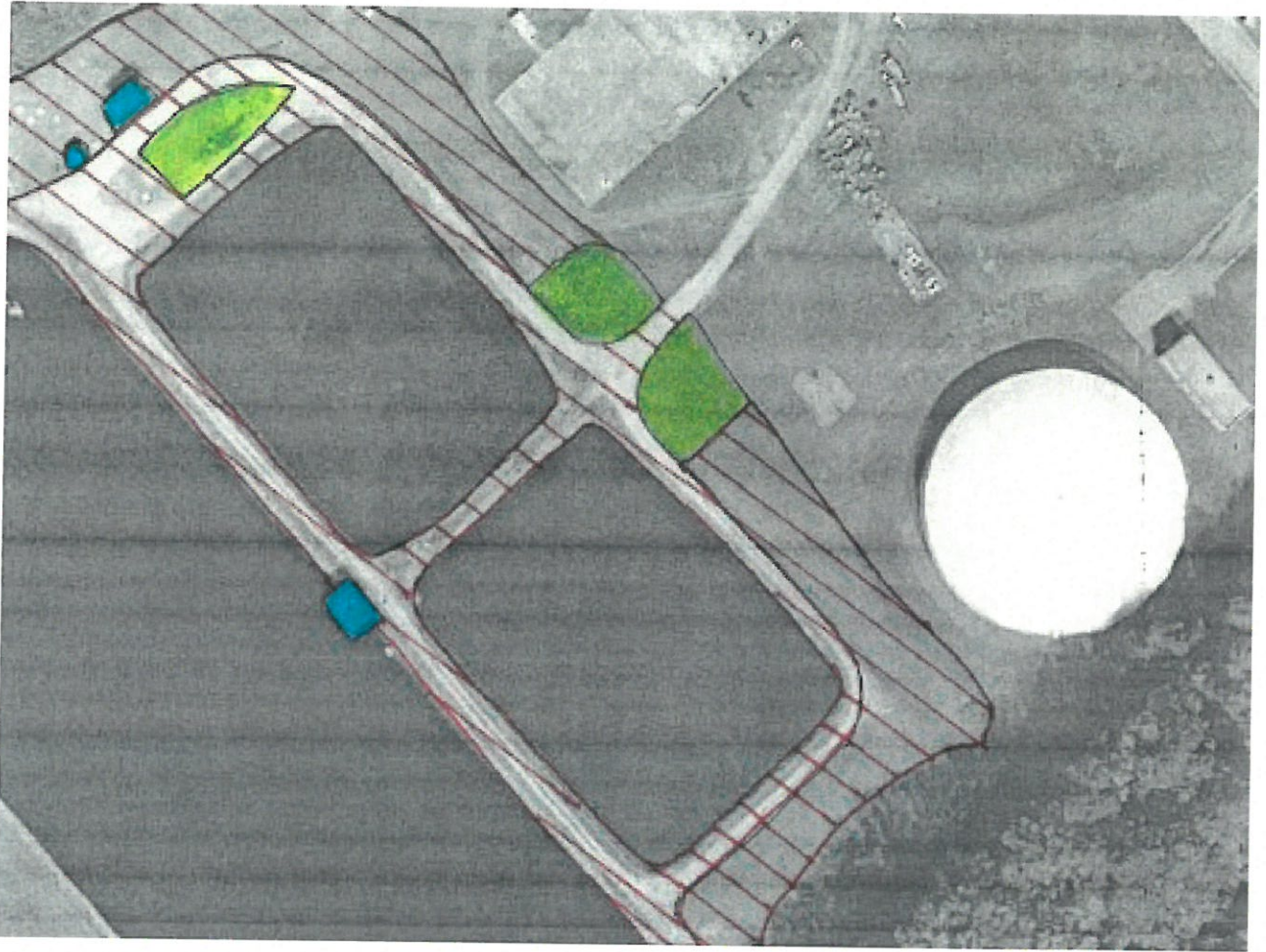
If you have questions, please contact Natasha Duggan, Contract Administrator at (770) 305-5150, fax (770) 719-5534 or email at nduggan@fayettecountyga.gov.

Sincerely,



Ted L. Burgess
Director of Purchasing

CROSSTOWN AND SOUTH FAYETTE WATER TREATMENT LAGOON LOCATIONS

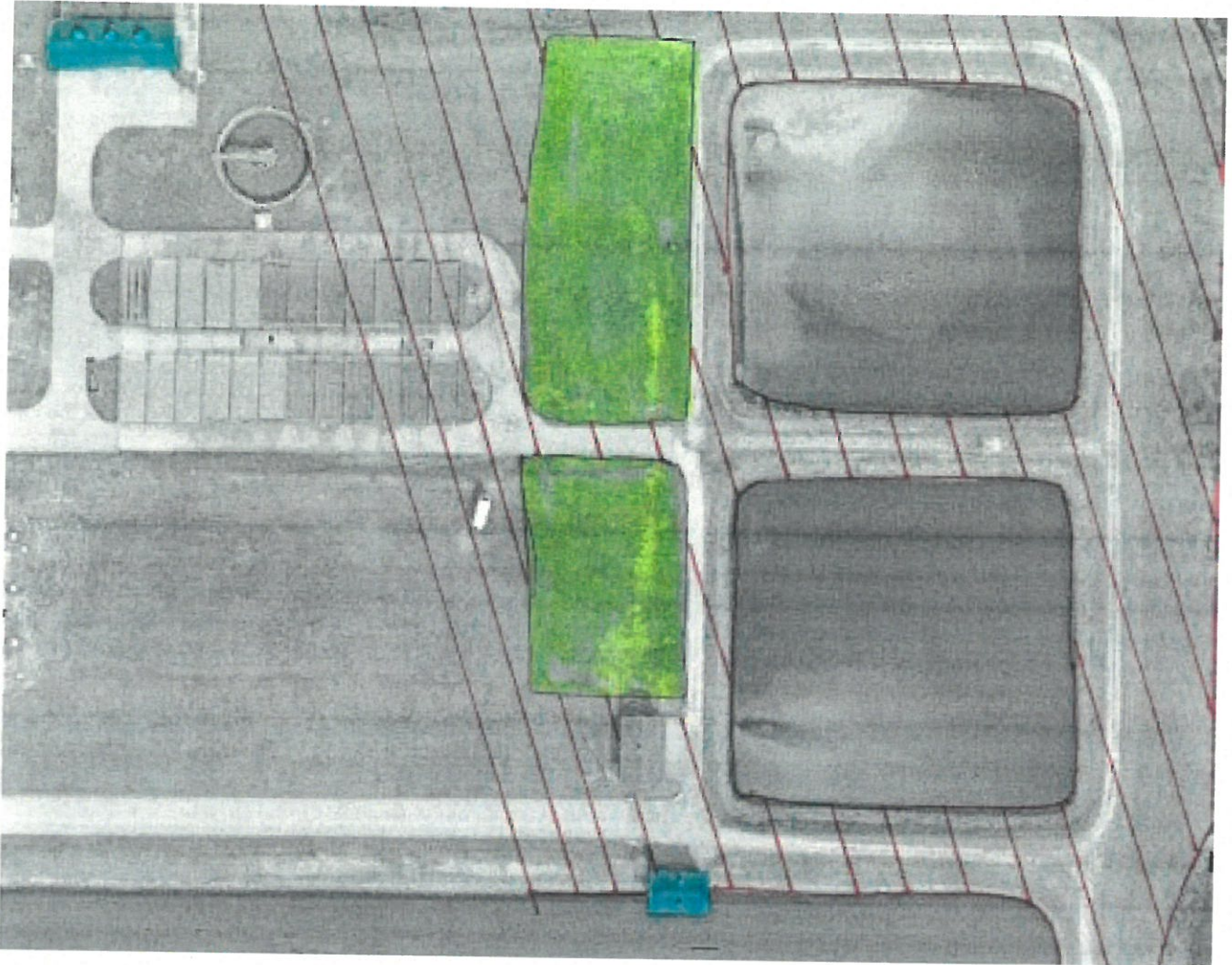


CROSSTOWN WATER TREATMENT PLANT, 3500 TDK BLVD, PEACHTREE CITY GA, 30269

BLUE	BLUE RECTANGLES REPRESENT AVAILABLE POWER SOURCES. THE POWER AVAILABLE IS 480 V, 3 PHASE, 60 HZ, 100 AMP. BLUE CIRCLE REPRESENTS AVAILABLE FRESH WATER YARD HYDRANT.
YELLOW	YELLOW LOCATIONS REPRESENT THE ACCEPTABLE LOCATIONS TO SET UP EQUIPMENT FOR DREDGING.
RED LINES	RED LINES REPRESENT LOCATIONS THAT ARE UNACCAPTABLE FOR EQUIPMENT TO BE SET UP FOR DREDGING PURPOSES.

NOTE: WATER FROM THE LAGOONS MAY BE USED FOR DREDGING EQUIPMENT AND WATER MAY BE DRAINED BACK TO THE LAGOONS AS RECYCLABLE WATER SOURCE.

CROSSTOWN AND SOUTH FAYETTE WATER TREATMENT LAGOON LOCATIONS



SOUTH FAYETTE WATER TREATMENT PLANT, 880 ANTIOCH RD, FAYETTEVILLE GA, 30215

BLUE	BLUE RECTANGLES REPRESENT AVAILABLE POWER SOURCES. THE POWER AVAILABLE IS 480 V, 3 PHASE, 60 HZ, 100 AMP. BLUE CIRCLE REPRESENTS AVAILABLE FRESH WATER YARD HYDRANT.
YELLOW	YELLOW LOCATIONS REPRESENT THE ACCEPTABLE LOCATIONS TO SET UP EQUIPMENT FOR DREDGING.
RED LINES	RED LINES REPRESENT LOCATIONS THAT ARE UNACCAPTABLE FOR EQUIPMENT TO BE SET UP FOR DREDGING PURPOSES.

NOTE: WATER FROM THE LAGOONS MAY BE USED FOR DREDGING EQUIPMENT AND WATER MAY BE DRAINED BACK TO THE LAGOONS AS RECYCLABLE WATER SOURCE.

Pricing Sheet - updated 1/14/2021

ITB #1901-B: Lagoon Dredging

Attachment 3

Site	Total Cost
Phase 1 Crosstown Only	
Crosstown WTP - North Lagoon	\$
Crosstown WTP - South Lagoon	\$
Phase 1 Total	\$
Phase 2 South Fayette Only	
South Fayette WTP - North Lagoon	\$
South Fayette WTP - South Lagoon	\$
Phase 2 Total	\$
Total Phase 1 & Phase 2	\$
Less: Discount if awarded both Phases	-
Net Total after discount (Total Phase 1 & Phase 2 less Discount)	\$