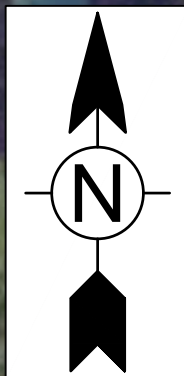


FAYETTE COUNTY PATRICIA LANE CULVERT REPLACEMENT PROJECT PROJECT NUMBER 17SAK



1899 POWERS FERRY ROAD SE, SUITE 400
ATLANTA, GEORGIA 30339
TEL: (770) 850-0949 FAX: (770) 850-0950

www.tetratech.com



NOT TO SCALE

INDEX OF DRAWINGS	
Sheet No.	Title
GENERAL	
G-000	COVER SHEET AND INDEX OF DRAWINGS
G-001	LEGEND AND ABBREVIATIONS
G-002	GENERAL NOTES
CIVIL	
C-101	EXISTING CONDITIONS
C-102	DEMOLITION PLAN
C-103	SITE PLAN
C-104	GRADING AND DRAINAGE PLAN
C-105	EROSION CONTROL PLAN
C-501	CONSTRUCTION DETAILS
C-502	CONSTRUCTION DETAILS
C-503	CONSTRUCTION DETAILS
C-504	CONSTRUCTION DETAILS
C-505	EROSION CONTROL DETAILS
C-506	ESPC PLAN



GSWCC LEVEL II
CERT. # 0000073529

PROJECT LOCATION:

151 PATRICIA LANE
FAYETTEVILLE, GA 30214

CLIENT INFORMATION:

FAYETTE COUNTY
140 STONEWALL AVE W. SUITE 203
FAYETTEVILLE, GA 30214

Tt PROJECT No.:

200-01297-18002

CLIENT PROJECT No.:

17SAK

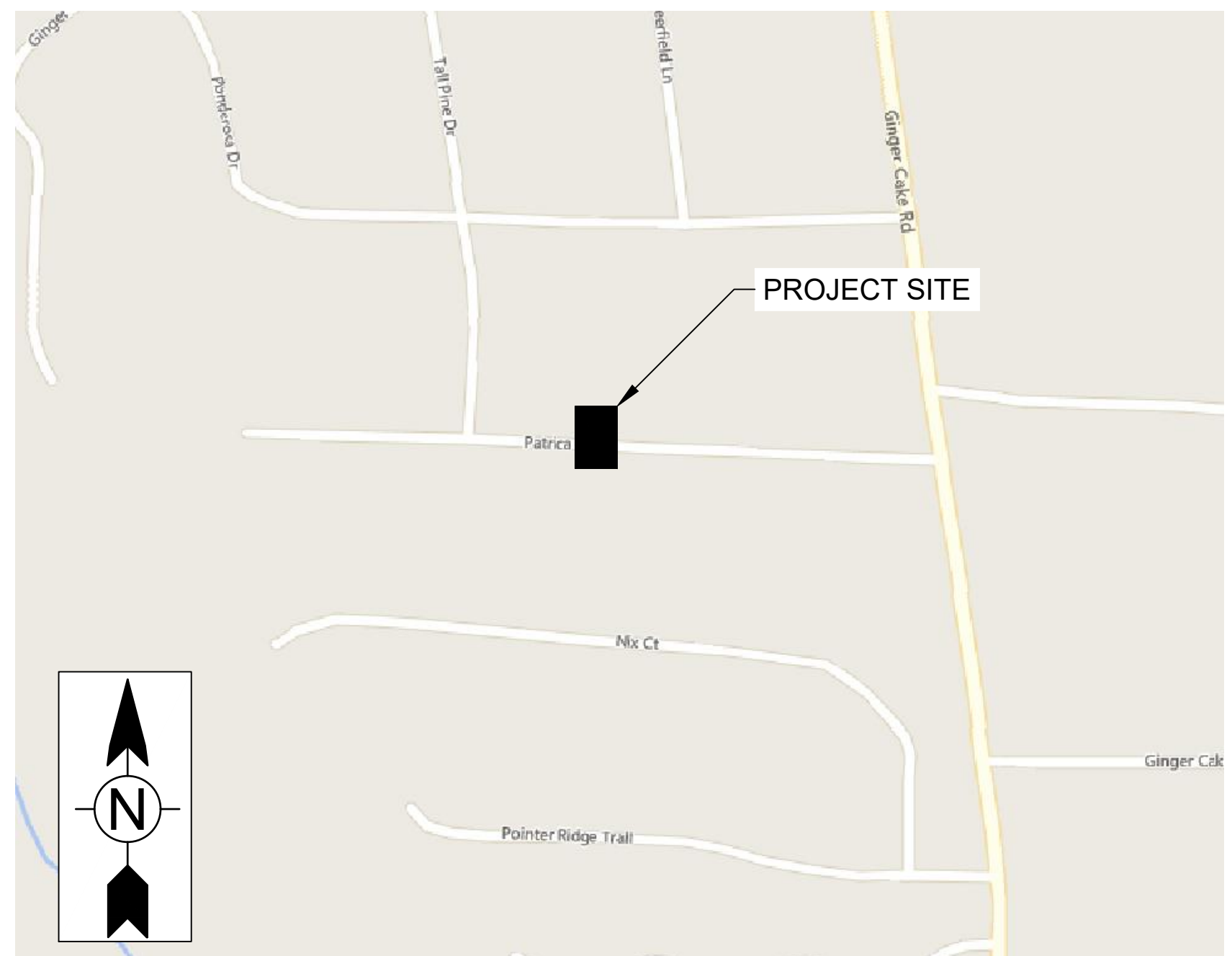
PROJECT DESCRIPTION / NOTES:

REFERENCE DATUM: NAD83 GEORGIA STATE PLANE, WEST ZONE, US FOOT

ISSUED:

ISSUED FOR CONSTRUCTION - 02/28/20

VICINITY MAP:



NOT TO SCALE

2/28/2020 1:31:54 PM - O:\PROJECTS\ATLANTA\ER01297\200-01297-18002\CAD\SHEETFILES\G-001 - LEGEND AND ABBREVIATIONS.DWG - GULMIRE, CALEB

LIST OF STANDARD ABBREVIATIONS

A AAP AARV AAV AB ABAN ABRSV ABS ABV AC ACCOMP ACP ADDM ADH AFF AFG AFS AHD AL ALT AMP AMT APRX ARCH AS ASPH ASSY AVE A/C AVV B BAF BCV BF BFV BHP BI BITUM B/L BLDG BLK BM BOC BOT BP BRG BSP BV BW BWW C CAP CA CAV CB CCC CE CFM CFS CI CIP CISP CJ CIRCUIT CL CL2 CLF CLR CLVT CMP CMPA CMU CND CNR CO CO2 COAG COL COM CONC CONN CONSTR CONT CONTR COORD CQ CP CPA CPLG CPVC CR CS CSG CTV CY CYL C&G C/C D DAT DBL DC DEMO DEPT DESC DET DF DIA DIFF DIM DIP DISCH DIR DMH DN DR DV DW DWG DWV	ALARM ANNUNCIATOR PANEL AUTOMATIC AIR RELEASE VALVE AUTOMATIC AIR VENT ANCHOR BOLT ABANDON(ED) ABRASIVE ACRYLONITRILE BUTADIENE STYRENE ABOVE ALTERNATING CURRENT ASPHALT-COATED CORRUGATED METAL PIPE ASBESTOS CEMENT PIPE ADDENDUM ADHESIVE ABOVE FINISHED FLOOR ABOVE FINISHED GRADE ABOVE FINISHED SLAB AHEAD ALUMINUM ALTERNATE AMPERE AMOUNT APPROXIMATE(LY) ARCHITECT(URAL) ALLUM SOLUTION ASPHALT ASSEMBLY AVENUE AIR CONDITIONING AIR/VACUUM AIR VALVE BAFFLE BALL CHECK VALVE BLIND FLANGE BUTTERFLY VALVE BRAKE HORSEPOWER BLACK IRON BITUMINOUS OR BITUMASTIC BASELINE BUILDING BLOCK BENCH MARK BACK OF CURB BOTTOM BASE PLATE BEARING BLACK STEEL PIPE BALL VALVE BOTH WAYS BACKWASH WATER CAPACITY COMPRESSED AIR COMBINATION AIR VALVE CATCH BASIN CHLORINE CONTACT CHAMBER CHLORINATED EFFLUENT CUBIC FEET PER MINUTE CUBIC FEET PER SECOND CHECK VALVE CAST IRON CAST IRON PIPE CAST IRON SOIL PIPE CONSTRUCTION JOINT CIRCUIT CENTER LINE CHLORINE GAS CHAIN LINK FENCE CLEAR OR CLEARANCE CULVERT CORRUGATED METAL PIPE CORRUGATED METAL PIPE ARCH CONCRETE MASONRY UNIT CONDUIT CORNER CLEAN OUT CARBON DIOXIDE COAGULANT COLUMN COMMON CONCRETE CONNECTION CONSTRUCT(ION) CONTINUOUS CONTRACT(OR) COORDINATE CORNER CONCRETE PIPE CONCRETE PIPE ARCH COUPLING CHLORINATED POLYVINYL CHLORIDE CONCENTRIC REDUCER CASING CABLE TELEVISION CUBIC YARD CYLINDER CURB AND GUTTER CENTER TO CENTER DATUM DOUBLE DIRECT CURRENT DEMOLITION DEPARTMENT DESCRIPTION DETAIL DIESEL FUEL DUCTILE IRON DIAMETER DIFFUSER DIMENSION DUCTILE IRON PIPE DISCHARGE DIRECTION DROP MANHOLE DOWN DRAIN DIAPHRAGM VALVE DRIVEWAY DRAWING DRAIN, WASTE, AND VENT	E EA ECC EFF EFL E/L EL ELAST ELEC EMER EMC ENGR EP EPDM EPRF EQUIP ER ESTM EST EW EXC EXP EXST EXST GR EXT EXTN F FAB FCA FB FCV FD FDN FE FHY FIGURE FIN FIN FLR FIN GR FL FLG FLW FLTR FM FPM FPS FRP FT FUT FV FW FWP F/F G GA GAL GALV GIP GJ GND GPD GPH GPM GPS GR GRTG GS GSP GSR GST GT GV H HB HD HDPE HDR HFA HGR HGT HNDRL HOA HORIZ HP HPA HR HVAC HWL HWY HZ I ID IN INF INT INTR INV IP IPS IR IW J JB JT K K KPL KV KVA KW KWH L L LAB LAM LATL LAV	EAST EACH ECCENTRIC EACH FACE EFFLUENT EASEMENT LINE ELEVATION ELASTOMERIC ELECTRICAL EMERGENCY ENCASE(MENT) ENGINEER EDGE OF PAVEMENT ETHYLENE PROPYLENE DIENE MONOMER EXPLOSION PROOF EQUIPMENT ECCENTRIC REDUCER EASEMENT ESTIMATE(D) EACH WAY EXCAVATE EXPANSION EXISTING EXISTING GRADE EXTERIOR EXTENSION FABRICATE(D) FLANGED COUPLING ADAPTER FLAT BAR FLOW-CONTROL VALVE FLOOR DRAIN FOUNDATION FILTER(ED) EFFLUENT FIRE HYDRANT FIGURE FINISH(ED) FINISH FLOOR FINISH GRADE FLUORIDE FLANGE(D) FLOW LINE FILTER FORCE MAIN FEET PER MINUTE FEET PER SECOND FIBERGLASS REINFORCED PLASTIC FOOT OR FEET FUTURE FOOT VALVE FINISHED WATER FACTORY WIRED PANEL FACE TO FACE GAUGE GALLON(S) GALVANIZED GALVANIZED IRON PIPE GROOVE JOINT GROUND GALLONS PER DAY GALLONS PER HOUR GALLONS PER MINUTE GALLONS PER SECOND GRADE GRATING GALVANIZED STEEL GALVANIZED STEEL PIPE GROUND STORAGE RESERVOIR GROUND STORAGE TANK GROUT GATE VALVE HOSE BIBB HEAVY-DUTY HIGH-DENSITY POLYETHYLENE HYDRAULIC HYDROFLUOSILICIC ACID HANGER HEIGHT HAND RAIL HAND-OFF-AUTO HORIZONTAL HORSEPOWER HIGH PRESSURE AIR HOUR HEATING, VENTILATION, AND AIR CONDITIONING HIGH WATER LEVEL HIGHWAY HERTZ INSIDE DIAMETER INCH(ES) INFLUENT INTERSECTION INTERIOR INVERT IRON PIPE INTERNATIONAL PIPE STANDARD INTERNAL RECYCLE IRRIGATION WATER JUNCTION BOX JOINT KIP (1,000 LB) KICK PLATE KILOVOLT KILOVOLT-AMPERE KILOWATT KILOWATT-HOUR LEFT LABORATORY LAMINATE OR LAMINATION LATERAL LAVATORY	LENGTH POUND(S) LINEAR FEET LIGHT POLE LINE SLURRY LIME STABILIZED SLUDGE LOUVER LOW WATER LEVEL M M MAINT MAN MAS MATL MAX MCC ME MECH MEG MFR MG MGD MH MI MIN MISC MJ ML MO MON MPH MPT MS MSP MTD MV MW MWL MWP N N NaOCl NE NE NIC NO NOM NPF NPT NPW NRS NTS NW N/A O O2 OC OD ODP OF OH OHV OPP OPT OR OSY O&M P PA PC PCM PE PG PI PL PL PNV POB POJ POL PP PPD PPM PREFAB PRESS PRV PRW PSF PSI PSIA PSIG PT PV PVC PVMT PW PWR Q Q QTY R RAD RAS RC RCB RCP RCPA RD RDR REBAR REF REIN REQ'D RF RJ RM RBPB RPM RAILROAD RIGHT RIVETED RAW WATER RAW WASTEWATER RIGHT-OF-WAY S SA SAN SAN SD SE SECT SEFF SF SHT SIG SIM SL SLV SM SOLN SP SPEC SPRT SQ SS SSE SST ST STA STD STK STL STR STRUCT SURF SURF SVCE SVW SW SWD SWSH SYMB SYMM SW SOUTH SAMPLE LINE SANITARY SCHEDULE STORM DRAIN SOUTHEAST SECTION SECONDARY EFFLUENT SQUARE FOOT OR FEET SHEET(ED)(ING) SIGNAL SIMILAR SLUDGE SLEEVE SHEET METAL SOLUTION SOIL PIPE, SPACE(ING) SPECIFICATION SUPPORT SQUARE SANITARY SEWER SUBSTANDARD EFFLUENT STAINLESS STEEL STREET STATION STANDARD STAKE STEEL STRAIGHT STRUCTURAL SURFACE SURFACE VALVE SERVICE SERVICE WATER SOUTHWEST SIDEWATER DEPTH SURFACE WASH SYMBOL SYMMETRICAL SIDEWALK T TAN TB TBM TB-xx TD TDH TE TEFC TEL TENV THD THK TLM TOB TOC TOS TOT TP TS TV TYP T&B UNDERDRAIN UNDERGROUND ULTIMATE UNION UNLESS OTHERWISE NOTED UNDERGROUND ELECTRIC UNDERGROUND TELEPHONE CABLE UTILITY V V VAC VAR VC VCP VEL VERT VFD VOL W W WAS WCO WF WH WL WM WP WPR WS WSP WT WTP WW WWF WWW WWTP W/ WITH W/O WITHOUT X XFER Y YD YH YR YARD(S) YARD HYDRANT YEAR(S) YR
---	--	---	---	---

PIPING LEGEND

FITTING/ APPURTENANCE	FLANGED				MECHANICAL JOINT				GROOVE JOINT				SOLVENT WELD			
	SINGLE-LINE		DOUBLE-LINE		SINGLE-LINE		DOUBLE-LINE		SINGLE-LINE		DOUBLE-LINE		SINGLE-LINE		DOUBLE-LINE	
	EXISTING	PROPOSED	EXISTING	PROPOSED	EXISTING	PROPOSED	EXISTING	PROPOSED	EXISTING	PROPOSED	EXISTING	PROPOSED	EXISTING	PROPOSED	EXISTING	PROPOSED
BEND																
TEE																
WYE																
REDUCER																
CAP/ BLIND FLANGE					N/A	N/A	N/A	N/A								
PLUG	N/A	N/A	N/A	N/A					N/A	N/A	N/A	N/A	N/A	N/A	N/A	N/A
BUTTERFLY VALVE																
BALL VALVE					N/A	N/A	N/A	N/A								
CHECK VALVE					N/A	N/A	N/A	N/A								
GATE VALVE																
PLUG VALVE																
AUTOMATIC CONTROL VALVE					N/A	N/A	N/A	N/A								
PINCH VALVE					N/A	N/A	N/A	N/A	N/A	N/A	N/A	N/A				

CIVIL LEGEND

	PROPERTY LINE
	RIGHT OF WAY LINE (R-O-W)
	LIMITS OF CONSTRUCTION
	EASEMENT
	PROPOSED CONTOUR MAJOR
	PROPOSED CONTOUR MINOR (LABEL OPTIONAL)
	WATER
	STORM SEWER
	SANITARY SEWER
	SANITARY SEWER (FORCE MAIN)
	GUARD RAIL
	STEEL FENCE
	WOOD FENCE
	VEGETATION
	TOP
	BOTTOM
	WV
	WM
	FH
	SD
	MH-??
	SS
	SV
	CO
	MW-X
	W
	WAS
	WCO
	WF
	WH
	WL
	WM
	WP
	WPR
	WS
	WSP
	WT
	WTP
	WW
	WWF
	WWW
	WWTP
	W/
	W/O
	X
	XFER
	Y
	YD
	YH
	YR
	WATT, WEST
	WASTE ACTIVATED SLUDGE
	WALL CLEAN OUT
	WIDE FLANGE
	WALL HYDRANT
	WATER LINE
	WATER MAIN
	WATER PROOF(ING), WORKING POINT
	WORKING PRESSURE
	WATER SURFACE
	WELDED STEEL PIPE
	WEIGHT
	WATER TREATMENT PLANT
	WASH WATER
	WELDED WIRE FABRIC
	WELDED WIRE MESH
	WASTEWATER TREATMENT PLANT
	WITH
	WITHOUT
	TRANSFER
	YARD(S)
	YARD HYDRANT
	YEAR(S) YR

REFERENCE SYMBOLS

	DENOTES SECTION LETTER IDENTIFICATION
	DENOTES DRAWING NO WHERE SECTION IS LOCATED
	SECTION REFERENCE
	DENOTES SECTION LETTER IDENTIFICATION
	DENOTES DRAWING NO WHERE SECTION IS LOCATED
	SECTION
	SCALE:
	DENOTES DRAWING NO WHERE SECTION IS LOCATED
	SECTION TITLE
	DENOTES DETAIL NUMBER IDENTIFICATION
	DENOTES DRAWING NO WHERE DETAIL IS LOCATED
	DETAIL REFERENCE
	DENOTES DETAIL NUMBER IDENTIFICATION
	DENOTES DRAWING NO WHERE DETAIL IS LOCATED
	DETAIL
	SCALE:
	DENOTES DRAWING NO WHERE DETAIL IS LOCATED
	DETAIL TITLE

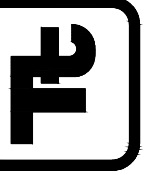
HATCHING LEGEND

	ASPHALT OR CONCRETE SURFACE (SIDEWALK OR ROADWAY)
	ROADWAY/SIDEWALK OPEN CUT RESURFACE
	SODDED OR SEEDDED AND MULCHED AREA OR EXISTING WETLAND
	EARTH
	EXISTING PIPES, STRUCTURES, EQUIPMENT TO BE REMOVED
	CAST-IN-PLACE CONCRETE
	PRECAST CONCRETE
	GROUT
	CONCRETE UNIT MASONRY (PLAN)
	STEEL
	ALUMINUM
	GRATING

MECHANICAL/DRAFTING LEGEND

	VISIBLE LINE
	HIDDEN LINE
	CENTER LINE
	PHANTOM LINE
	MATCHLINE
	BREAK LINE
	DIMENSION LINES AND LEADERS
	NOTE

TETRA TECH



GSWCC LEVEL II
CERT. # 0000073529

BY	CG
CG	
DESCRIPTION	ISSUED FOR CONSTRUCTION
DATE	02/28/20
MARK	0

FAYETTE COUNTY
PATRICIA LN CULVERT REPLACEMENT
LEGEND AND ABBREVIATIONS

Project No.: 200-01297-18002
Designed By: CG
Drawn By: HA
Checked By: DL

G-001

Bar Measures 1 inch

F

E

- D

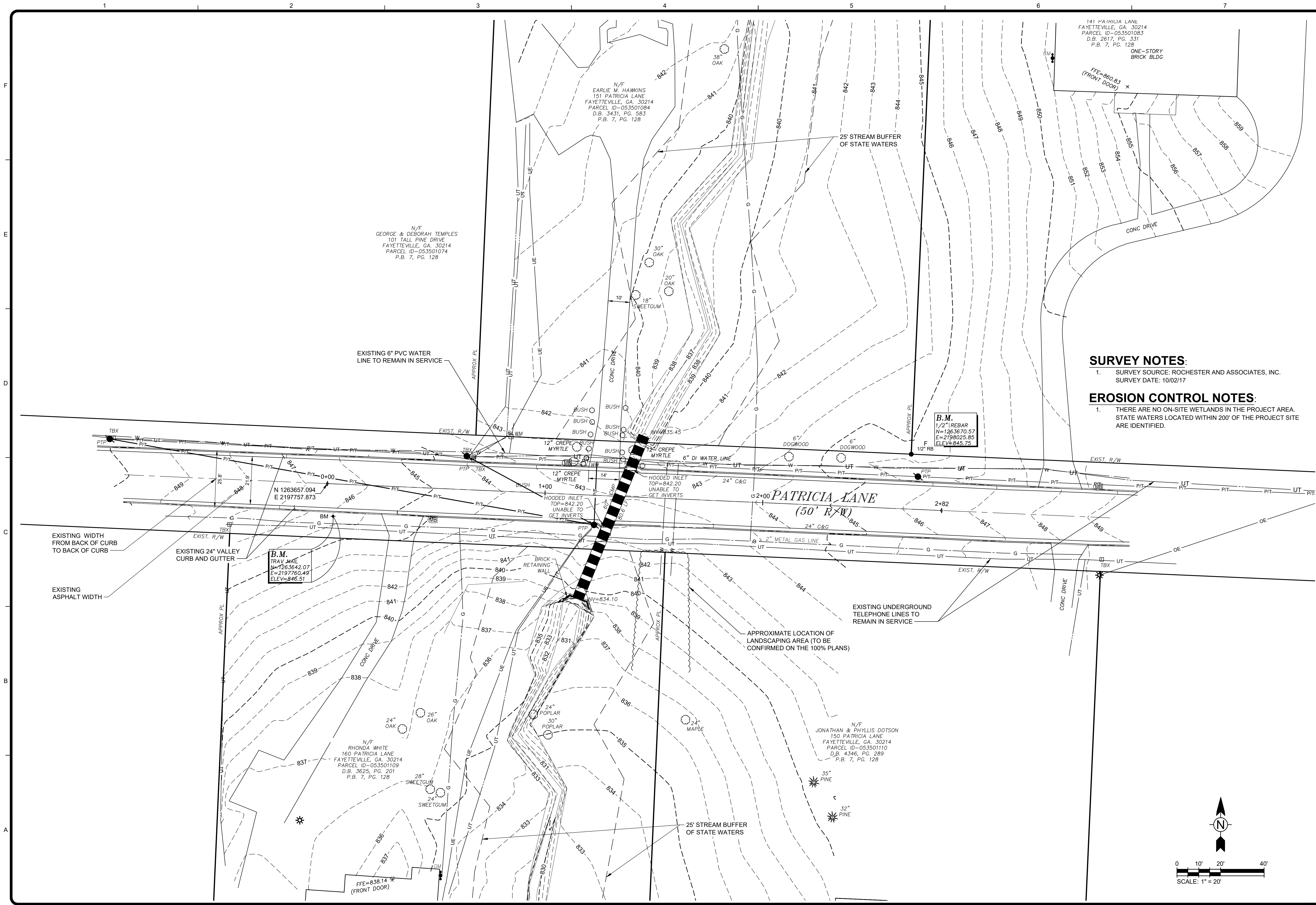
C

- B

A

Bar Measures 1 inch

2/28/2020 1:32:14 PM - O:\PROJECTS\ATLANTA\101297-18002\CADD\SHEETFILES\C-101 EXISTING CONDITIONS.DWG - GULMIRE, CALEB

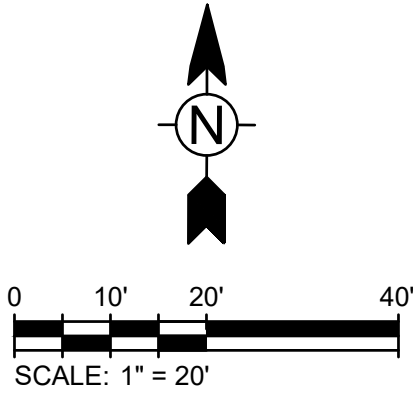


SURVEY NOTES:

1. SURVEY SOURCE: ROCHESTER AND ASSOCIATES, INC.
SURVEY DATE: 10/02/17

EROSION CONTROL NOTES:

1. THERE ARE NO ON-SITE WETLANDS IN THE PROJECT AREA.
STATE WATERS LOCATED WITHIN 200' OF THE PROJECT SITE
ARE IDENTIFIED.



GSWCC LEVEL II
CERT. # 0000073529

MARK	DATE	DESCRIPTION	BY
0	02/28/20	ISSUED FOR CONSTRUCTION	CG

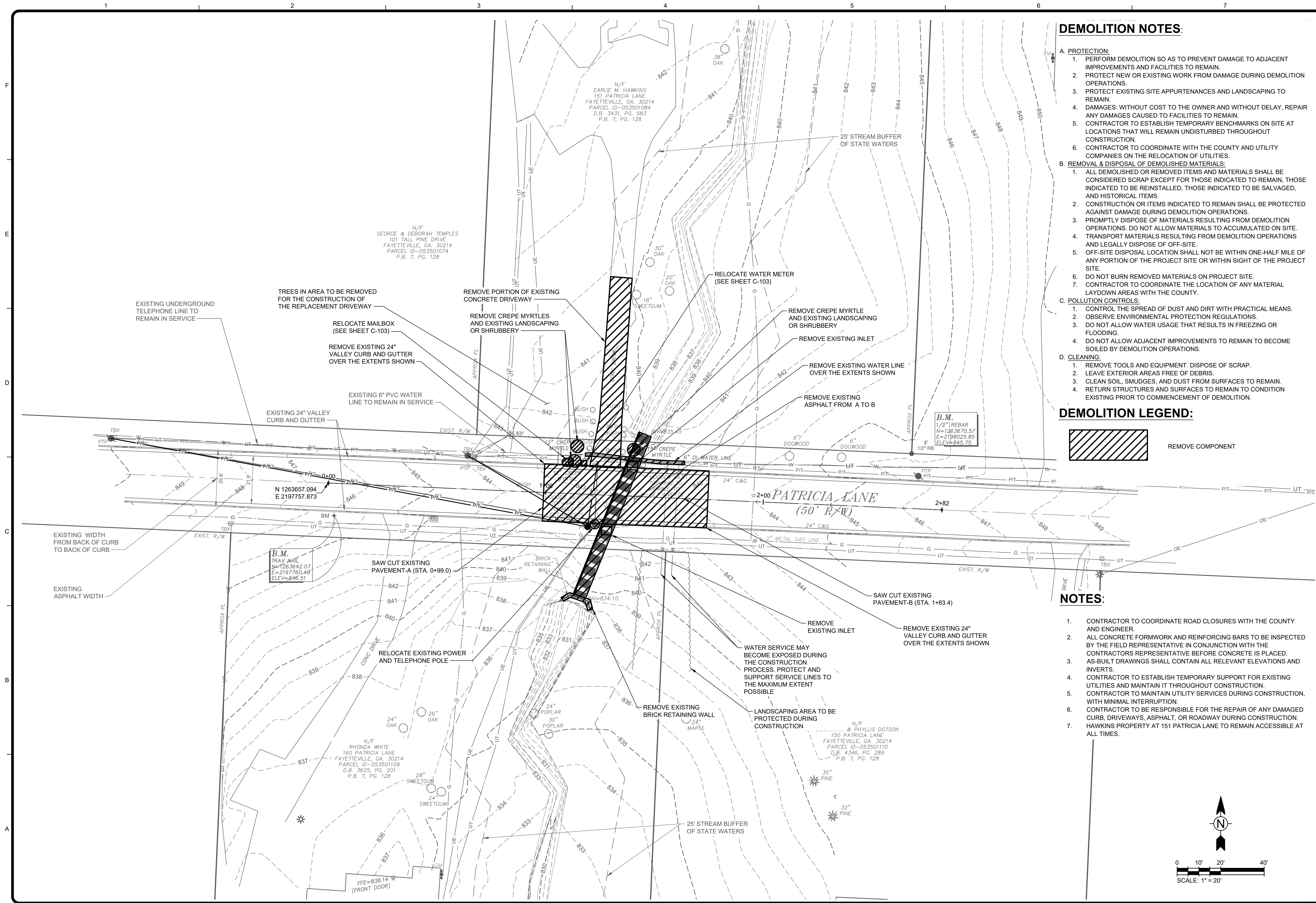
FAYETTE COUNTY
PATRICIA LN CULVERT REPLACEMENT
EXISTING CONDITIONS

Project No.: 200-01297-18002
Designed By: CG
Drawn By: HA
Checked By: DL

C-101

Bar Measures 1 inch

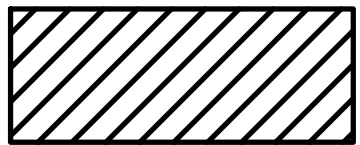
2/28/2020 1:32:29 PM - O:\PROJECTS\ATLANTA\101297-18002\CADD\SHEETFILES\C-102 DEMOLITION PLAN.DWG - GULMIRE CALES



DEMOLITION NOTES:

- A. PROTECTION:
1. PERFORM DEMOLITION SO AS TO PREVENT DAMAGE TO ADJACENT IMPROVEMENTS AND FACILITIES TO REMAIN.
 2. PROTECT NEW OR EXISTING WORK FROM DAMAGE DURING DEMOLITION OPERATIONS.
 3. PROTECT EXISTING SITE APPURTENANCES AND LANDSCAPING TO REMAIN.
 4. DAMAGES: WITHOUT COST TO THE OWNER AND WITHOUT DELAY, REPAIR ANY DAMAGES CAUSED TO FACILITIES TO REMAIN.
 5. CONTRACTOR TO ESTABLISH TEMPORARY BENCHMARKS ON SITE AT LOCATIONS THAT WILL REMAIN UNDISTURBED THROUGHOUT CONSTRUCTION.
 6. CONTRACTOR TO COORDINATE WITH THE COUNTY AND UTILITY COMPANIES ON THE RELOCATION OF UTILITIES.
- B. REMOVAL & DISPOSAL OF DEMOLISHED MATERIALS:
1. ALL DEMOLISHED OR REMOVED ITEMS AND MATERIALS SHALL BE CONSIDERED SCRAP EXCEPT FOR THOSE INDICATED TO REMAIN, THOSE INDICATED TO BE REINSTALLED, THOSE INDICATED TO BE SALVAGED, AND HISTORICAL ITEMS.
 2. CONSTRUCTION OR ITEMS INDICATED TO REMAIN SHALL BE PROTECTED AGAINST DAMAGE DURING DEMOLITION OPERATIONS.
 3. PROMPTLY DISPOSE OF MATERIALS RESULTING FROM DEMOLITION OPERATIONS. DO NOT ALLOW MATERIALS TO ACCUMULATED ON SITE.
 4. TRANSPORT MATERIALS RESULTING FROM DEMOLITION OPERATIONS AND LEGALLY DISPOSE OF OFF-SITE.
 5. OFF-SITE DISPOSAL LOCATION SHALL NOT BE WITHIN ONE-HALF MILE OF ANY PORTION OF THE PROJECT SITE OR WITHIN SIGHT OF THE PROJECT SITE.
 6. DO NOT BURN REMOVED MATERIALS ON PROJECT SITE.
 7. CONTRACTOR TO COORDINATE THE LOCATION OF ANY MATERIAL LAYDOWN AREAS WITH THE COUNTY.
- C. POLLUTION CONTROLS:
1. CONTROL THE SPREAD OF DUST AND DIRT WITH PRACTICAL MEANS.
 2. OBSERVE ENVIRONMENTAL PROTECTION REGULATIONS.
 3. DO NOT ALLOW WATER USAGE THAT RESULTS IN FREEZING OR FLOODING.
 4. DO NOT ALLOW ADJACENT IMPROVEMENTS TO REMAIN TO BECOME SOILED BY DEMOLITION OPERATIONS.
- D. CLEANING:
1. REMOVE TOOLS AND EQUIPMENT. DISPOSE OF SCRAP.
 2. LEAVE EXTERIOR AREAS FREE OF DEBRIS.
 3. CLEAN SOIL, SMUDGES, AND DUST FROM SURFACES TO REMAIN.
 4. RETURN STRUCTURES AND SURFACES TO REMAIN TO CONDITION EXISTING PRIOR TO COMMENCEMENT OF DEMOLITION.

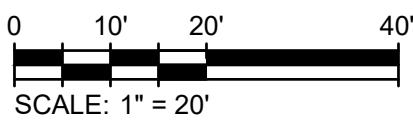
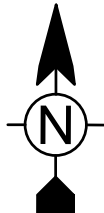
DEMOLITION LEGEND:



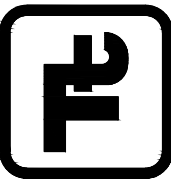
REMOVE COMPONENT

NOTES:

1. CONTRACTOR TO COORDINATE ROAD CLOSURES WITH THE COUNTY AND ENGINEER.
2. ALL CONCRETE FORMWORK AND REINFORCING BARS TO BE INSPECTED BY THE FIELD REPRESENTATIVE IN CONJUNCTION WITH THE CONTRACTORS REPRESENTATIVE BEFORE CONCRETE IS PLACED.
3. AS-BUILT DRAWINGS SHALL CONTAIN ALL RELEVANT ELEVATIONS AND INVERTS.
4. CONTRACTOR TO ESTABLISH TEMPORARY SUPPORT FOR EXISTING UTILITIES AND MAINTAIN IT THROUGHOUT CONSTRUCTION.
5. CONTRACTOR TO MAINTAIN UTILITY SERVICES DURING CONSTRUCTION, WITH MINIMAL INTERRUPTION.
6. CONTRACTOR TO BE RESPONSIBLE FOR THE REPAIR OF ANY DAMAGED CURB, DRIVEWAYS, ASPHALT, OR ROADWAY DURING CONSTRUCTION. HAWKINS PROPERTY AT 151 PATRICIA LANE TO REMAIN ACCESSIBLE AT ALL TIMES.
- 7.



TETRA TECH



GSWCC LEVEL II
CERT. # 0000073529

MARK	DATE	DESCRIPTION	BY
0	02/28/20	ISSUED FOR CONSTRUCTION	CG

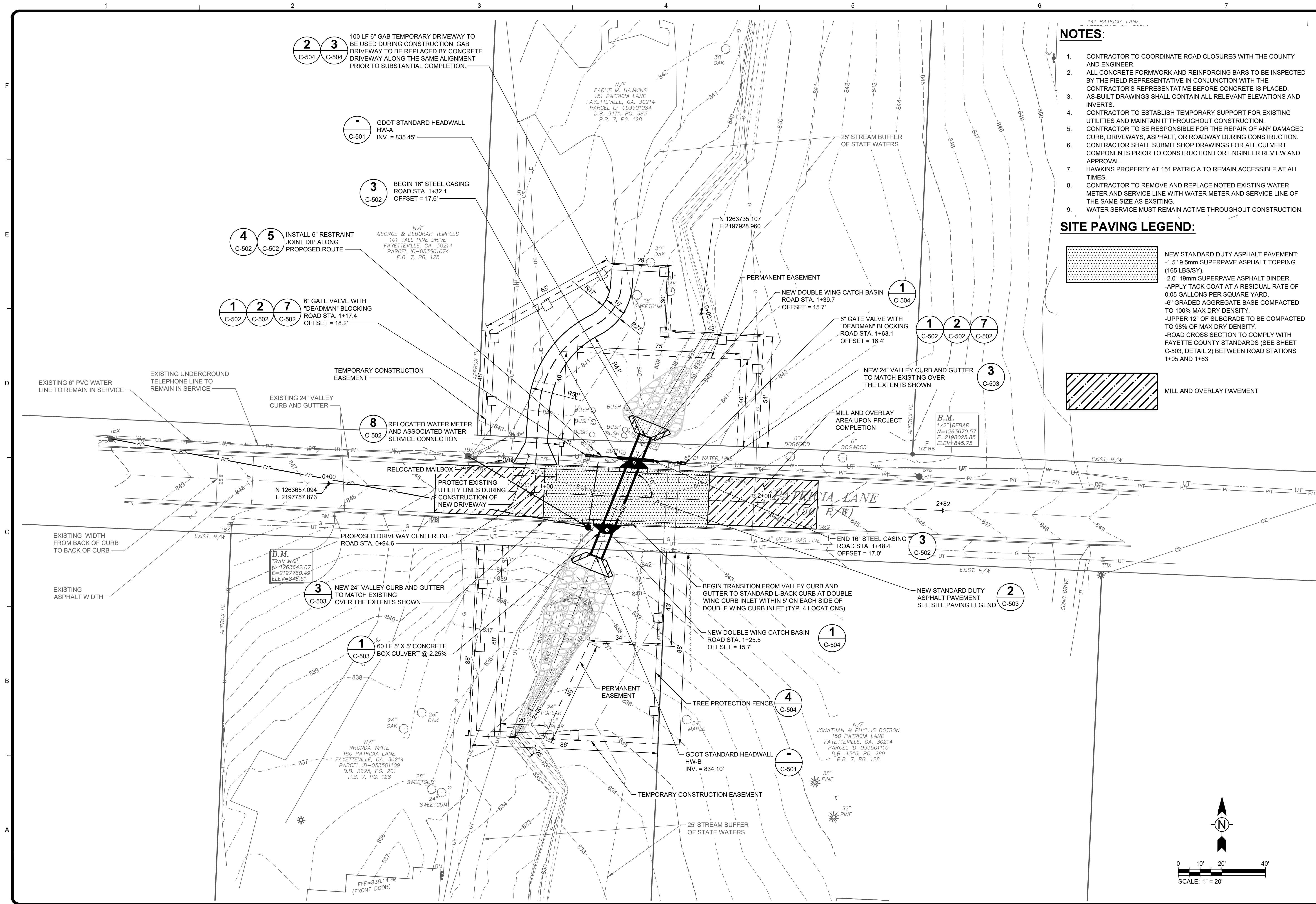
FAYETTE COUNTY	
PATRICIA LN CULVERT REPLACEMENT	
DEMOLITION PLAN	

Project No.: 200-01297-18002
Designed By: CG
Drawn By: HA
Checked By: DL

C-102

Bar Measures 1 inch

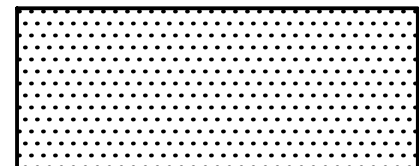
2/28/2020 1:32:47 PM - O:\PROJECTS\ATLANTA\101297\200-01297-18002\CADD\SHEETFILES\C-103 SITE PLAN.DWG - GULMIRE, CALEB



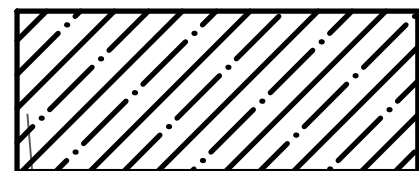
NOTES:

- CONTRACTOR TO COORDINATE ROAD CLOSURES WITH THE COUNTY AND ENGINEER.
- ALL CONCRETE FORMWORK AND REINFORCING BARS TO BE INSPECTED BY THE FIELD REPRESENTATIVE IN CONJUNCTION WITH THE CONTRACTOR'S REPRESENTATIVE BEFORE CONCRETE IS PLACED. AS-BUILT DRAWINGS SHALL CONTAIN ALL RELEVANT ELEVATIONS AND INVERTS.
- CONTRACTOR TO ESTABLISH TEMPORARY SUPPORT FOR EXISTING UTILITIES AND MAINTAIN IT THROUGHOUT CONSTRUCTION.
- CONTRACTOR TO BE RESPONSIBLE FOR THE REPAIR OF ANY DAMAGED CURB, DRIVEWAYS, ASPHALT, OR ROADWAY DURING CONSTRUCTION. CONTRACTOR SHALL SUBMIT SHOP DRAWINGS FOR ALL CULVERT COMPONENTS PRIOR TO CONSTRUCTION FOR ENGINEER REVIEW AND APPROVAL.
- HAWKINS PROPERTY AT 151 PATRICIA TO REMAIN ACCESSIBLE AT ALL TIMES.
- CONTRACTOR TO REMOVE AND REPLACE NOTED EXISTING WATER METER AND SERVICE LINE WITH WATER METER AND SERVICE LINE OF THE SAME SIZE AS EXISTING.
- WATER SERVICE MUST REMAIN ACTIVE THROUGHOUT CONSTRUCTION.

SITE PAVING LEGEND:



NEW STANDARD DUTY ASPHALT PAVEMENT:
-1.5" 9.5mm SUPERPAVE ASPHALT TOPPING (165 LBS/SY).
-2.0" 19mm SUPERPAVE ASPHALT BINDER.
-APPLY TACK COAT AT A RESIDUAL RATE OF 0.05 GALLONS PER SQUARE YARD.
-6" GRADED AGGREGATE BASE COMPACTED TO 100% MAX DRY DENSITY.
-UPPER 12" OF SUBGRADE TO BE COMPACTED TO 98% OF MAX DRY DENSITY.
-ROAD CROSS SECTION TO COMPLY WITH FAYETTE COUNTY STANDARDS (SEE SHEET C-503, DETAIL 2) BETWEEN ROAD STATIONS 1+05 AND 1+63



MILL AND OVERLAY PAVEMENT

TETRA TECH



GSWCC LEVEL II
CERT. # 0000073529

MARK	DATE	DESCRIPTION	BY
0	02/28/20	ISSUED FOR CONSTRUCTION	CG

FAYETTE COUNTY

PATRICIA LN CULVERT REPLACEMENT

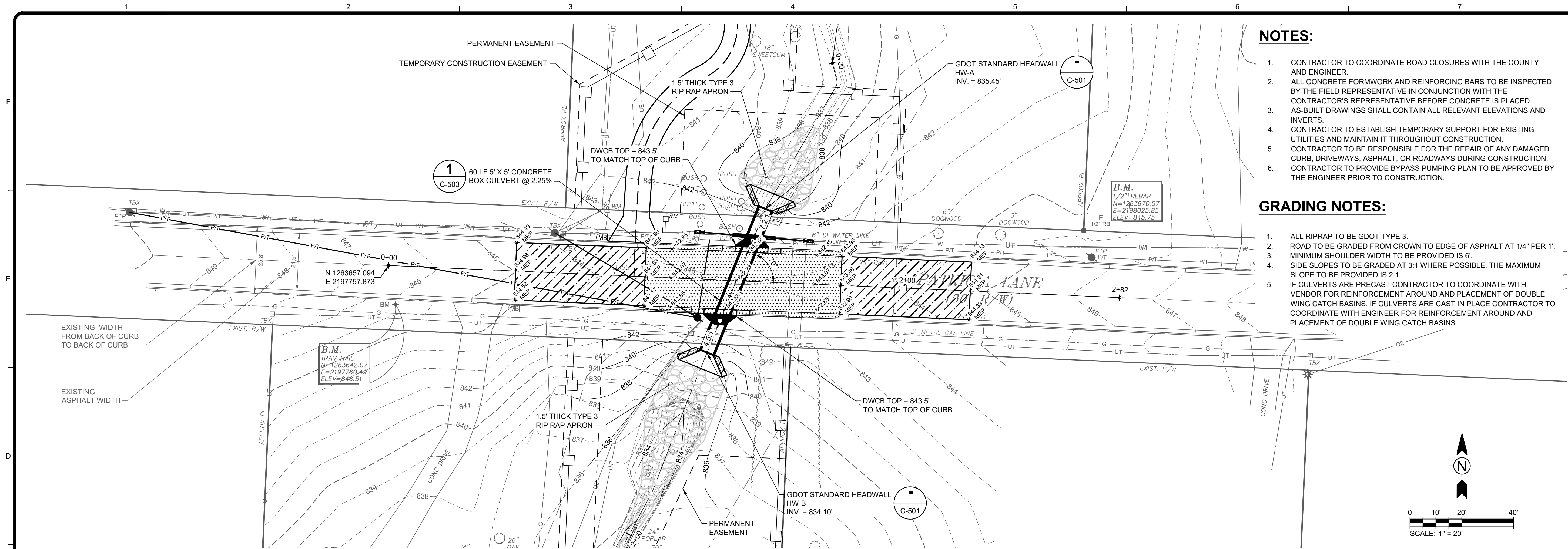
SITE PLAN

Project No.: 200-01297-18002
Designed By: CG
Drawn By: HA
Checked By: DL

C-103

Bar Measures 1 inch

2/28/2020 1:32:53 PM - O:\PROJECTS\ATLANTA\18002\CADD\SHEETFILES\C-104 GRADING AND DRAINAGE PLAN.DWG - GULMIRE CALEB

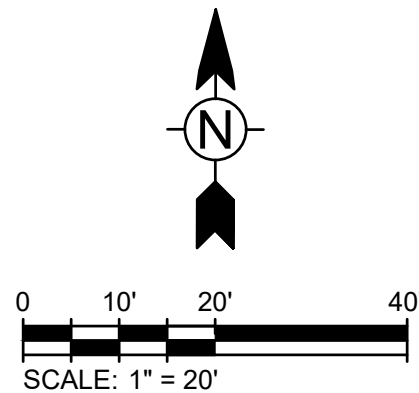


NOTES:

1. CONTRACTOR TO COORDINATE ROAD CLOSURES WITH THE COUNTY AND ENGINEER.
2. ALL CONCRETE FORMWORK AND REINFORCING BARS TO BE INSPECTED BY THE FIELD REPRESENTATIVE IN CONJUNCTION WITH THE CONTRACTOR'S REPRESENTATIVE BEFORE CONCRETE IS PLACED.
3. AS-BUILT DRAWINGS SHALL CONTAIN ALL RELEVANT ELEVATIONS AND INVERTS.
4. CONTRACTOR TO ESTABLISH TEMPORARY SUPPORT FOR EXISTING UTILITIES AND MAINTAIN IT THROUGHOUT CONSTRUCTION.
5. CONTRACTOR TO BE RESPONSIBLE FOR THE REPAIR OF ANY DAMAGED CURB, DRIVEWAYS, ASPHALT, OR ROADWAYS DURING CONSTRUCTION.
6. CONTRACTOR TO PROVIDE BYPASS PUMPING PLAN TO BE APPROVED BY THE ENGINEER PRIOR TO CONSTRUCTION.

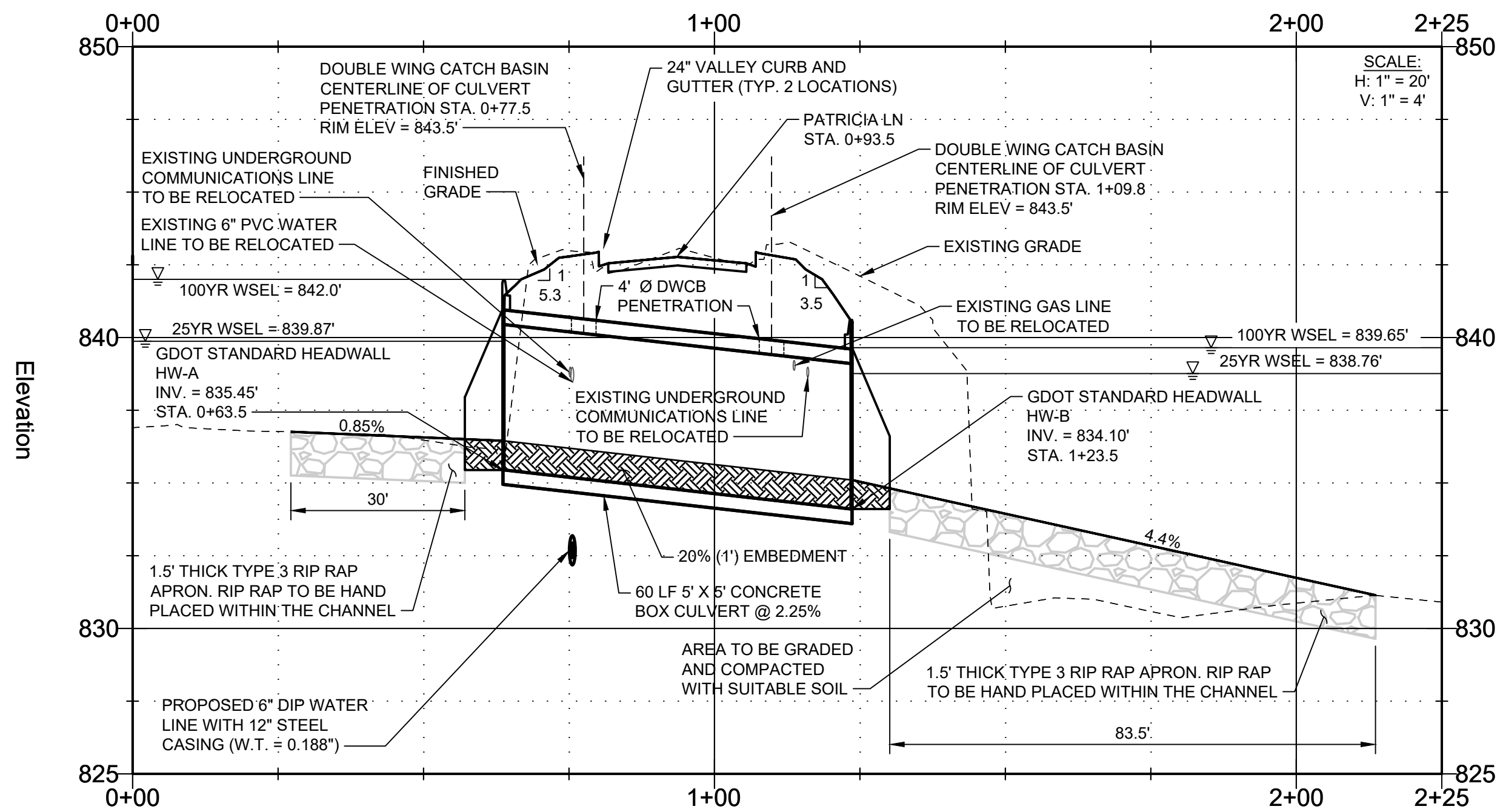
GRADING NOTES:

1. ALL RIPRAP TO BE GDOT TYPE 3.
2. ROAD TO BE GRADED FROM CROWN TO EDGE OF ASPHALT AT 1/4" PER 1'.
3. MINIMUM SHOULDER WIDTH TO BE PROVIDED IS 6'.
4. SIDE SLOPES TO BE GRADED AT 3:1 WHERE POSSIBLE. THE MAXIMUM SLOPE TO BE PROVIDED IS 2:1.
5. IF CULVERTS ARE PRECAST CONTRACTOR TO COORDINATE WITH VENDOR FOR REINFORCEMENT AROUND AND PLACEMENT OF DOUBLE WING CATCH BASINS. IF CULVERTS ARE CAST IN PLACE CONTRACTOR TO COORDINATE WITH ENGINEER FOR REINFORCEMENT AROUND AND PLACEMENT OF DOUBLE WING CATCH BASINS.

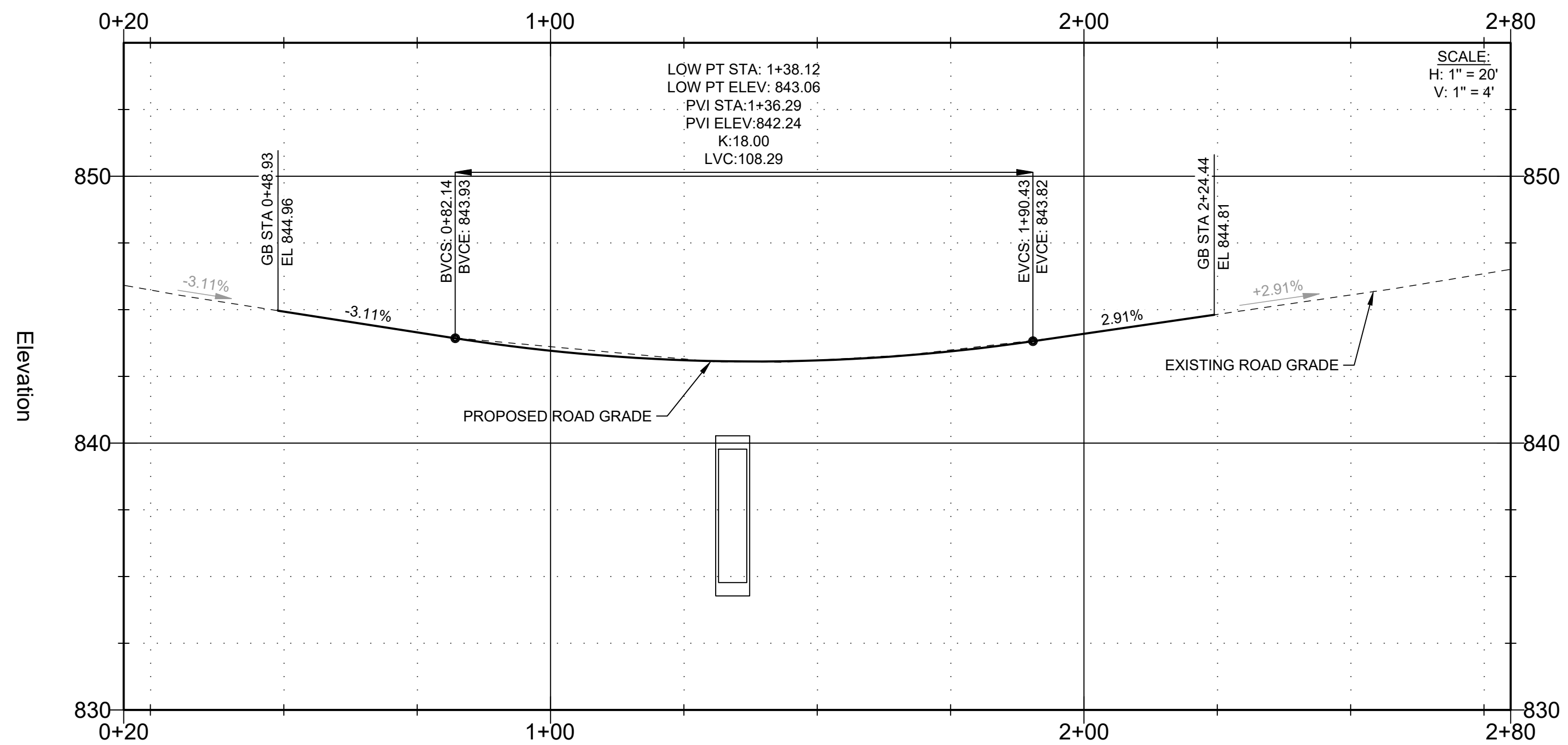


FLOW SUMMARY TABLE			
STORM FREQUENCY	FLOW (CFS)	OUTLET VELOCITY (FPS)	DOWNSTREAM VELOCITY (FPS)
25-YEAR	106	5.8	6.1
50-YEAR	135	6.8	6.5
100-YEAR	169	8.4	6.8

DRAINAGE AREA = 53.7 ACRES
STREAM SLOPE = 0.23%



PATRICIA LANE TYPICAL CULVERT PROFILE



PATRICIA LANE ROAD PROFILE

TETRA TECH



GSWCC LEVEL II
CERT. # 0000073529

MARK	DATE	DESCRIPTION	BY
0	02/28/20	ISSUED FOR CONSTRUCTION	CG

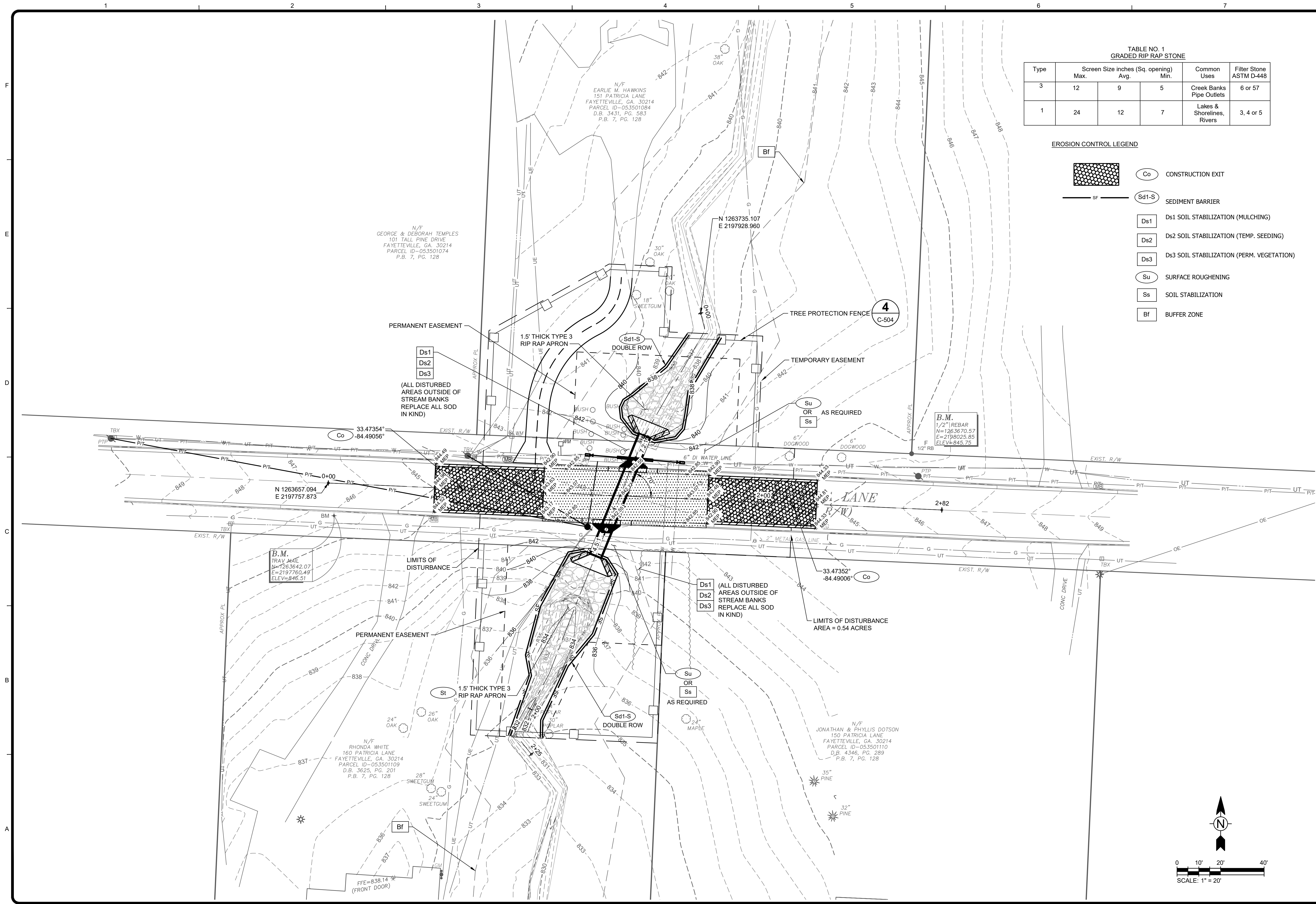
FAYETTE COUNTY
PATRICIA LN CULVERT REPLACEMENT
GRADING AND DRAINAGE
PLAN

Project No.: 200-01297-18002
Designed By: CG
Drawn By: HA
Checked By: DL

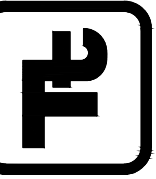
C-104

Bar Measures 1 inch

2/28/2020 1:33:03 PM - O:\PROJECTS\ATLANTA\ER01297\200-01297-18002\CADD\SHEETFILES\C-105 EROSION CONTROL PLAN.DWG - GULMIRE, CALEB



TETRA TECH



GSWCC LEVEL II
CERT. # 0000073529

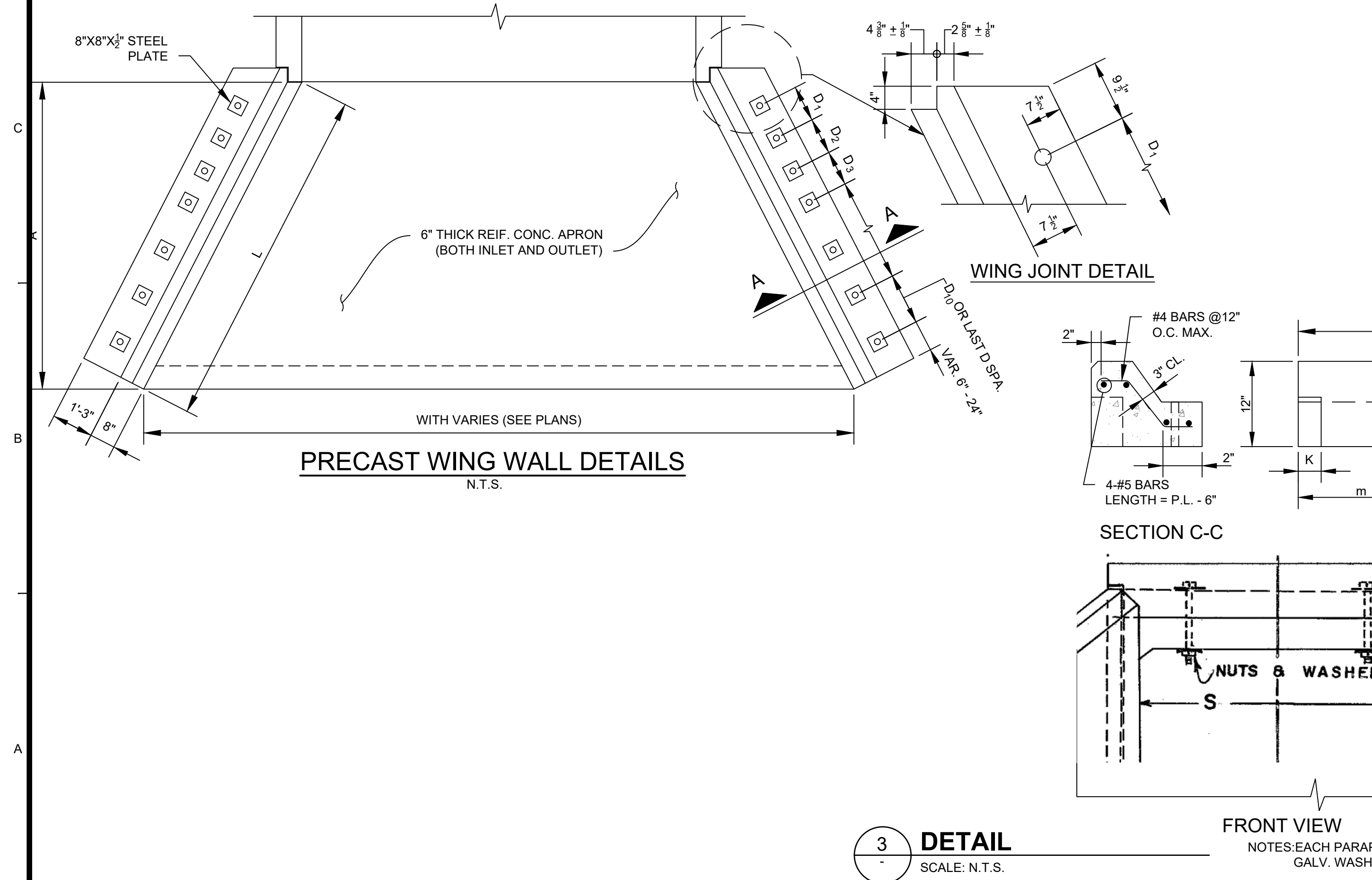
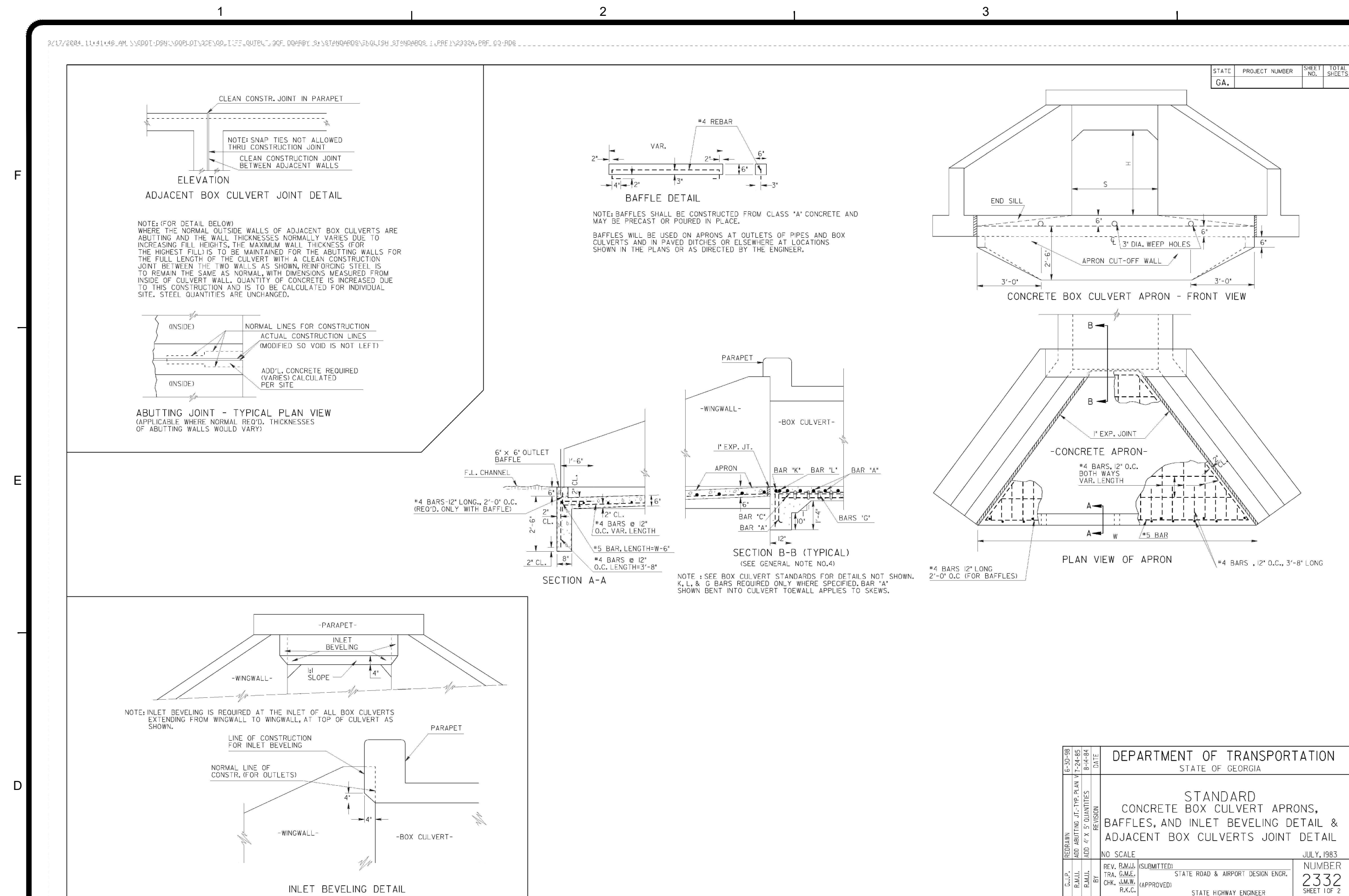
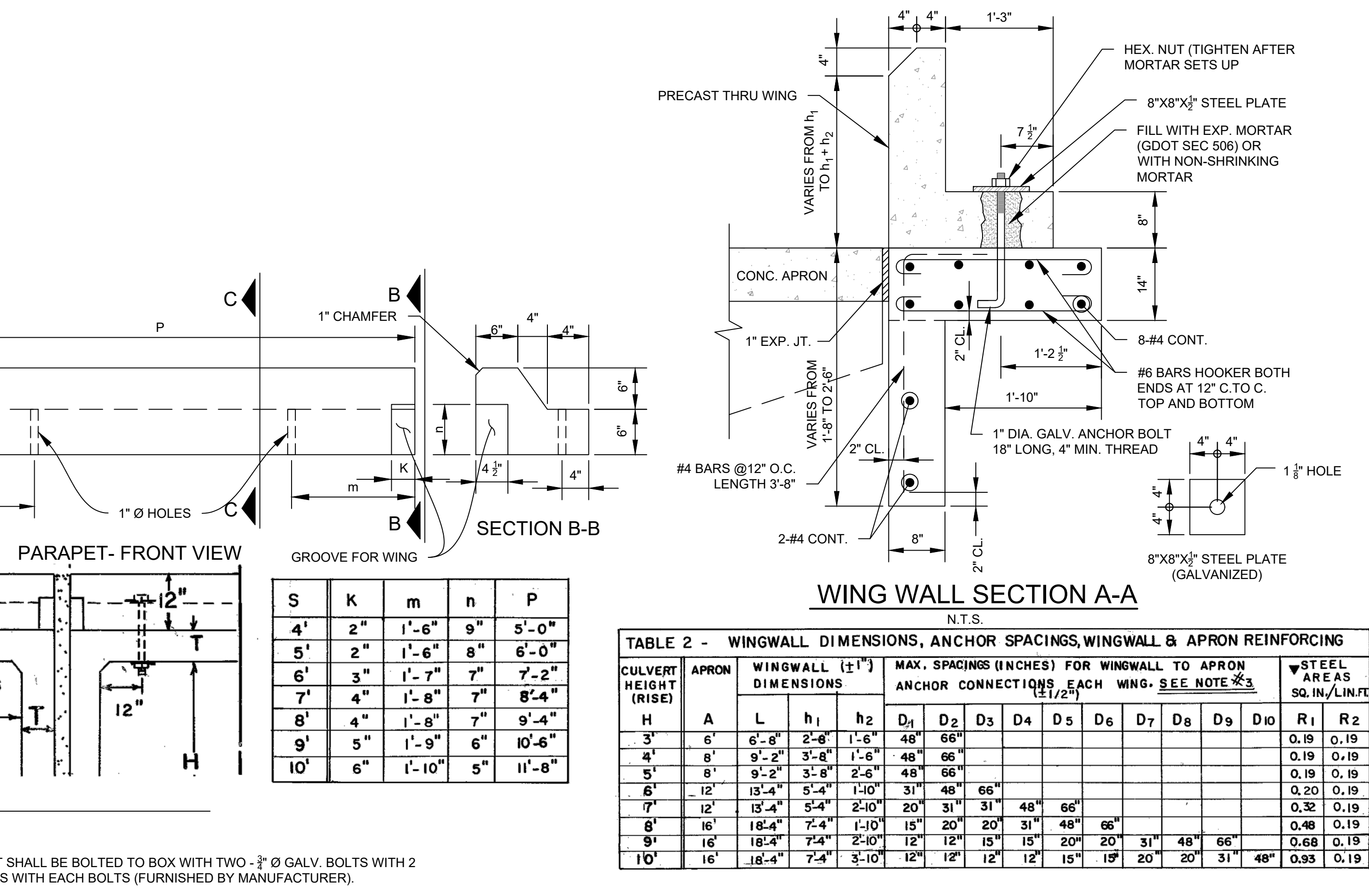
MARK	DATE	DESCRIPTION	BY
0	02/28/20	ISSUED FOR CONSTRUCTION	CG

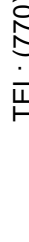

FAYETTE COUNTY
PATRICIA LN CULVERT REPLACEMENT
EROSION CONTROL PLAN

Project No.: 200-01297-18002
Designed By: CG
Drawn By: HA
Checked By: DL

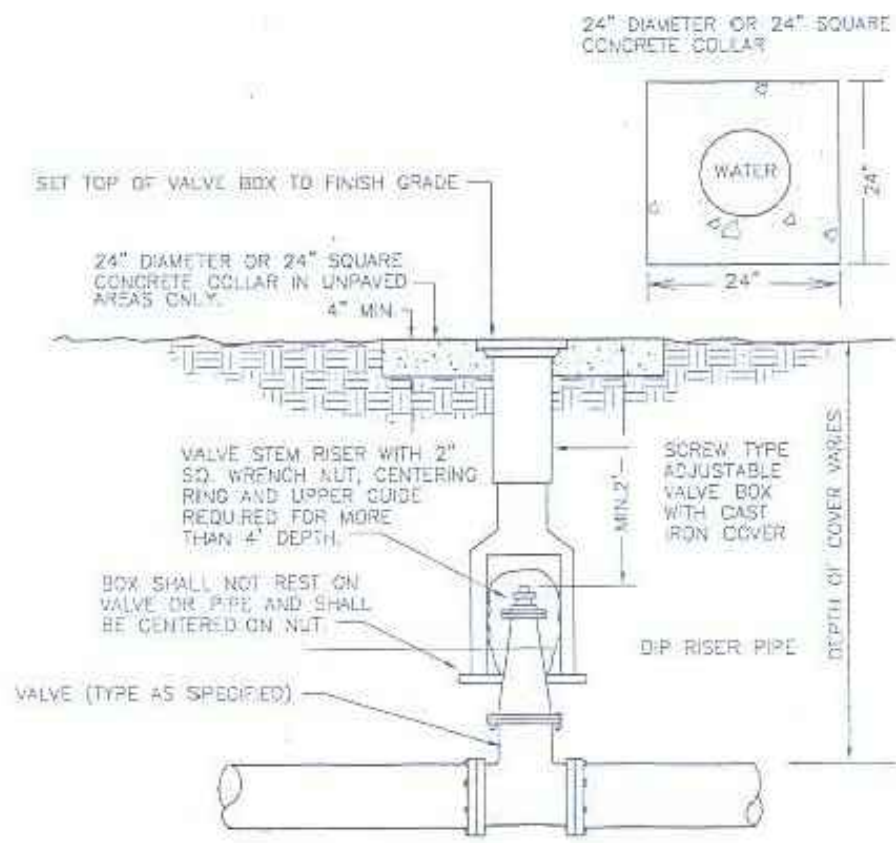
C-105

Bar Measures 1 inch

[illegible]

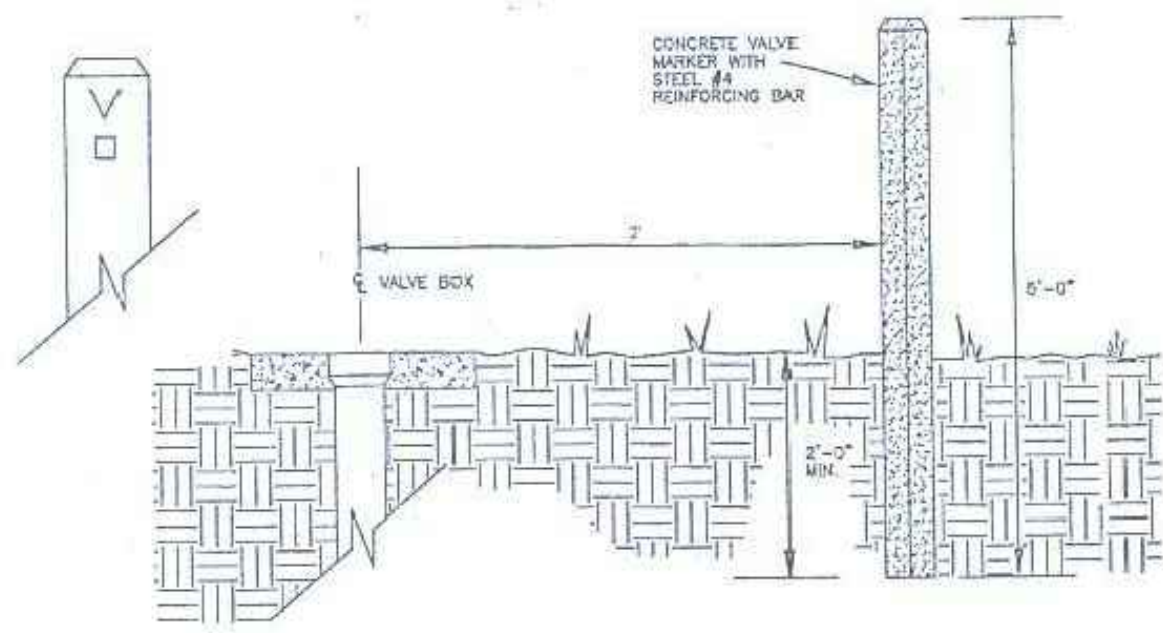
FAYETTE COUNTY		TETRA TECH	 www.tetratech.com
PATRICIA LN CULVERT REPLACEMENT		1899 POWERS FERRY ROAD SE SUITE 400 ATLANTA, GEORGIA 30339 TEL: (770) 850-0949 FAX: (770) 850-0950	
CONSTRUCTION DETAILS			
Project No.: 200-01297-18002	Designed By:	GSWCC LEVEL II CERT. # 0000073529	
Drawn By:	HA		
Checked By:	DL		
C-501	Bar Measures 1 inch		

2/28/2020 1:33:37 PM - O:\PROJECTS\ATLANTA\101297-18002\CADD\SHEETFILES\C-502 CONSTRUCTION DETAIL.S.DWG - GULMIRE, CALEB



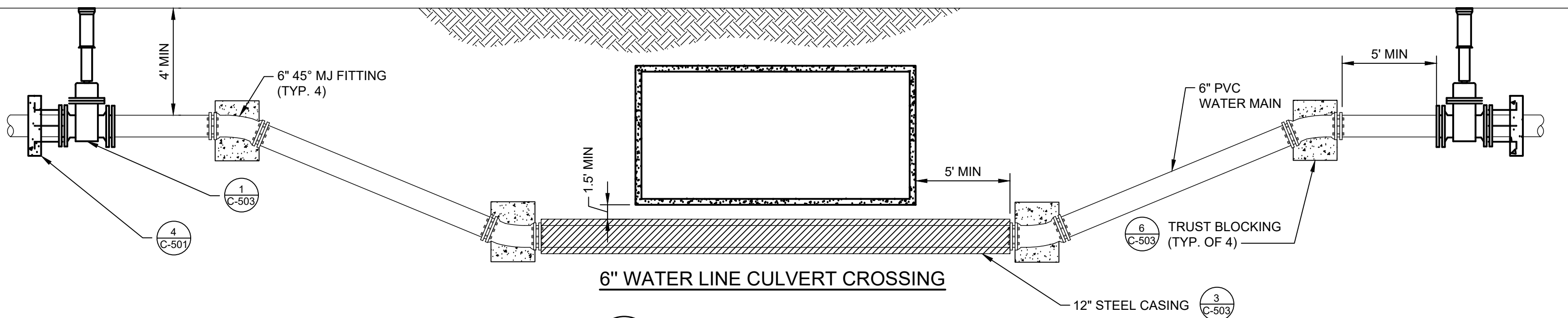
VALVE & VALVE BOX DETAIL

1
DETAIL
SCALE: N.T.S.

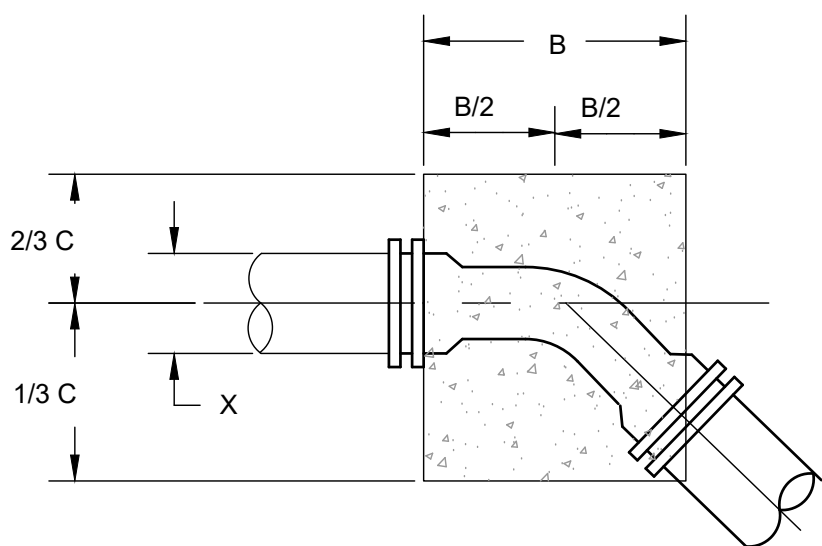


VALVE MARKER DETAIL

2
DETAIL
SCALE: N.T.S.



5
DETAIL
SCALE: N.T.S.



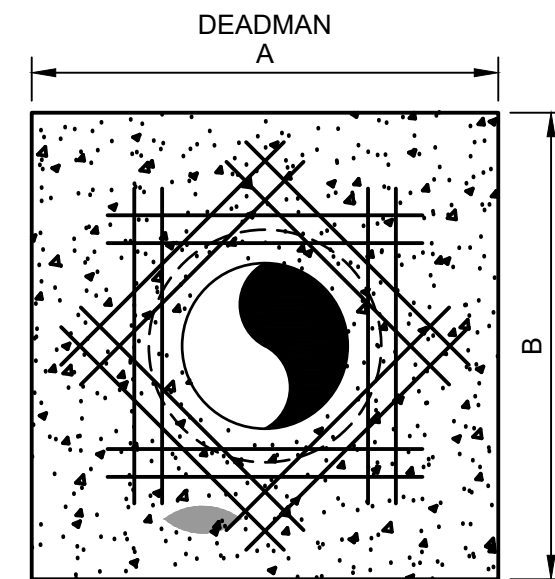
THRUST BLOCKING
N.T.S.

6
DETAIL
SCALE: N.T.S.

Line Pressure = 200 PSI Soil Pressure = 2000 PSF				
Pipe Size X	A	B	C	D
45 DEGREE BEND				
24"	2'-4"	5'-6"	5'-0"	3'-9"
20"	1'-11"	4'-6"	4'-0"	3'-0"
18"	1'-9"	4'-0"	4'-0"	2'-9"
16"	1'-7"	3'-6"	3'-6"	2'-3"
14"	1'-3"	3'-0"	3'-0"	2'-0"
12"	1'-3"	3'-0"	2'-6"	2'-0"
10"	1'-3"	2'-6"	2'-0"	1'-9"
8"	1'-0"	1'-9"	1'-9"	1'-3"
6"	0'-11"	1'-6"	1'-6"	1'-0"
4"	0'-9"	1'-0"	1'-0"	1'-0"

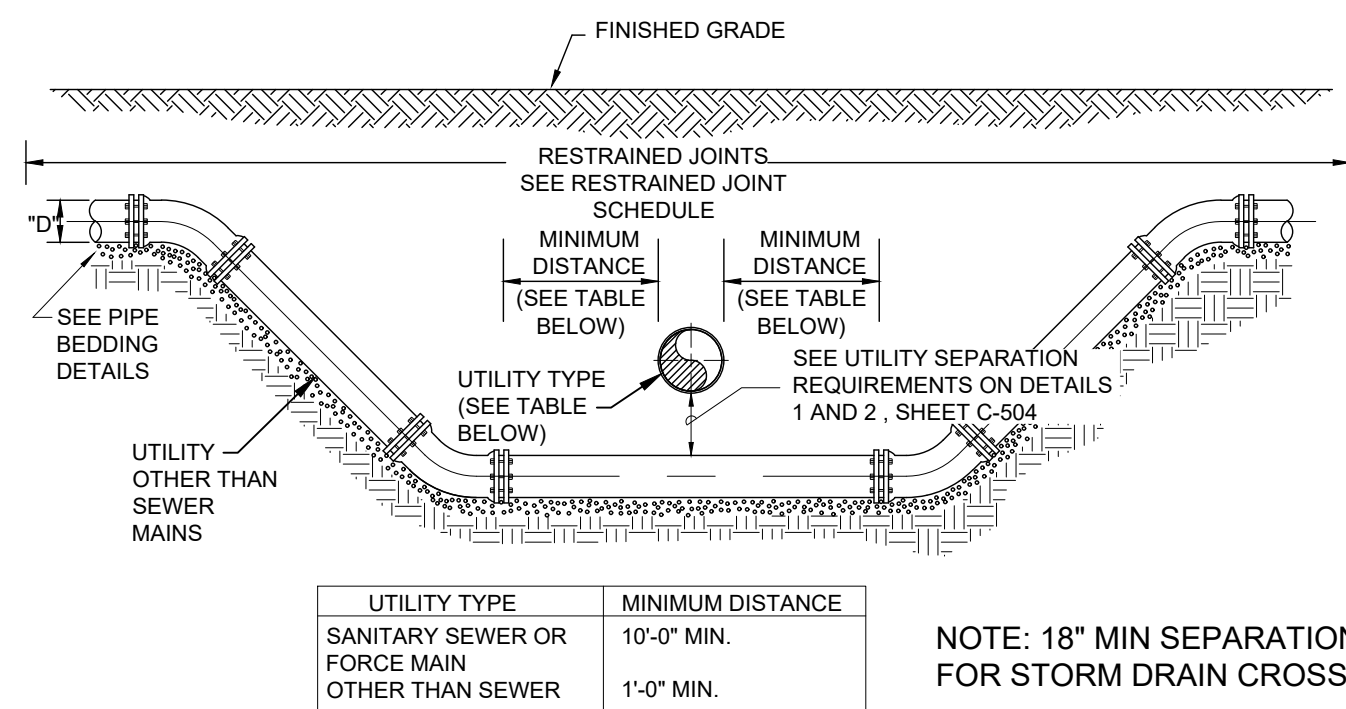
NOTE: THESE THRUST BLOCKING DETAILS SHALL BE USED IN CONJUNCTION WITH RESTRAINT JOINT PIPE.

- NOTES:
- DEADMAN SHALL BE CLASS "C" CONCRETE; "SACKCRETE" WILL NOT BE ALLOWED.
 - THE UTILITY LINE MUST BE LOWERED IN ORDER TO HAVE FOUR FEET (4') OF COVER AT THE BEND, TEE, REDUCER, OR PLUG AT ALL LOCATIONS WHERE THESE FITTINGS MAY BE UTILIZED.
 - FOR SOIL CONDITIONS LESS THAN 2000 P.S.F. BEARING PRESSURE OR PIPE PRESSURE OVER 150 P.S.I. SPECIAL THRUST BLOCKS/RESTRAINT MUST BE COMPUTED AND APPROVED.
 - CONCRETE SHALL BE POURED AGAINST UNDISTURBED SOIL. DISTURBED SOIL TO BE COMPACTED TO 95% OPTIMUM MOISTURE CONTENT.
 - MAINTAIN 2" CLEARANCE BETWEEN PIPE WALL AND REBAR.



7
DETAIL
SCALE: N.T.S.

LINE PRESSURE = 150 PSI SOIL PRESSURE = 2000 PSF		
PIPE SIZE X	A	B
6"	2'-0"	2'-0"
8"	2'-6"	2'-6"
10"	3'-6"	3'-6"
12"	4'-0"	4'-0"
14"	4'-6"	4'-6"
16"	5'-0"	5'-0"
18"	6'-0"	6'-0"
20"	6'-6"	6'-6"
24"	7'-6"	7'-6"



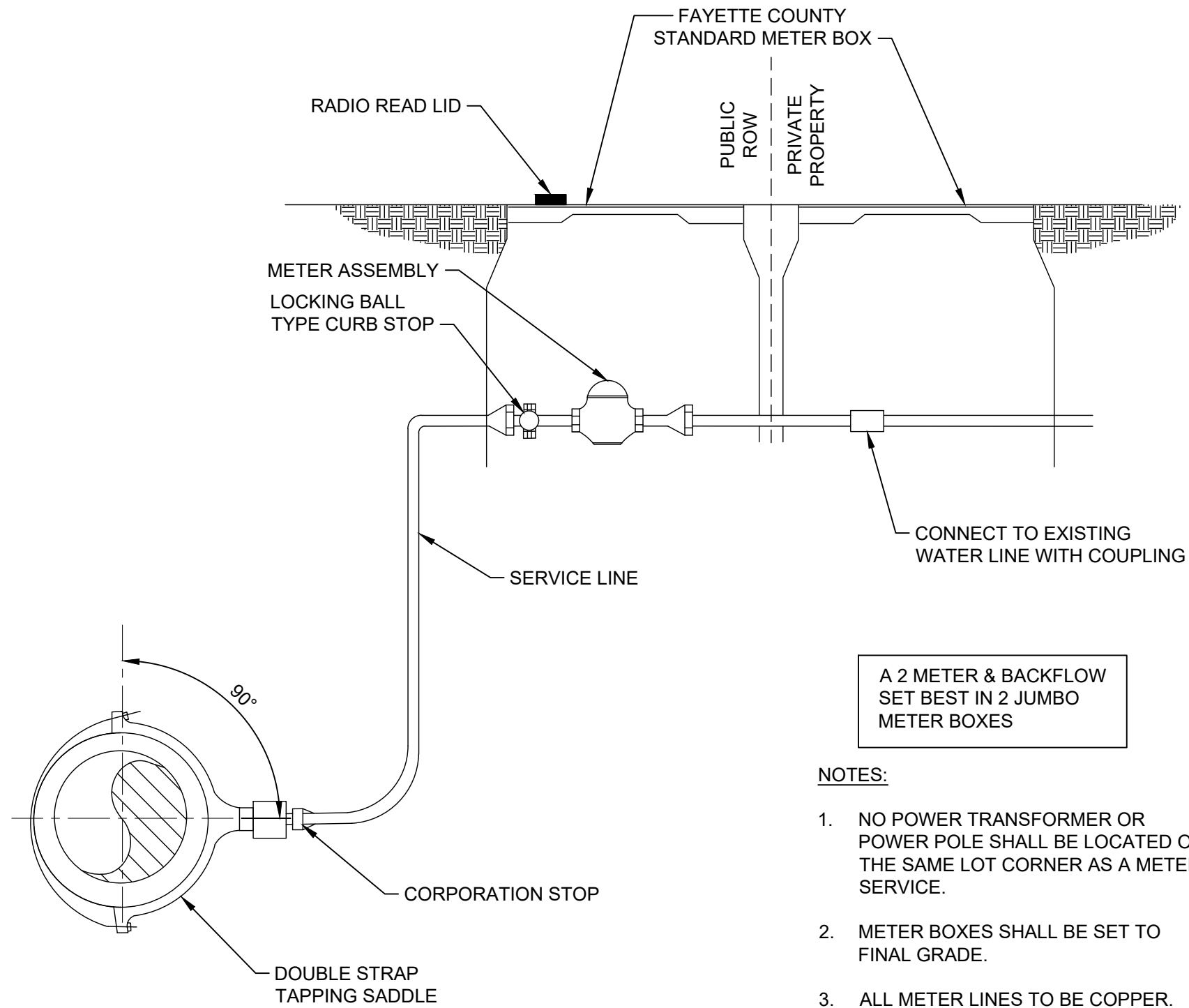
RESTRAINED JOINT UTILITY CROSSING
FOR UTILITIES OTHER THAN SEWER MAINS

RESTRAINED LENGTH EACH SIDE OF RESTRAINED FITTING (FEET)										RESTRAINED LENGTH FOR REDUCERS										
PIPE DIA (Inches)	DIP				PVC															
	90°	45°	22-1/2°	11-1/4°	90°	45°	22-1/2°	11-1/4°	3	4	6	8	10	12	16	20	24	30	36	
4	35	15	10	5	55	25	15	10	40	-	-	-	-	-	-	-	-	-	PVC	
6	55	25	10	5	80	35	20	10	50	45	-	-	-	-	-	-	-	-	PVC	
8	65	30	15	10	90	40	20	10	75	70	40	-	-	-	-	-	-	-	PVC	
10	80	35	20	10	110	50	25	15	95	90	70	40	-	-	-	-	-	-	PVC	
12	95	40	20	10	130	55	30	15	120	115	100	75	40	-	-	-	-	-	PVC	
16	120	50	25	15	165	70	35	20	160	155	140	125	100	70	-	-	-	-	PVC	
20	150	65	30	15	200	85	40	20	200	195	185	170	150	130	75	-	-	-	PVC	
24	160	70	35	20	210	90	45	25	180	155	150	140	135	120	90	50	-	-	DIP	
30	190	80	40	20	250	105	50	25	195	190	185	180	170	160	120	105	70	-	DIP	
36	220	95	45	25	-	-	-	-	225	220	215	210	205	195	180	150	125	70	-	DIP
42	245	105	50	25	-	-	-	-	245	240	235	230	225	220	205	180	155	105	50	DIP
48	260	120	60	30	-	-	-	-	255	250	245	240	235	230	215	195	175	125	70	DIP

RESTRAINED LENGTHS FOR DEAD ENDS, BRANCHES AND HOPE TO PVC TRANSITIONS SHALL BE THE SAME AS FOR 90° BENDS. IN-LINE VALVES SHALL BE RESTRAINED 20' EACH SIDE OF THE VALVE. (IF A JOINT FALLS AT THE MAXIMUM DISTANCE, IT SHALL BE RESTRAINED). TABLE BASED ON IRON FITTINGS. TEST PRESSURE 150 PSI.

RESTRAINED JOINT SCHEDULE

4
DETAIL
SCALE: N.T.S.



NOTES:

- NO POWER TRANSFORMER OR POWER POLE SHALL BE LOCATED ON THE SAME LOT CORNER AS A METER SERVICE.
- METER BOXES SHALL BE SET TO FINAL GRADE.
- ALL METER LINES TO BE COPPER.
- CONTRACTOR TO FIELD VERIFY SIZE AND MATERIAL AND SUBMIT ALL MATERIALS FOR REVIEW IN SHOP DRAWINGS.
- CONTRACTOR TO FIELD VERIFY LENGTH OG PIPE NEEDED TO REACH EXISTING SERVICE LINE.

WATER METER INSTALLATION

8
DETAIL
SCALE: N.T.S.

TETRA TECH



GSWCC LEVEL II
CERT. # 0000073529

MARK	DATE	DESCRIPTION	BY
0	02/28/20	ISSUED FOR CONSTRUCTION	CG

FAYETTE COUNTY
PATRICIA LN CULVERT REPLACEMENT

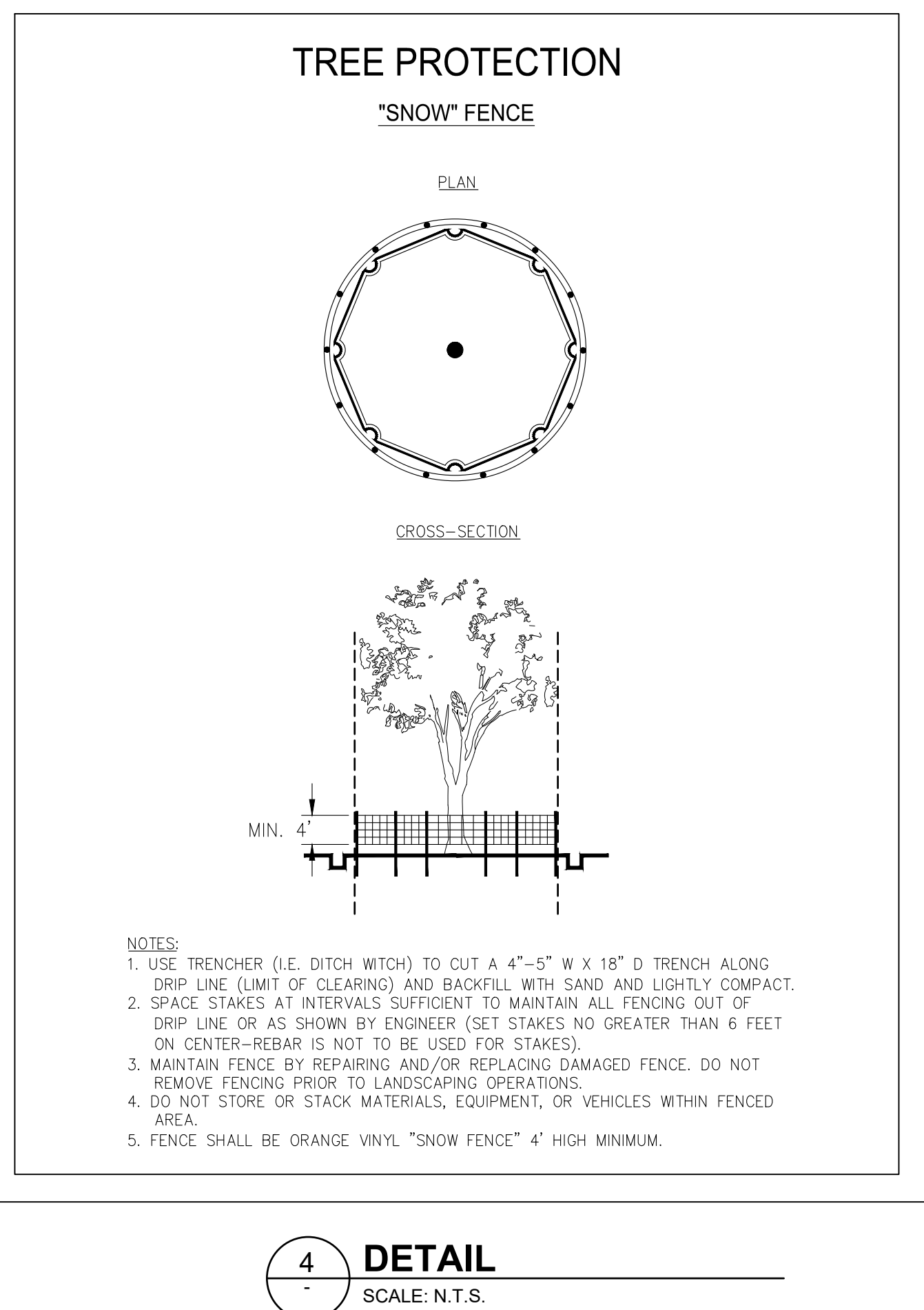
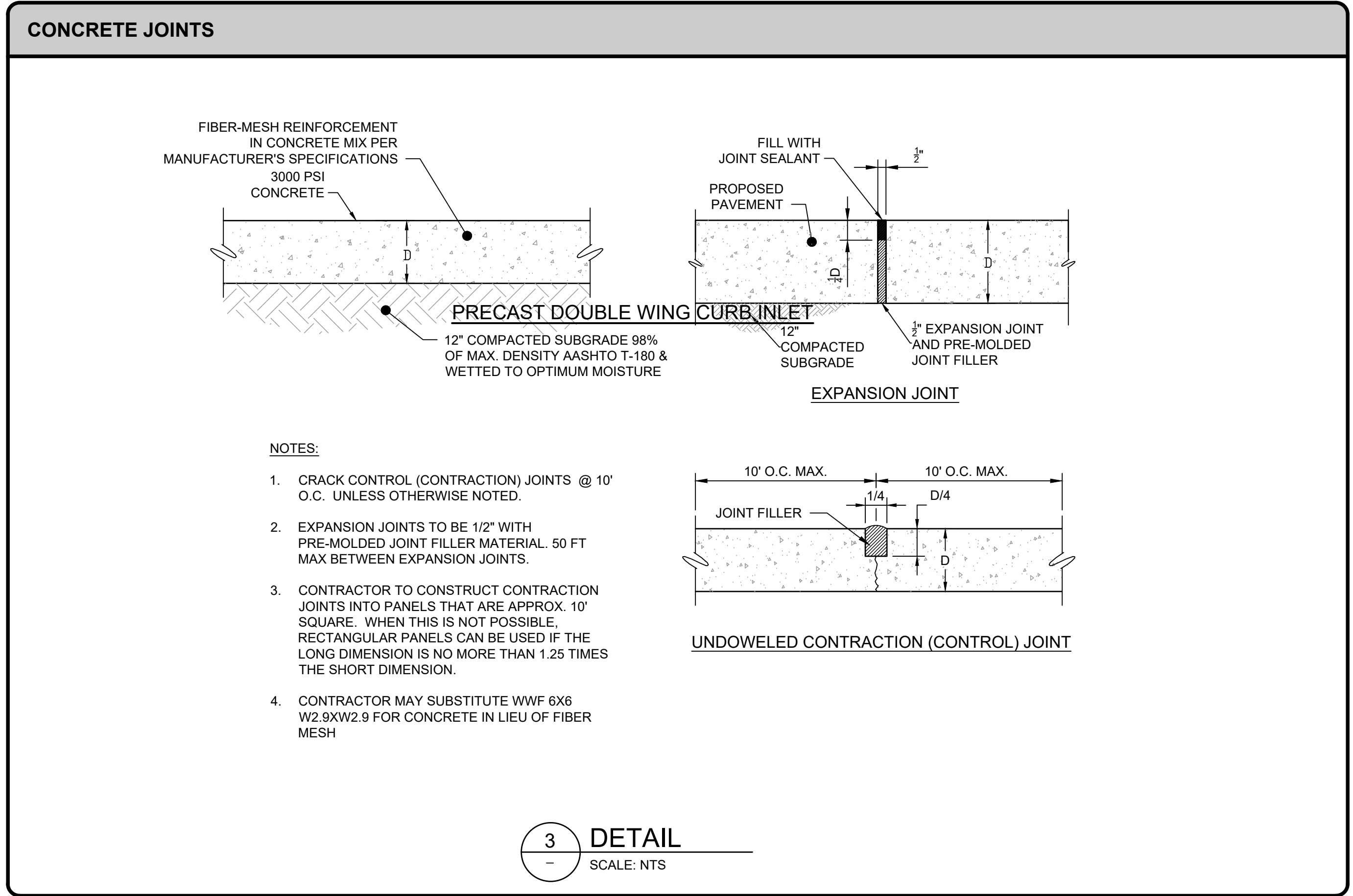
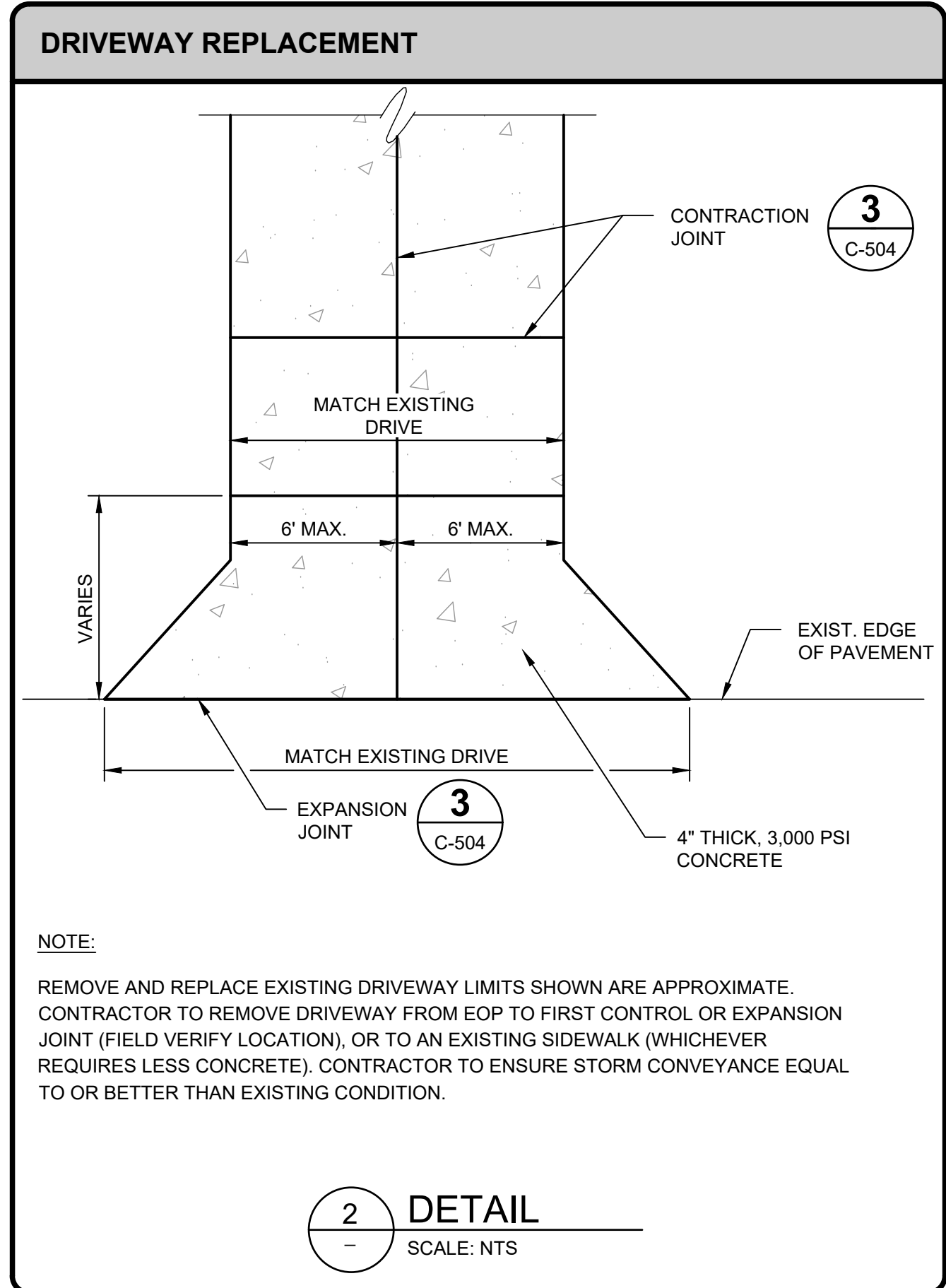
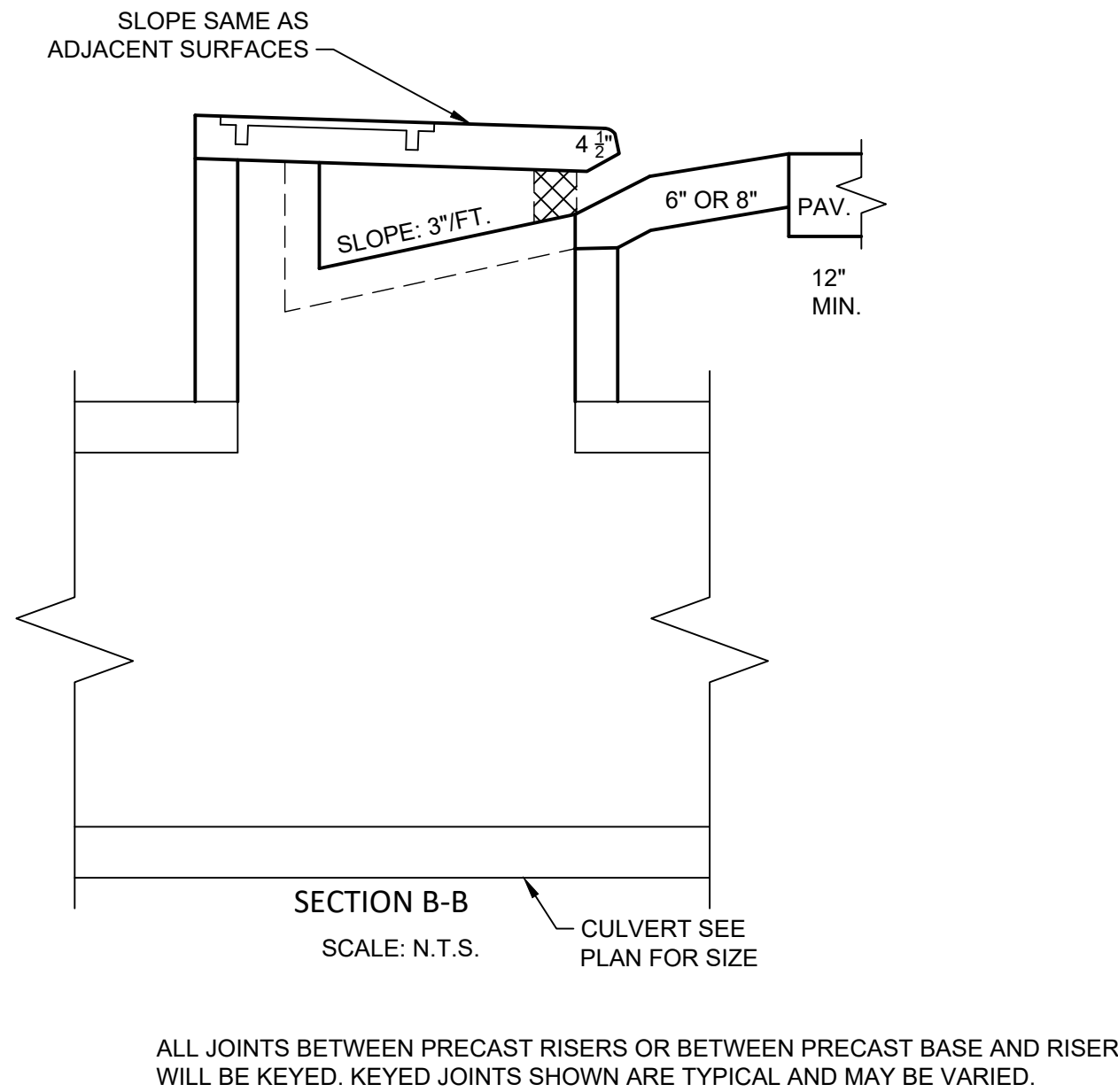
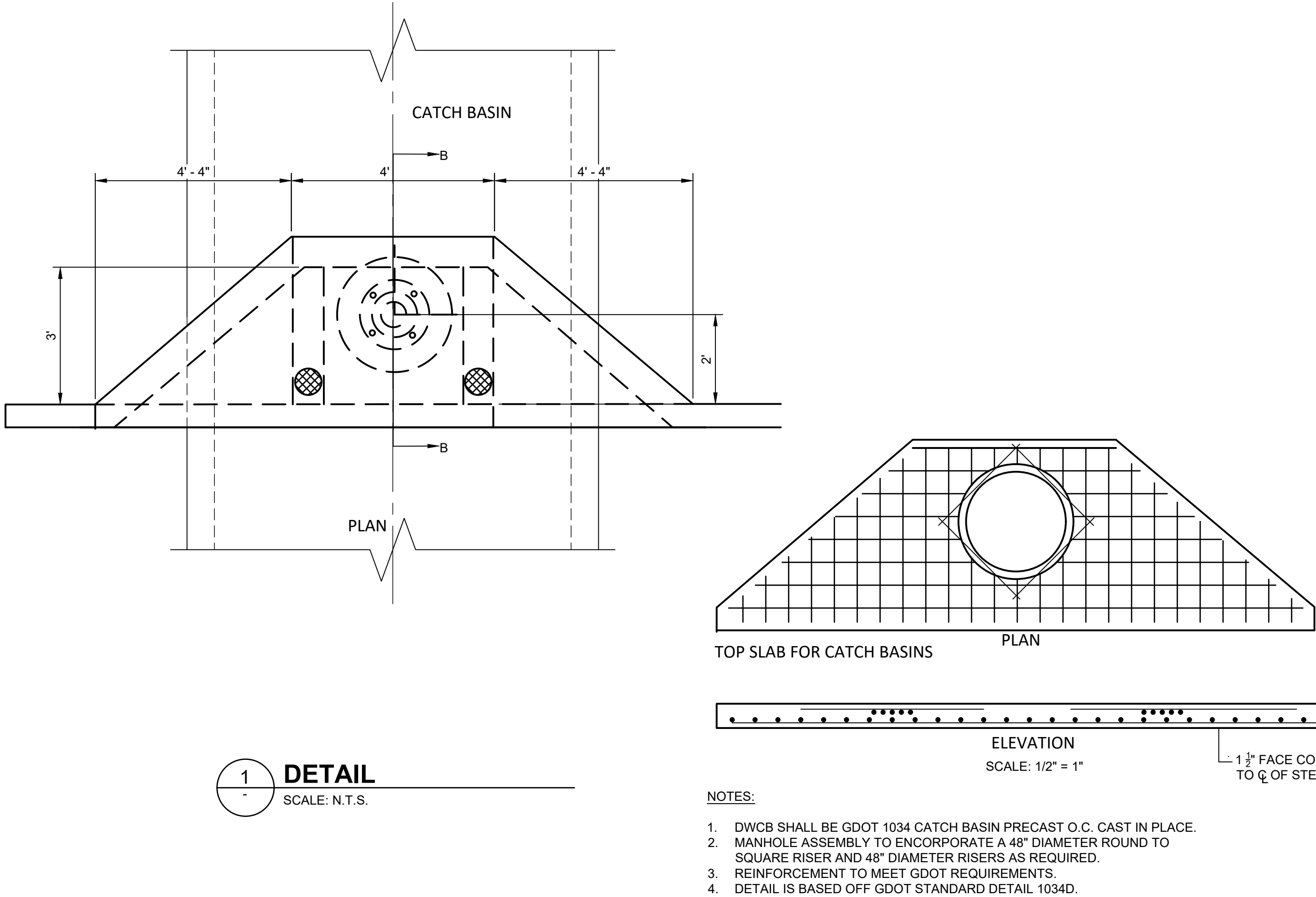
CONSTRUCTION DETAILS

Project No.: 200-01297-18002
Designed By: CG
Drawn By: HA
Checked By: DL

C-502

Bar Measures 1 inch

2/28/2020 1:34:00 PM - O:\PROJECTS\ATLANTA\101297\200-01297-18002\CADD\SHEETFILES\C-504 CONSTRUCTION DETAILS.DWG - GULMIRE, CALEB



TETRA TECH

www.tetratech.com
1899 POWERS FERRY ROAD SE, SUITE 400
ATLANTA, GEORGIA 30339
TEL: (770) 850-0949 FAX: (770) 850-0950

GSWCC LEVEL II
CERT. # 0000073529

MARK	DATE	DESCRIPTION	BY
0	02/28/20	ISSUED FOR CONSTRUCTION	CG

FAYETTE COUNTY

PATRICIA LN CULVERT REPLACEMENT

CONSTRUCTION DETAILS

Project No.: 200-01297-18002

Designed By: CG

Drawn By: HA

Checked By: DL

C-504

Bar Measures 1 inch

Copyright: Tetra Tech

[illegible]

Custom Soil Resource Report
Soil Map

Map Scale: 1:3,180 if printed on A landscape (11" x 8.5") sheet.

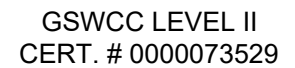
Map projection: Web Mercator Corner coordinates: WGS84 Edge ticks: UTM Zone 16N WGS84

Map Unit Symbol	Map Unit Name	Acres in AOI	Percent of AOI
AmB	Appling sandy loam, 2 to 6 percent slopes	3.7	7.1%
CeB	Cecil sandy loam, 2 to 6 percent slopes	15.3	29.7%
CeC	Cecil sandy loam, 6 to 10 percent slopes	1.7	3.2%
CIC2	Cecil sandy clay loam, 6 to 10 percent slopes, eroded	26.7	51.8%
WH	Wehadkee soils, 0 to 2 percent slopes, frequently flooded	4.2	8.2%
Totals for Area of Interest		51.6	100.0%

TETRA TECH

9 POWERS FERRY ROAD SE, SUITE 400
ATLANTA, GEORGIA 30339
TEL: (770) 850-0949 FAX: (770) 850-0950

www.tetrattech.com



FAYETTE COUNTY
PATRICIA LN CULVERT REPLACEMENT
ESPC PLAN

C-506