

February 5, 2025

**Subject: RFQ #2521-B: Gras Cutting Services - Fire
Addendum #1**

Gentlemen/Ladies:

1. **Attached are the maps for the 9 fire stations, fire depot, and training center (Attachment 1).**
2. **Cutting is Monday or Tuesday, and hours are 7:00am-4:00pm for this location.**

Received by (Name): _____ Company _____

Note: If this addendum is not returned to the Fayette County Purchasing Department or if it is returned not signed, responding individuals, companies or other organizations will still be responsible for the requirements of this addendum and the specifications or changes herein.

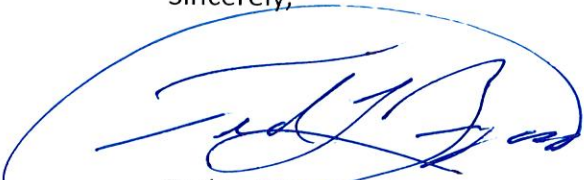
Questions regarding this ITB will be accepted until **3:00 p.m., Friday, February 21, 2025**. After this date and time, we will not be able to respond to any inquiries about this project.

The opening date for this ITB has not changed. **The opening time and date are 3:00p.m., Wednesday, February 26, 2025.** Quotes must be received by the Purchasing Department at the address above, Suite 204, at or before the opening date and time. **Please advise that quotes can also be emailed to ccobb@fayettcountyga.gov or faxed to (770) 719-5544.**

The deadline for inquiries has passed, so the Purchasing Department will not be able to accept any additional questions after this time.

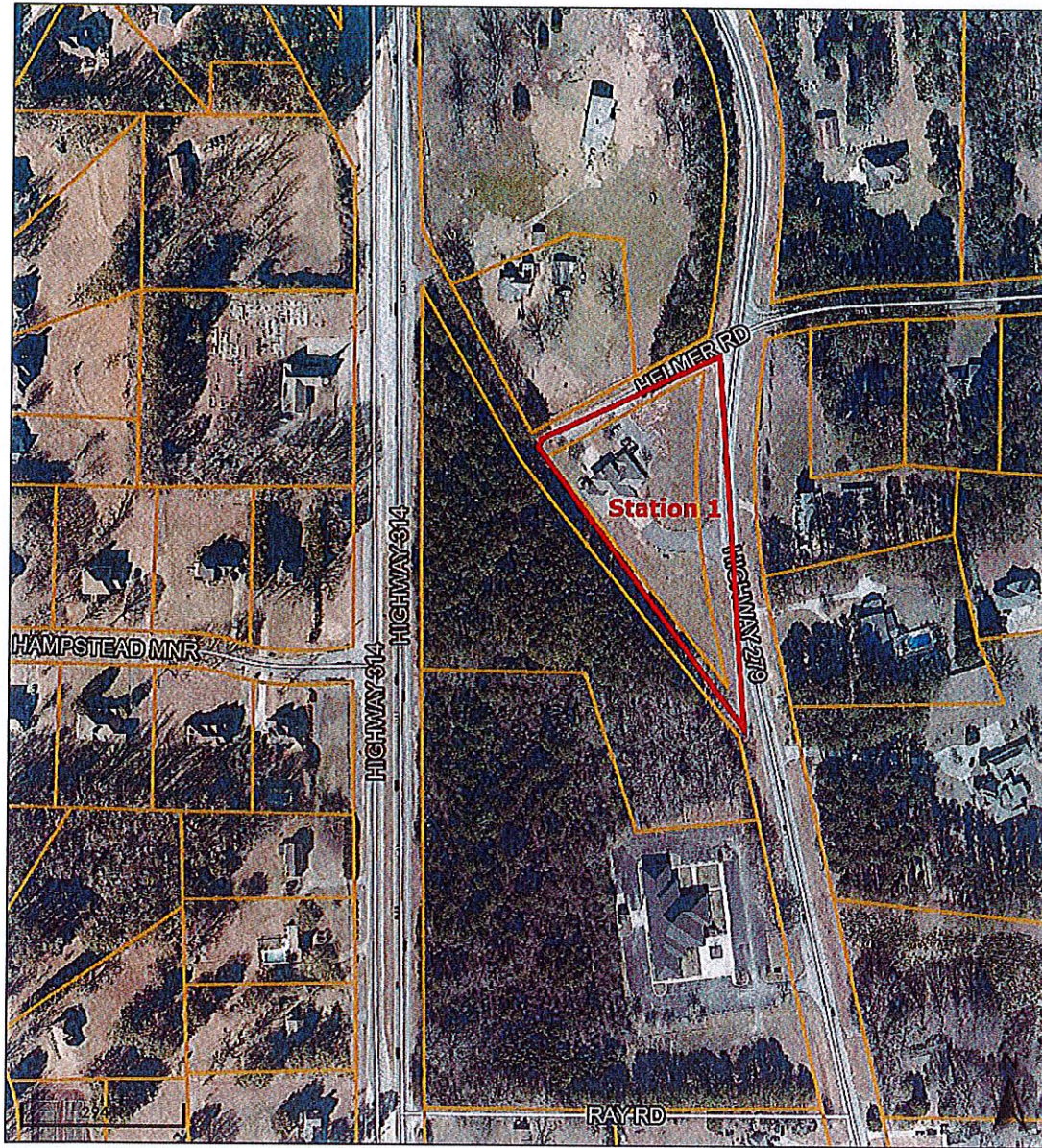
If you have questions, please contact Colette Cobb, Contract Administrator at (770) 305-5115, fax (770) 719-5544 or email at ccobb@fayettecountyga.gov.

Sincerely,



Ted L. Burgess
Chief Procurement Officer

TLB/cc



Overview



Legend

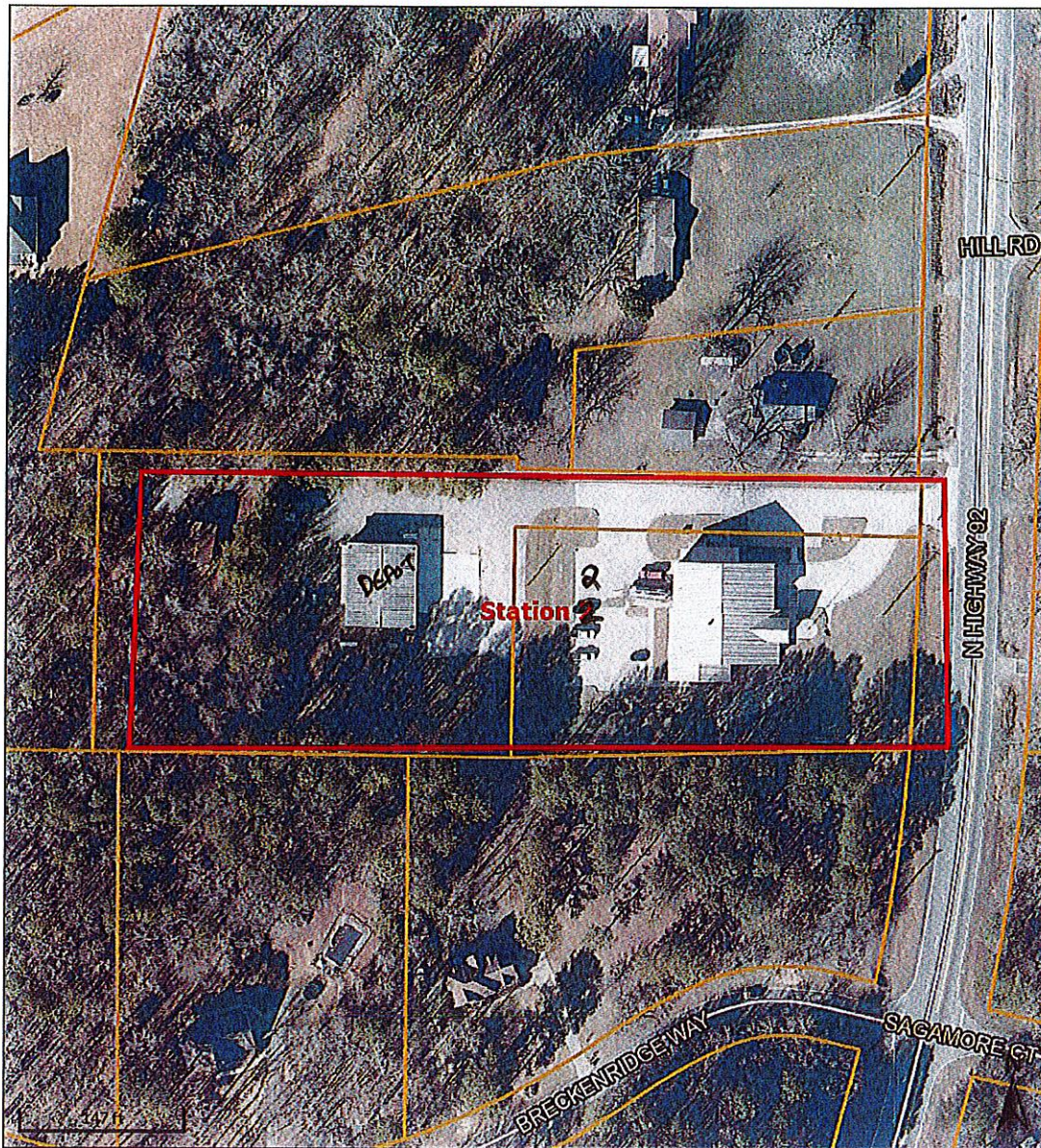
-  Parcels
-  Roads
- City Limits
 -  BROOKS
 -  FAYETTEVILLE
 -  PEACHTREE CITY
 -  TYRONE
 -  WOOLSEY

Date created: 12/13/2024
Last Data Uploaded: 12/13/2024 6:01:17 AM

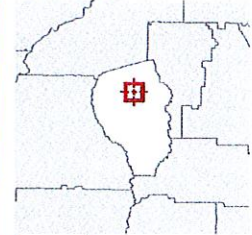
Developed by  **SCHNEIDER**
GEOSPATIAL



Fayette County, GA



Overview



Legend

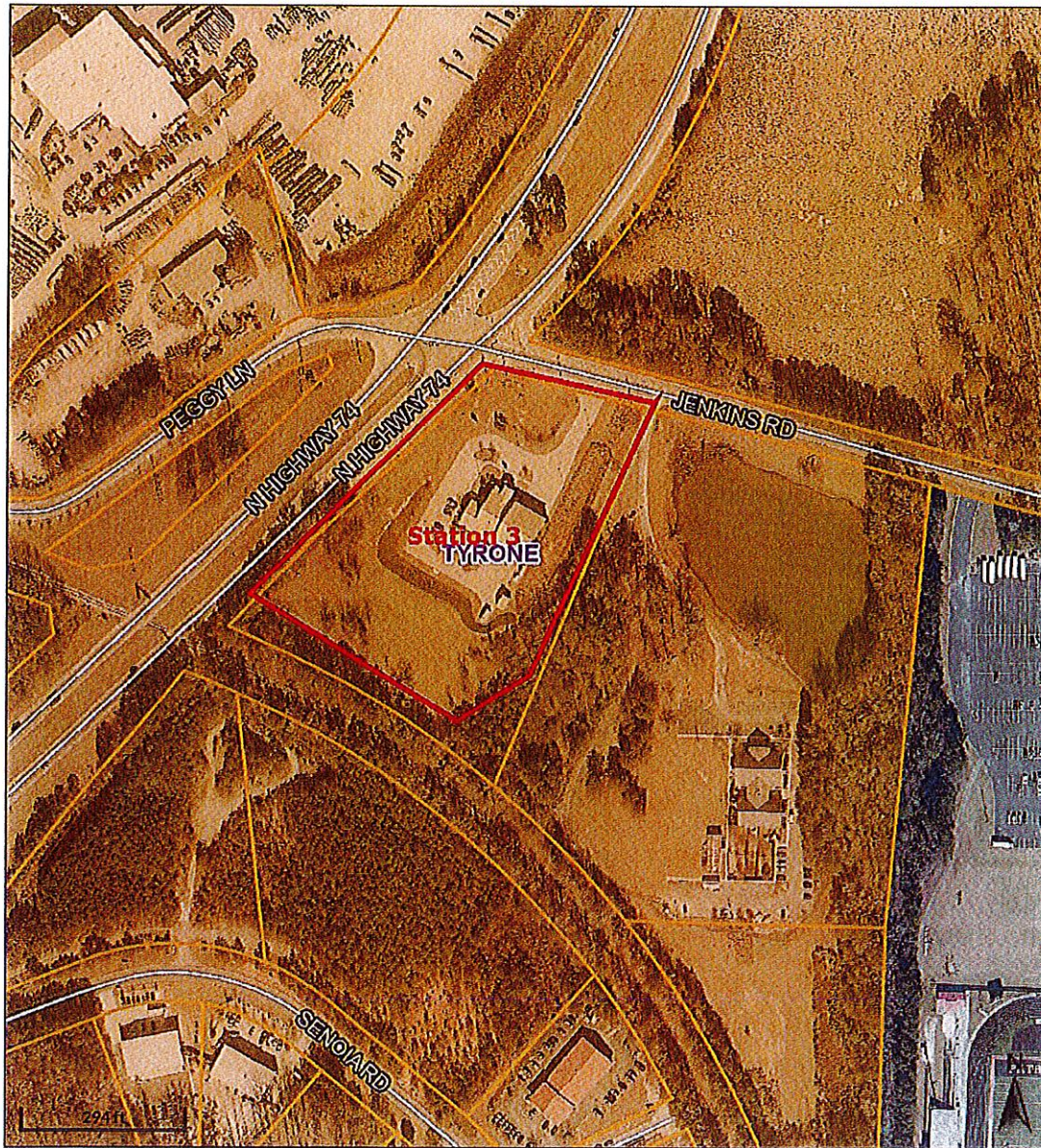
- Parcels
- Roads
- City Limits
 - BROOKS
 - FAYETTEVILLE
 - PEACHTREE CITY
 - TYRONE
 - WOOLSEY

Date created: 12/13/2024
Last Data Uploaded: 12/13/2024 6:01:17 AM





Fayette County, GA



Overview



Legend

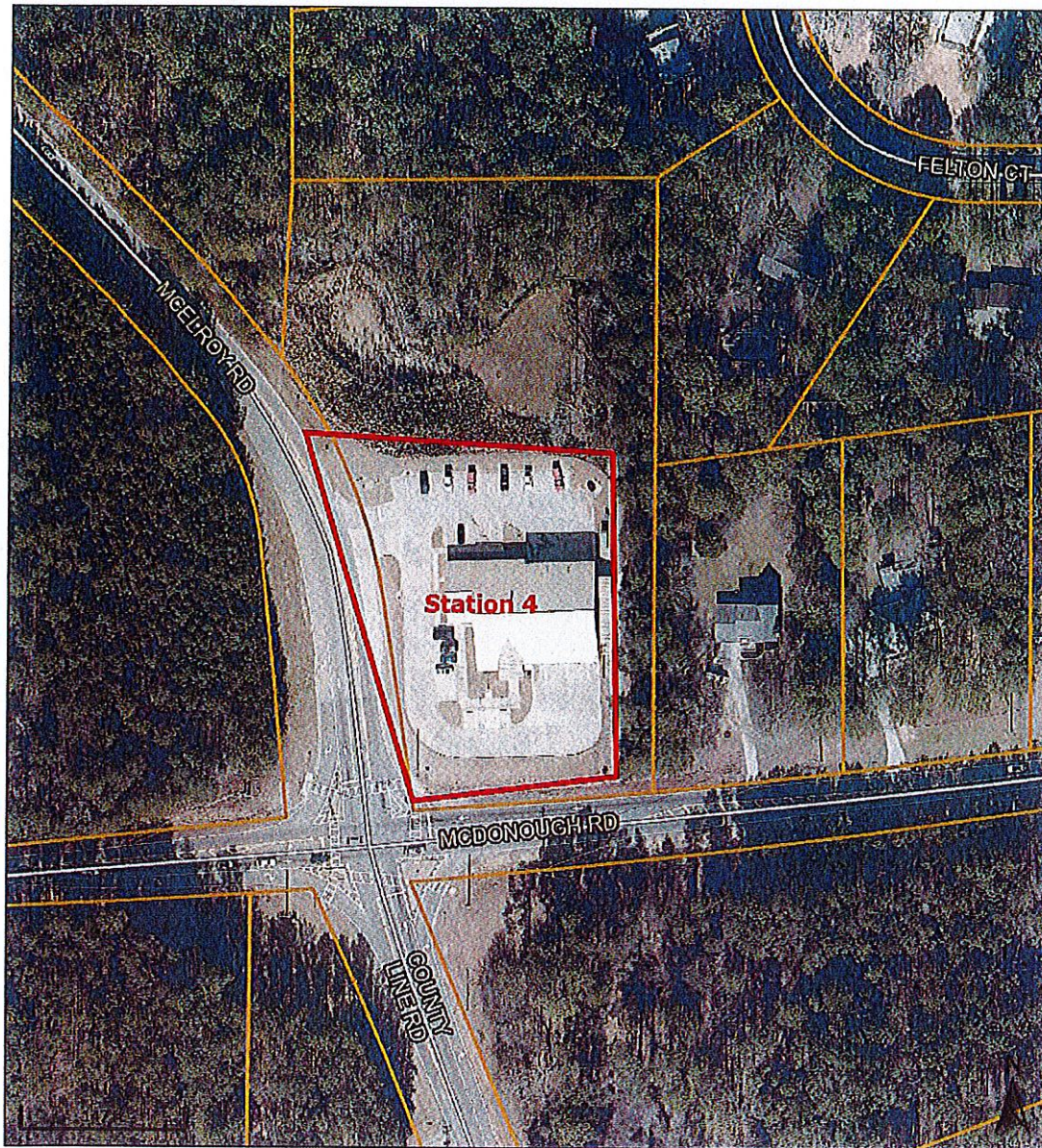
- Parcels
- Roads
- City Limits
 - BROOKS
 - FAYETTEVILLE
 - PEACHTREE CITY
 - TYRONE
 - WOOLSEY

Date created: 12/13/2024
Last Data Uploaded: 12/13/2024 6:01:17 AM

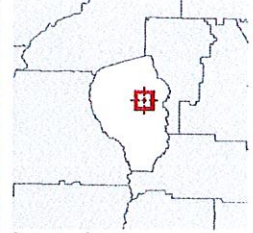
Developed by SCHNEIDER
GEO SPATIAL



Fayette County, GA



Overview



Legend

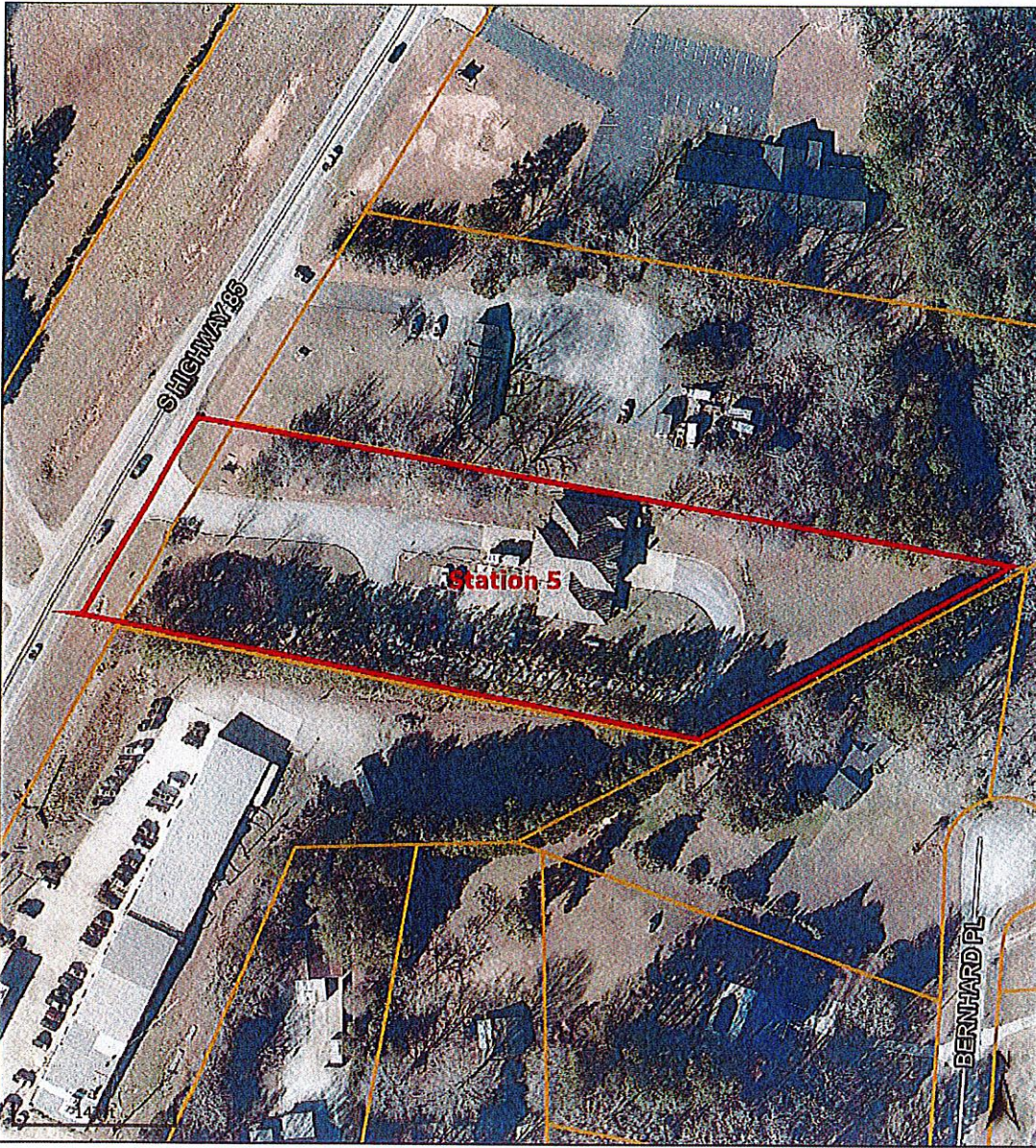
- Parcels
- Roads
- City Limits
 - BROOKS
 - FAYETTEVILLE
 - PEACHTREE CITY
 - TYRONE
 - WOOLSEY

Date created: 12/13/2024
Last Data Uploaded: 12/13/2024 6:01:17 AM

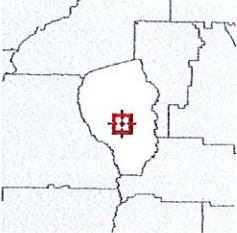
Developed by  SCHNEIDER
GEOSPATIAL



Fayette County, GA



Overview



Legend

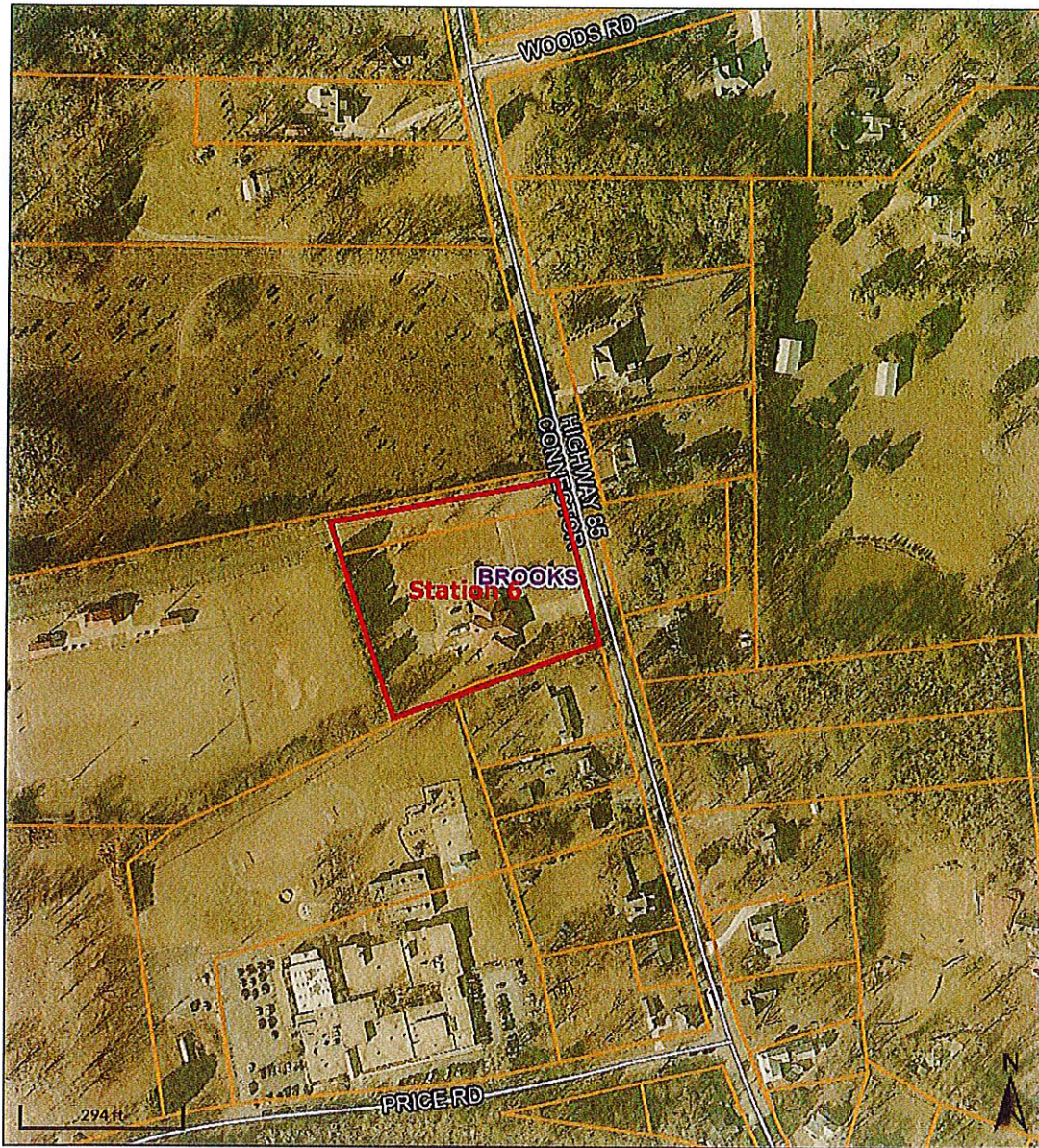
- Parcels
- Roads
- City Limits
 - BROOKS
 - FAYETTEVILLE
 - PEACHTREE CITY
 - TYRONE
 - WOOLSEY

Date created: 12/13/2024
Last Data Uploaded: 12/13/2024 6:01:17 AM

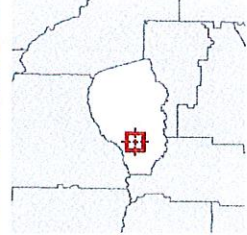




Fayette County, GA



Overview



Legend

- Parcels
- Roads
- City Limits**
 - BROOKS
 - FAYETTEVILLE
 - PEACHTREE CITY
 - TYRONE
 - WOOLSEY

Date created: 12/13/2024
Last Data Uploaded: 12/13/2024 6:01:17 AM

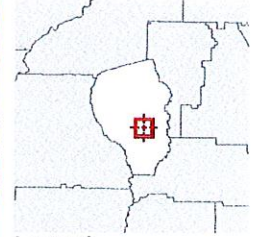
Developed by SCHNEIDER
GEOSPATIAL



Fayette County, GA



Overview



Legend

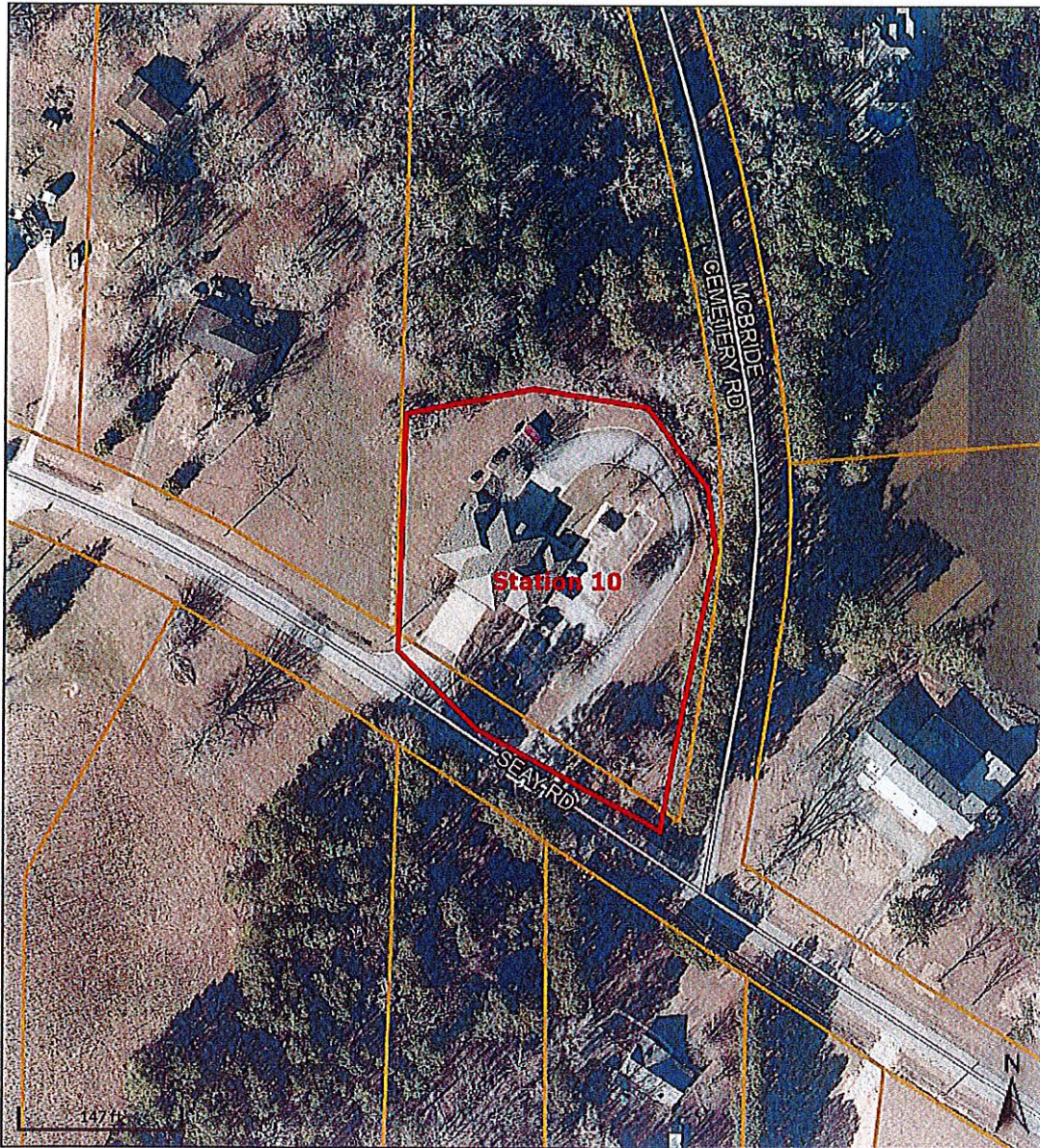
- Parcels
- Roads
- City Limits**
 - BROOKS
 - FAYETTEVILLE
 - PEACHTREE CITY
 - TYRONE
 - WOOLSEY

Date created: 12/13/2024
Last Data Uploaded: 12/13/2024 6:01:17 AM

Developed by SCHNEIDER
GEOSPATIAL



Fayette County, GA



Overview



Legend

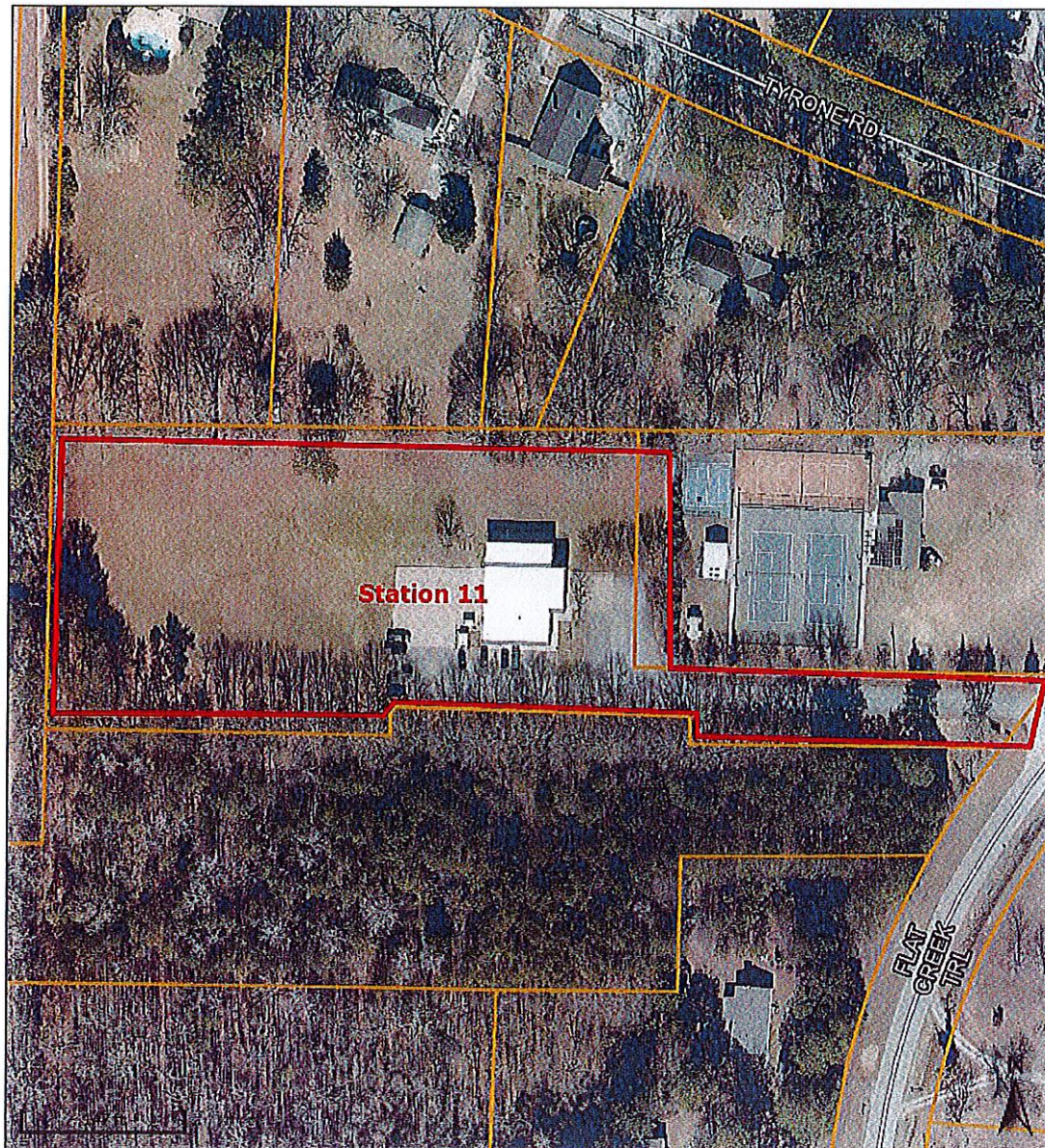
- Parcels
- Roads
- City Limits
 - BROOKS
 - FAYETTEVILLE
 - PEACHTREE CITY
 - TYRONE
 - WOOLSEY

Date created: 12/13/2024
Last Data Uploaded: 12/13/2024 6:01:17 AM

Developed by SCHNEIDER
GEO SPATIAL



Fayette County, GA



Overview

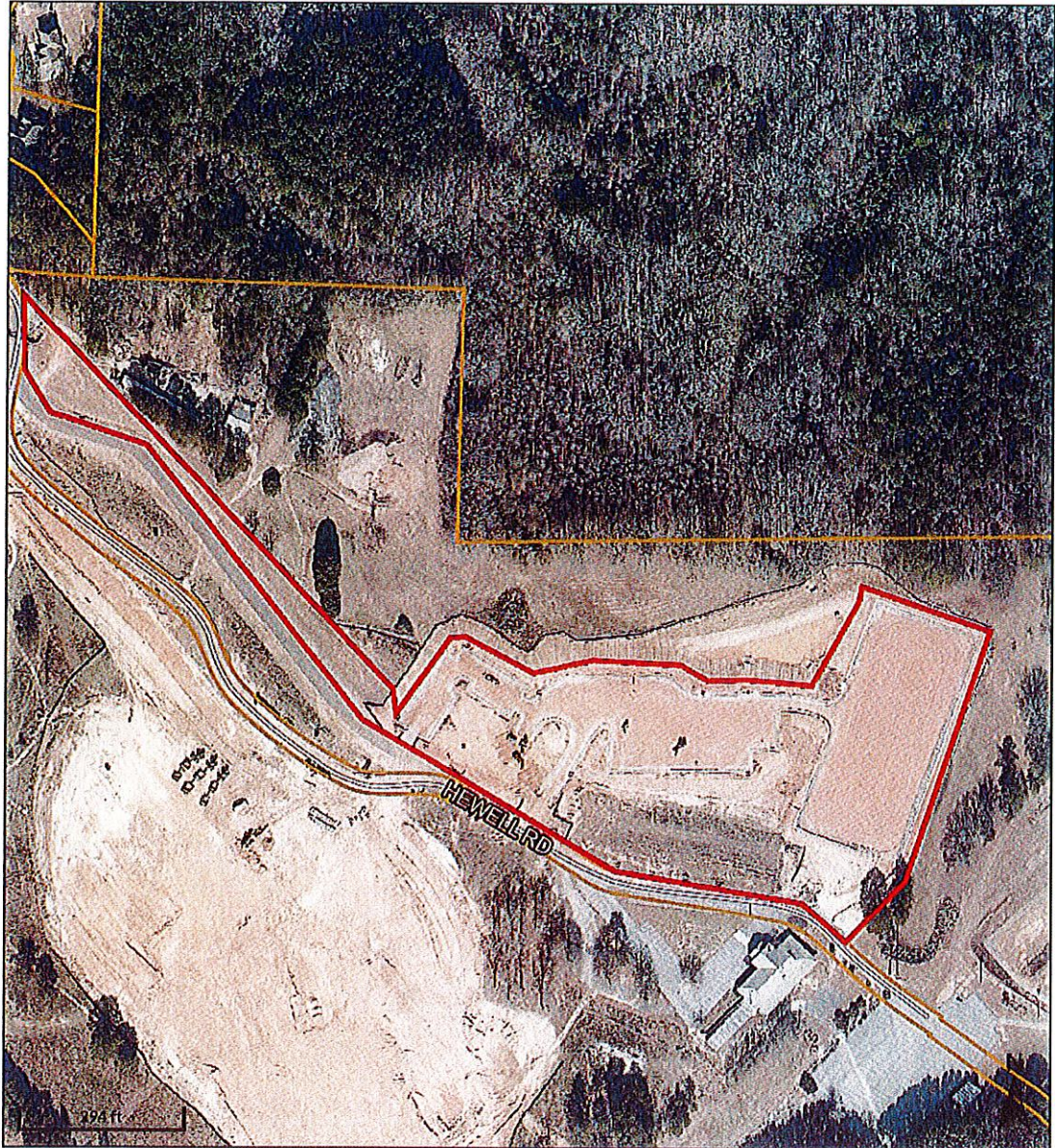


Legend

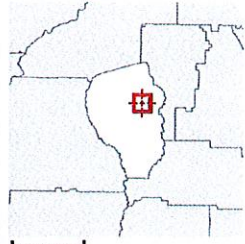
- Parcels
- Roads
- City Limits
 - BROOKS
 - FAYETTEVILLE
 - PEACHTREE CITY
 - TYRONE
 - WOOLSEY

Date created: 12/13/2024
Last Data Uploaded: 12/13/2024 6:01:17 AM

Developed by  SCHNEIDER
GEOSPATIAL



Overview



Legend

-  Parcels
-  Roads
- City Limits**
 -  BROOKS
 -  FAYETTEVILLE
 -  PEACHTREE CITY
 -  TYRONE
 -  WOOLSEY

Date created: 2/4/2025
Last Data Uploaded: 2/4/2025 5:02:59 AM

Developed by  **SCHNEIDER**
GEOSPATIAL