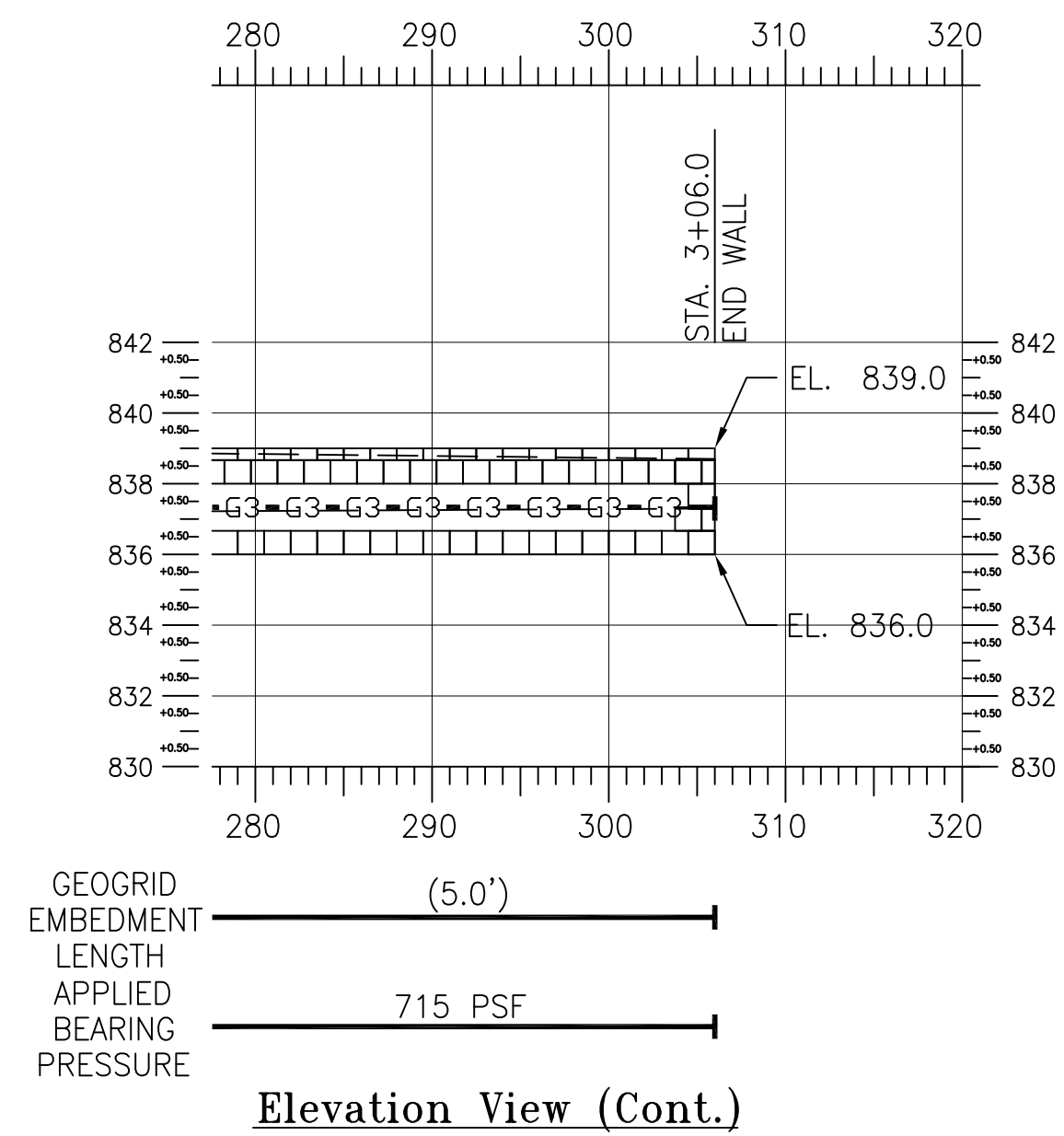
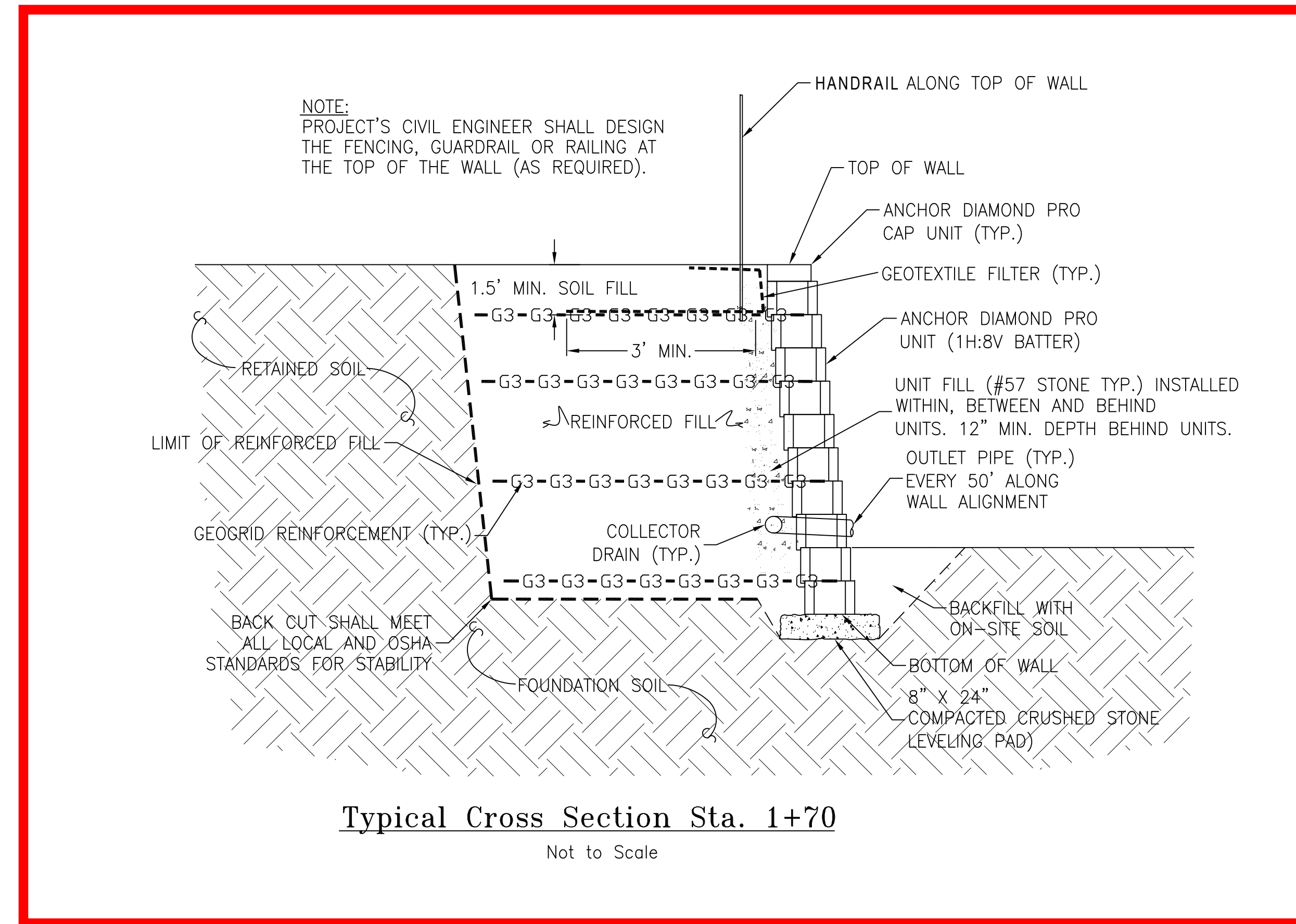


Elevation View



Elevation View (Cont.)

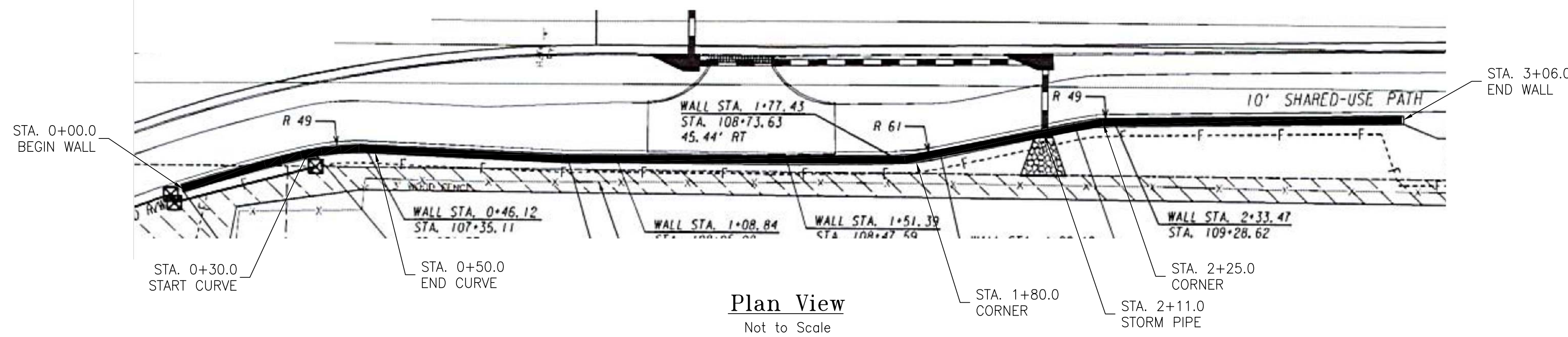


Typical Cross Section Sta. 1+70

Not to Scale

LEGEND

- ANCHOR DIAMOND PRO CAP UNIT
- ANCHOR DIAMOND PRO BLOCK UNIT
- G3-G3-G3- HTG 35
- G3+G3- GEOGRID CHANGE OR TERMINATION (XX.X')
- GEOGRID EMBEDMENT LENGTH
- PROPOSED GRADE



Plan View

Not to Scale

- NOTE:
1. GRADING PLAN HAS BEEN COPIED FROM CIVIL PLAN FOR REFERENCE. REFER TO CIVIL SITE PLANS FOR STRUCTURE LAYOUT INFORMATION. SEE SECTION 1.0, CONSTRUCTION NOTES.
 2. GRADING ABOVE RETAINING WALLS MUST DIVERT DRAINAGE AWAY FROM WALL.
 3. ON-SITE RETAINING WALL ADJUSTMENT MAY BE REQUIRED TO ACCOMMODATE THE SITE CONDITION.

THESE DRAWINGS ALONG WITH THE MERELA CONSULTANTS CO. DESIGN CALCULATIONS CONSTITUTE THE COMPLETE SET OF RETAINING WALL DESIGN DOCUMENTS. THESE DOCUMENTS SHALL BE REVIEWED AND USED ONLY BY THOSE PARTIES DIRECTLY PARTICIPATING ON THIS PROJECT. THESE DOCUMENTS TAKE PRECEDENCE OVER ANY OTHER DOCUMENTS AND SHALL BE THE PRIMARY DOCUMENT TO DETERMINE THE RETAINING WALL DESIGN AND CONSTRUCTION. THIS DRAWING IS BEING FURNISHED FOR USE ON THIS PROJECT ONLY. ANY PARTY ACCEPTING THIS DOCUMENT DOES SO IN CONFIDENCE AND AGREES THAT IT SHALL NOT BE DUPLICATED IN WHOLE OR IN PART, NOR DISCLOSED TO OTHERS WITHOUT THE CONSENT OF MERELA CONSULTANTS CO.

MERELA Consultants Co.
 3830 Thompson Mill Rd., Buford, GA 30519
 Phone: (770) 614-3898 • Fax: (770) 831-5511

FORTRESS
 REGISTERED PROFESSIONAL ENGINEERS

10945 State Bridge Road, Suite 401-427 • Johns Creek, GA 30022
 Phone: (770) 655-4315 • Fax: (678) 601-6455

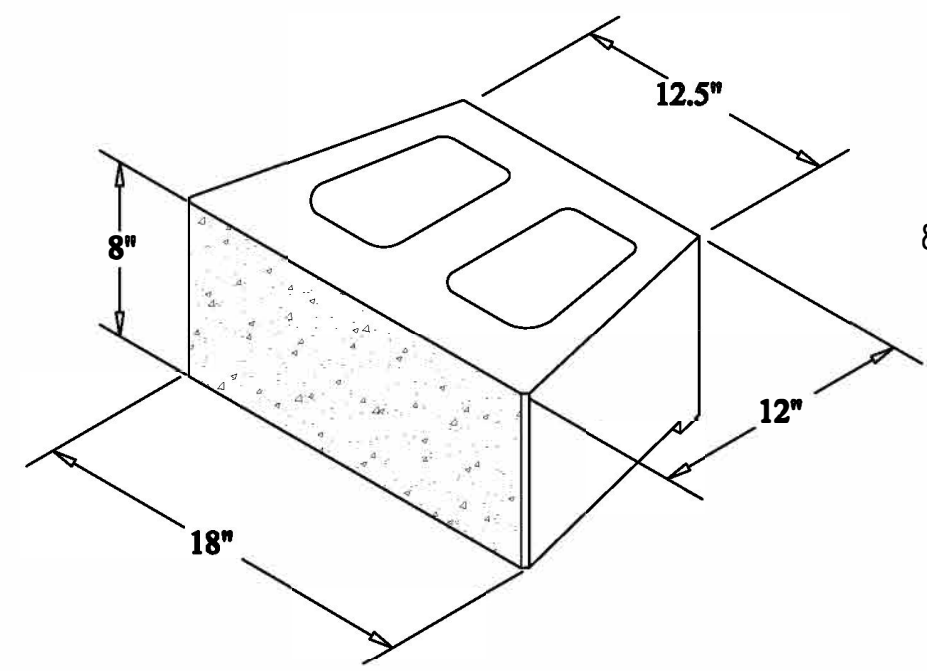
REVISION/ISSUE	
1	5/16/23 ISSUED FOR CONSTRUCTION

**Redwine Rd,
 Peachtree Pkwy Intersection**
 Fayetteville Georgia

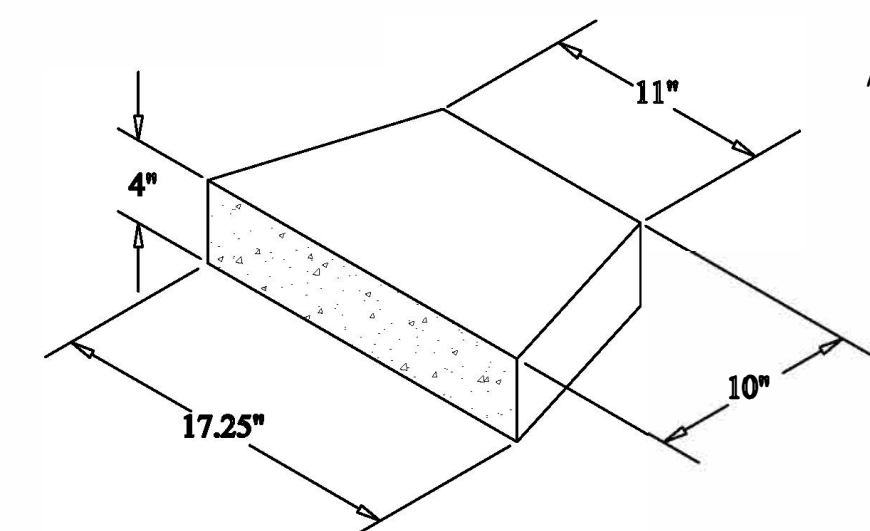
**Elevation View
 Plan View
 Typical Cross Section**



Project Number: 230509
 Date Drawn: 5/16/23
 Designed By: JXF GA PE # 26683
 Scale: As Shown
 Elevation View: RW3

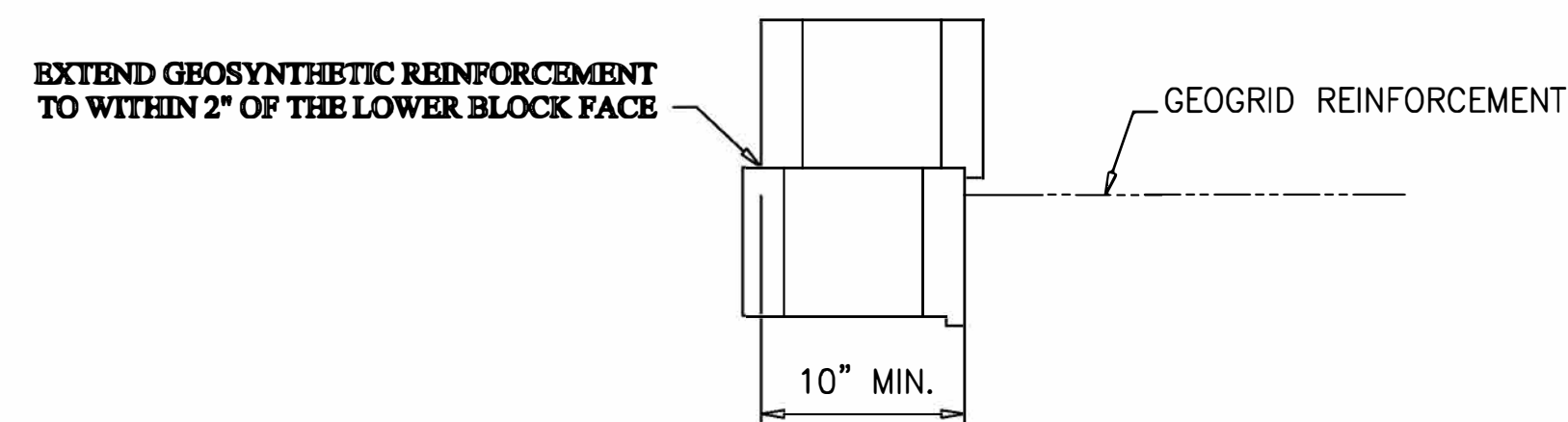


BLOCK UNIT

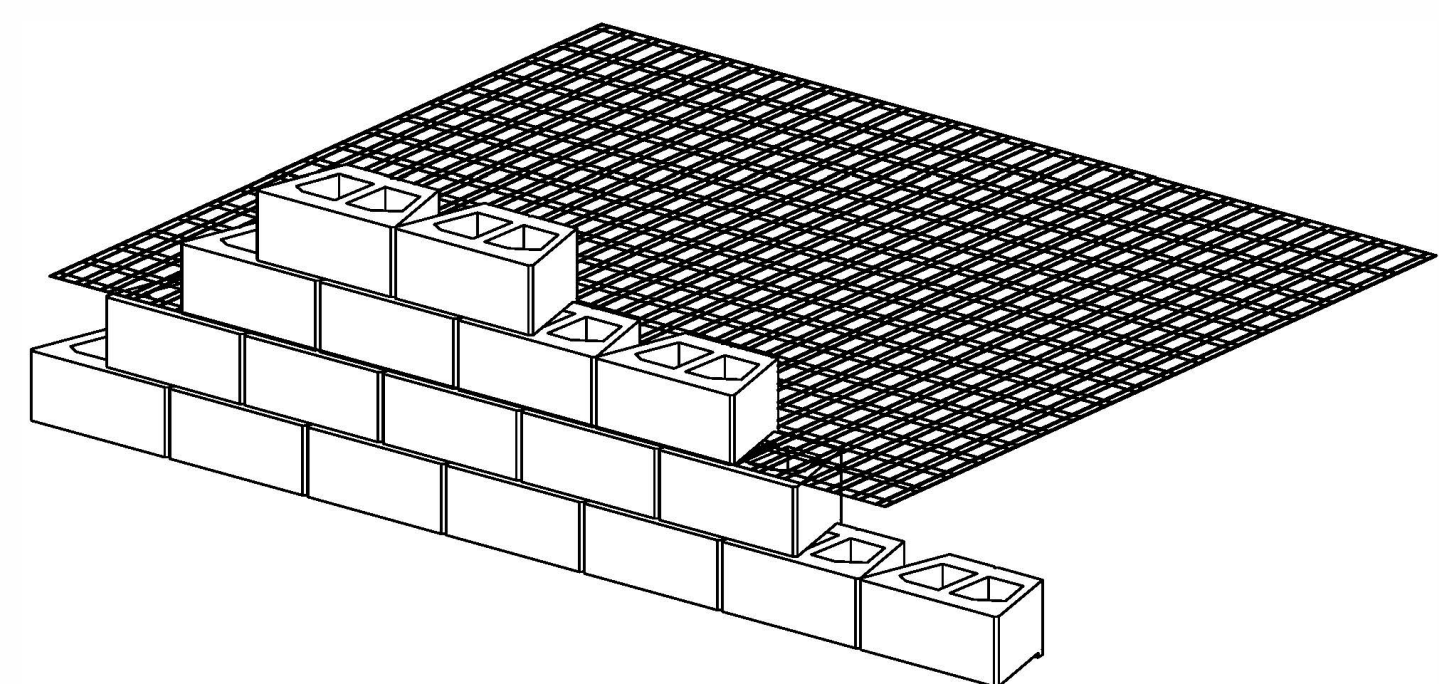


CAP UNIT

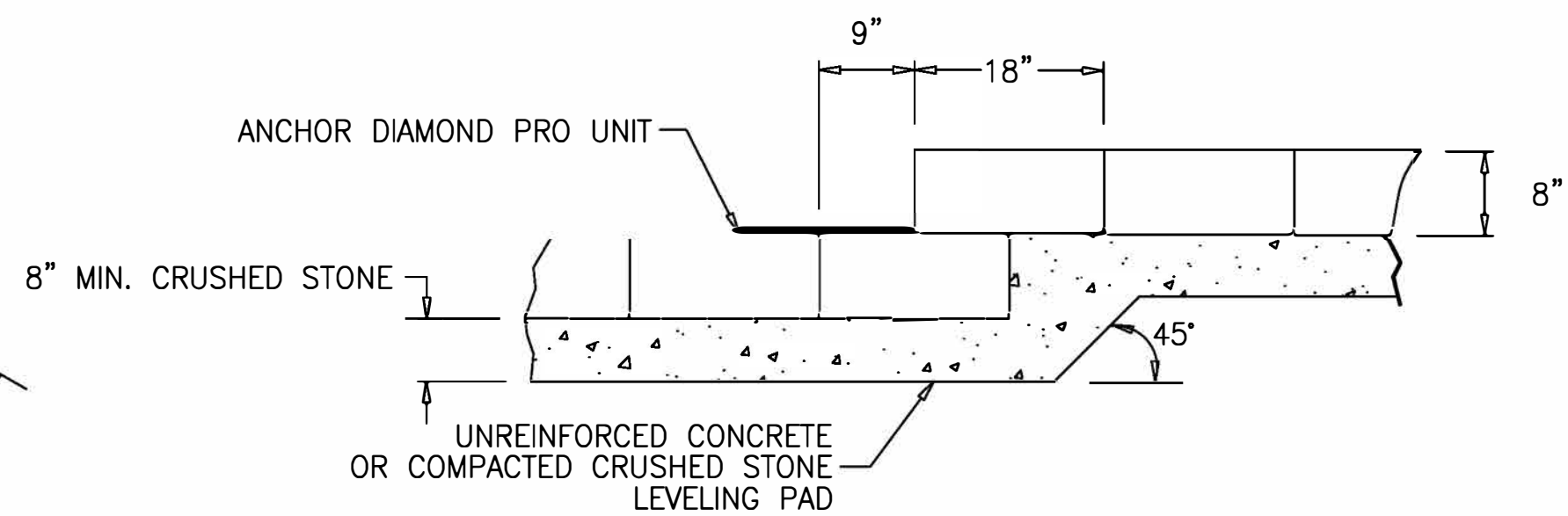
ANCHOR DIAMOND PRO UNIT
NOT TO SCALE



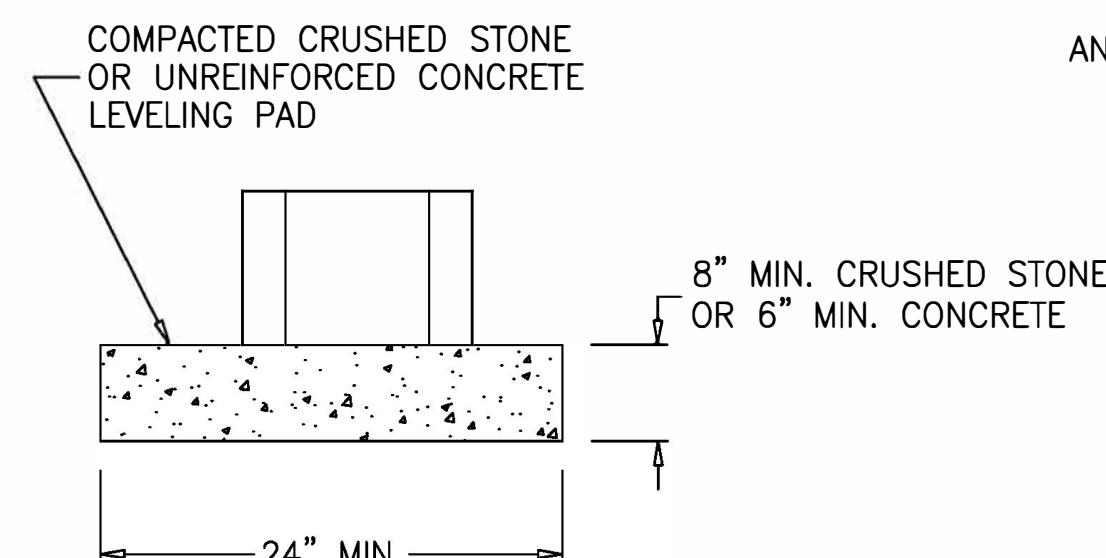
REINFORCEMENT CONNECTION DETAIL
NOT TO SCALE



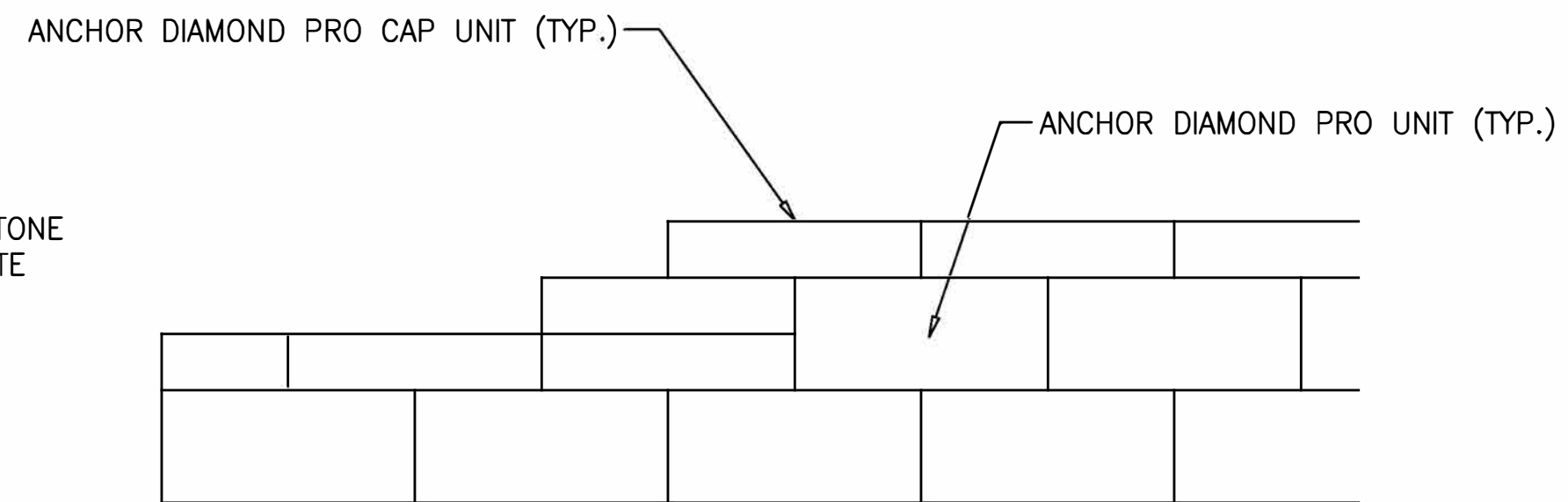
ANCHOR DIAMOND PRO - GEOGRID CONNECTION DETAIL
NOT TO SCALE



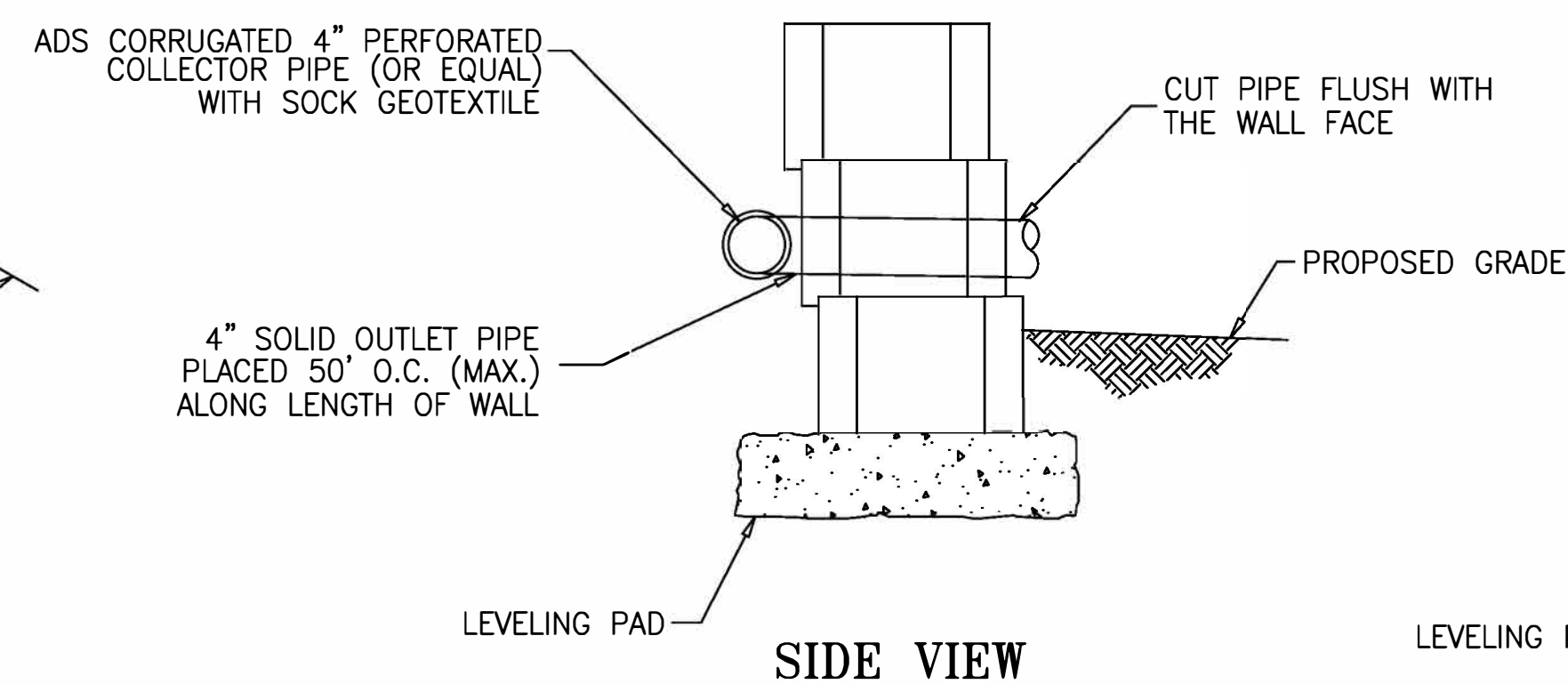
TYPICAL LEVELING PAD STEP DETAIL
NOT TO SCALE



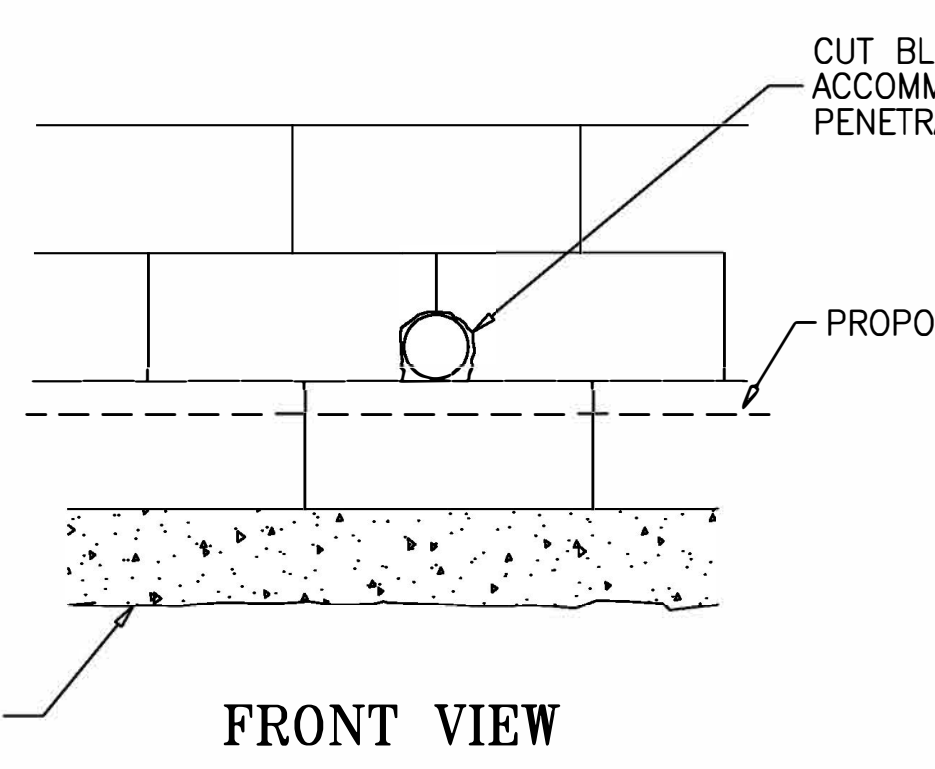
LEVELING PAD DETAIL
NOT TO SCALE



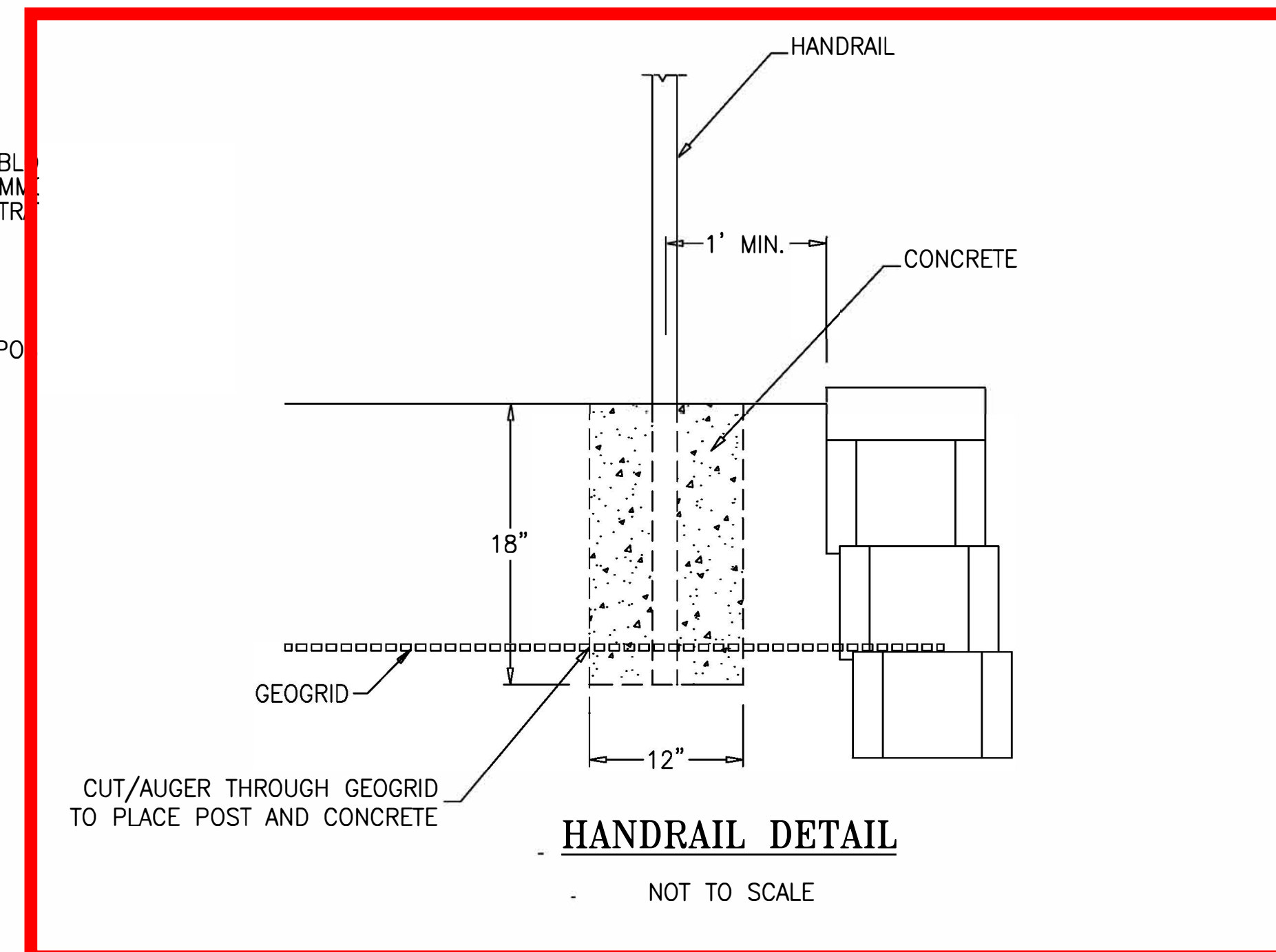
TOP OF WALL STEP
NOT TO SCALE



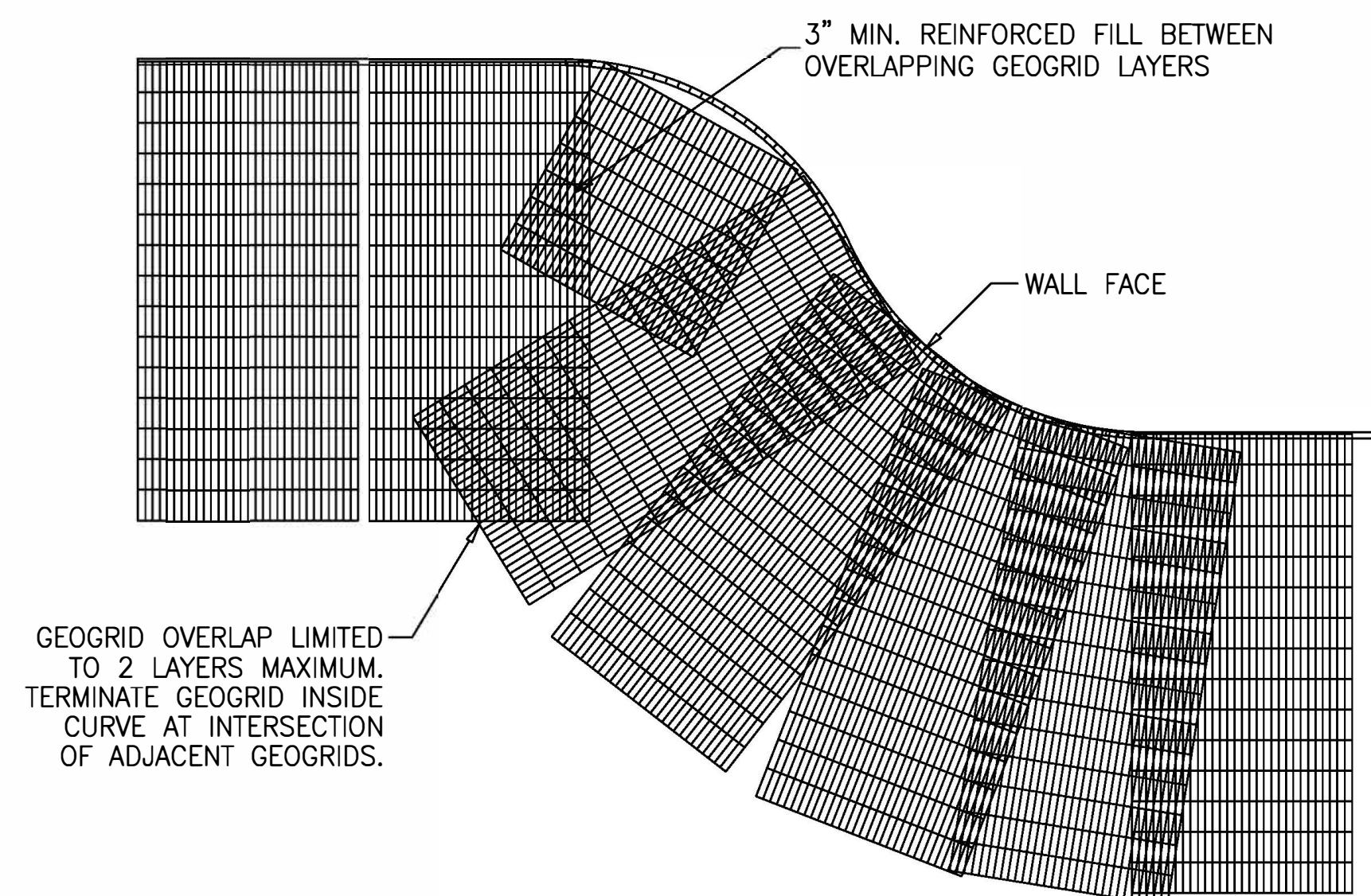
DRAIN PIPE OUTLET
NOT TO SCALE



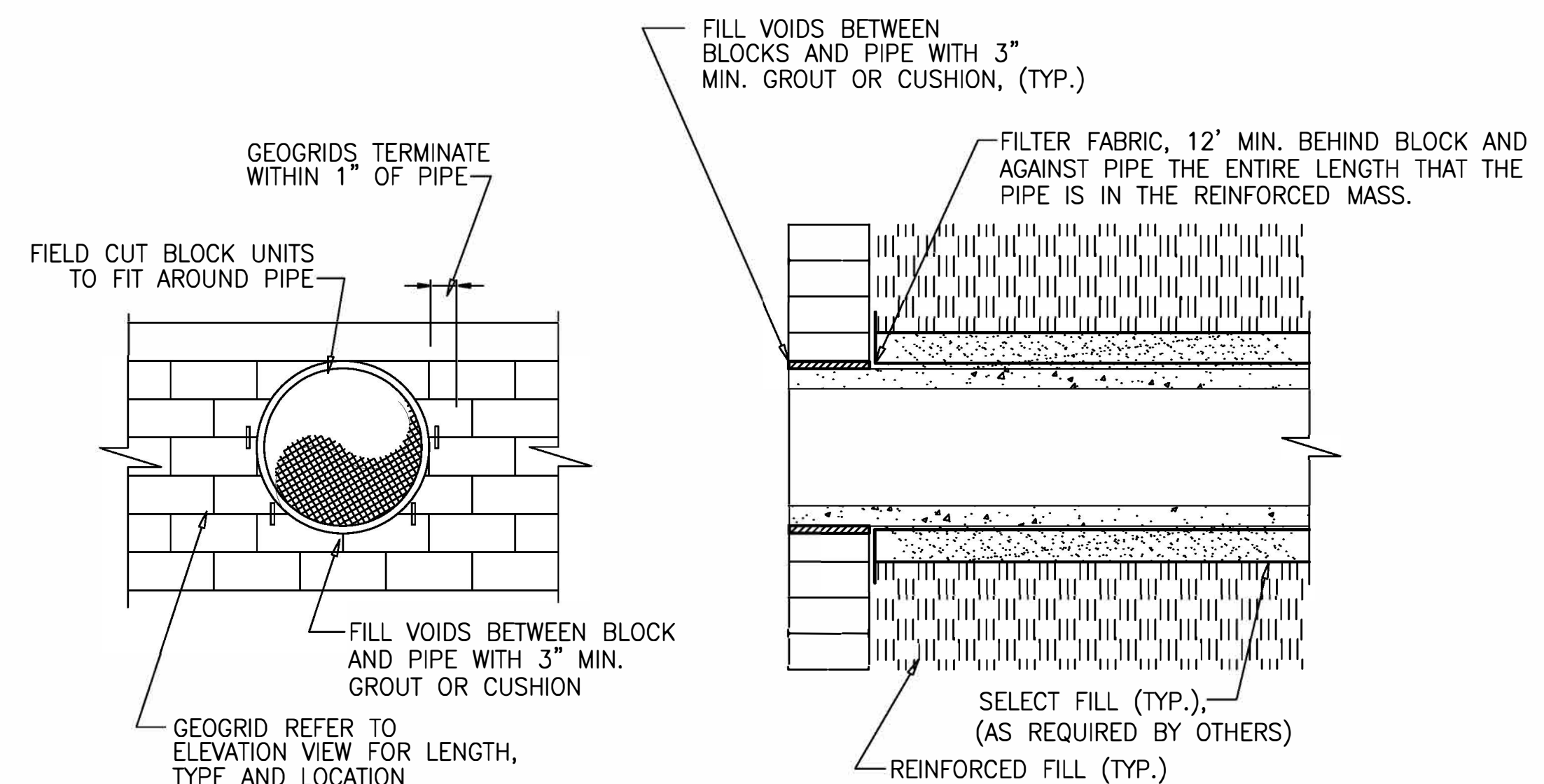
FRONT VIEW



HANDRAIL DETAIL
NOT TO SCALE



GEOGRID PLACEMENT ON CURVES
Not to Scale



ELEVATION VIEW

CROSS-SECTION

PIPE PENETRATION DETAIL
IF APPLICABLE)
NOT TO SCALE

MERELA Consultants Co.
3830 Thompson Mill Rd., Buford, GA 30519
Phone: (770) 614-3898 • Fax: (770) 831-5511

FORTRESS
REGISTERED PROFESSIONAL ENGINEERS

10945 State Bridge Road, Suite 401-427 • Johns Creek, GA 30022
Phone: (770) 655-4315 • Fax: (678) 601-6455

REVISION/ISSUE
1 5/16/23 ISSUED FOR CONSTRUCTION

**Redwine Rd,
Peachtree Pkwy Intersection**
Payetteville Georgia

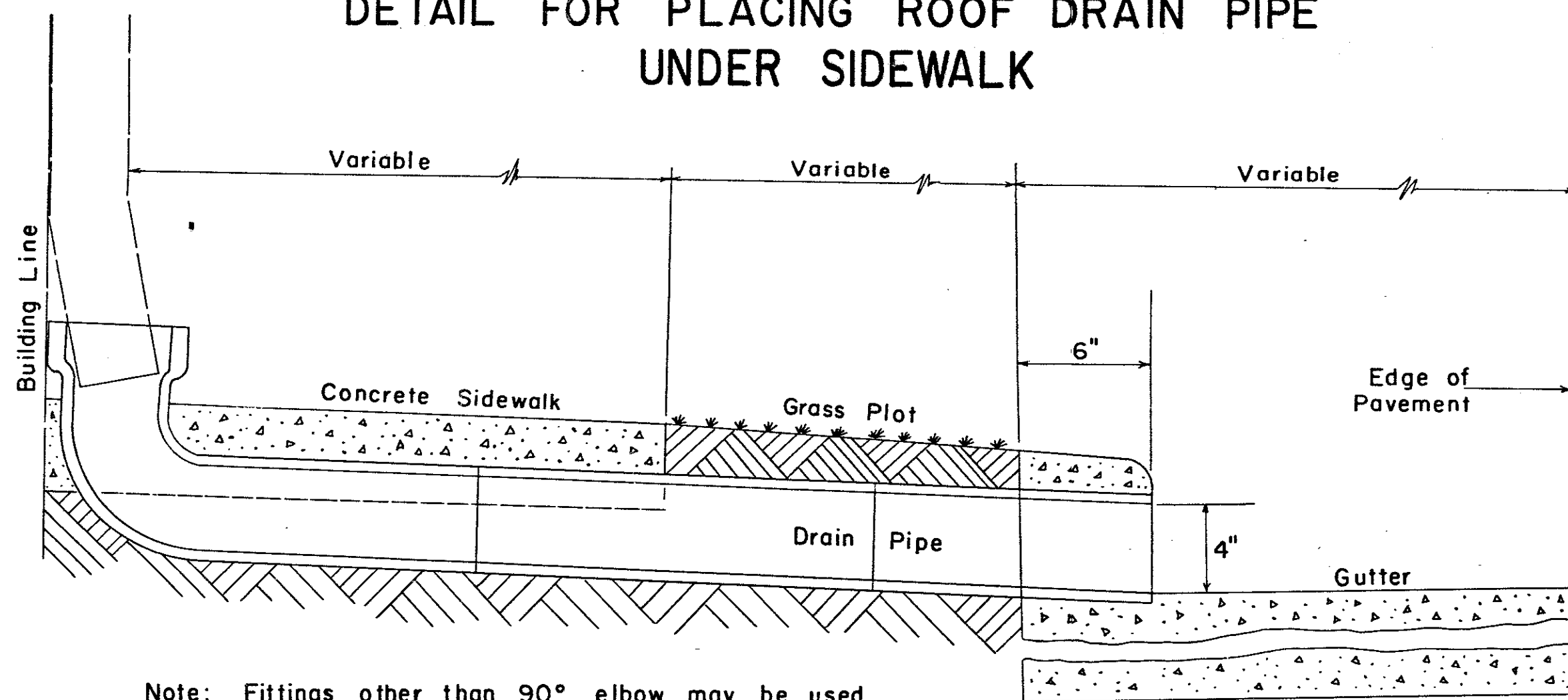
Typical Details



Project Number	230509
Date Drawn	5/16/23
Designed By	JXF
GA PE #	26683
Scale	No Scale
Typical Details	

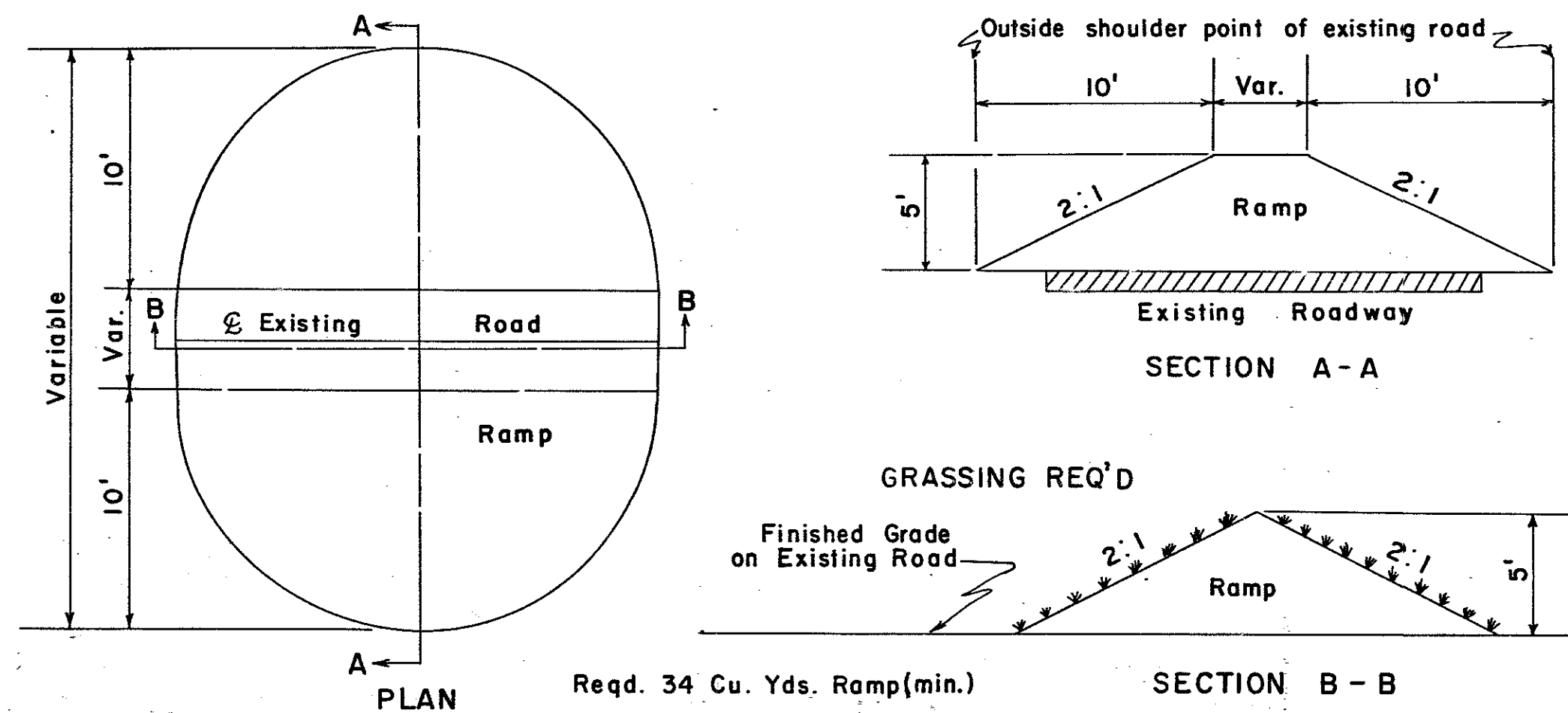
THESE DRAWINGS ALONG WITH THE MERELA CONSULTANTS CO. DESIGN CALCULATIONS CONSTITUTE THE COMPLETE SET OF RETAINING WALL DESIGN DOCUMENTS. THESE DOCUMENTS SHALL BE REVIEWED AND USED ONLY BY THOSE PARTIES DIRECTLY PARTICIPATING ON THIS PROJECT. THESE DOCUMENTS TAKE PRECEDENCE OVER ANY OTHER DOCUMENTS AND SHALL BE THE PRIMARY DOCUMENT TO DETERMINE THE RETAINING WALL DESIGN AND CONSTRUCTION. THIS DRAWING IS BEING FURNISHED FOR USE ON THIS PROJECT ONLY. ANY PARTY ACCEPTING THIS DOCUMENT DOES SO IN CONFIDENCE AND AGREES THAT IT SHALL NOT BE DUPLICATED IN WHOLE OR IN PART, NOR DISCLOSED TO OTHERS WITHOUT THE CONSENT OF MERELA CONSULTANTS CO.

DETAIL FOR PLACING ROOF DRAIN PIPE UNDER SIDEWALK



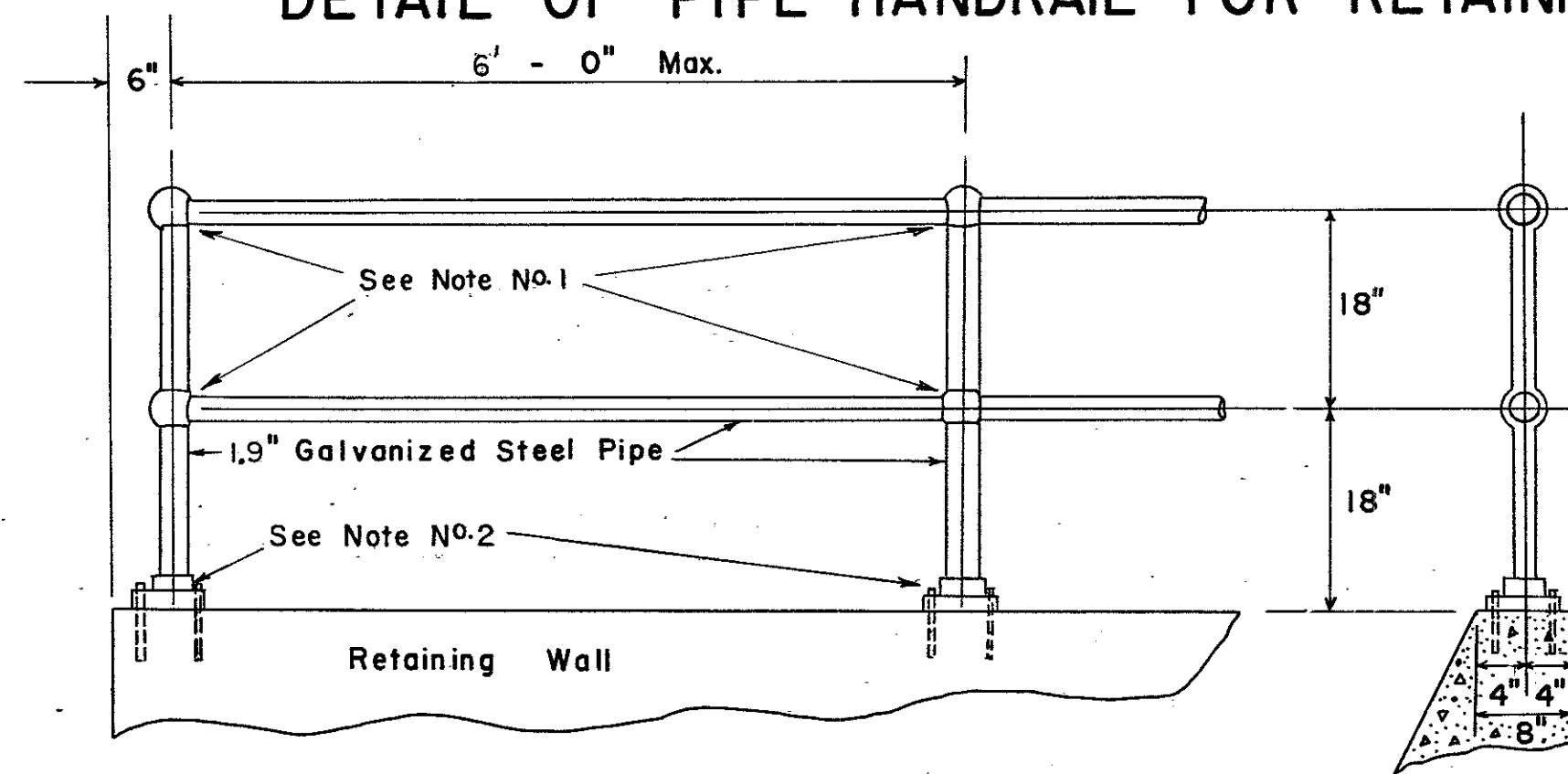
Note: Fittings other than 90° elbow may be used to satisfy other conditions.

DETAIL OF RAMP TYPE BARRICADE



NOTE: Materials and construction to be in accordance with Standard Specifications

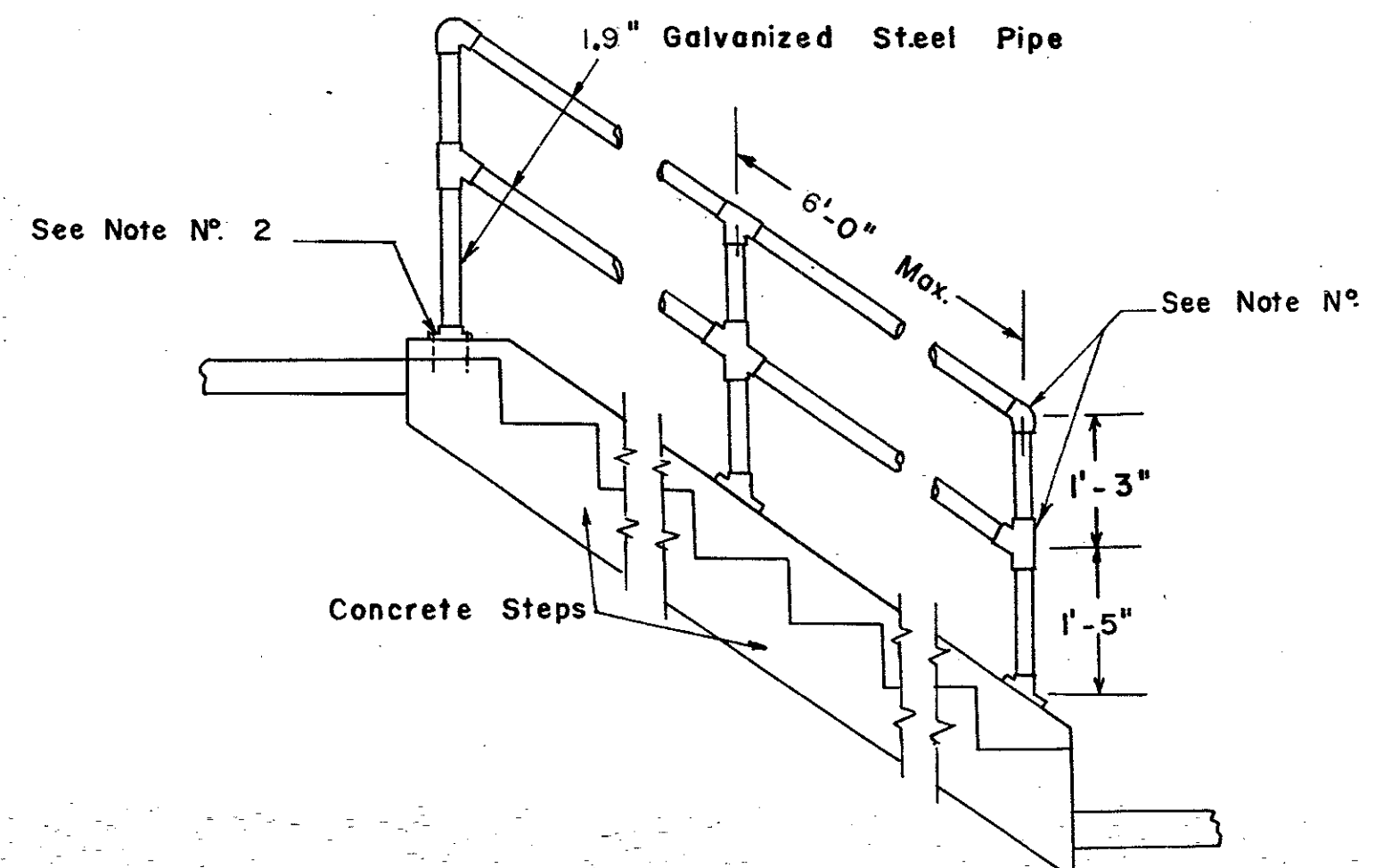
DETAIL OF PIPE HANDRAIL FOR RETAINING WALL



NOTE: If wall is long, and expansion and contraction joints are used in the wall, slip joints are to be provided for in that section of handrailing over the expansion or contraction joint. Stripping the threads in the part of the ball fittings where required to form a slip joint will be permitted.

NOTE: Pipe, pipe fittings, floor flanges and bolts shall be of an approved standard type.

DETAIL OF PIPE HANDRAIL FOR CONCRETE STEPS



NOTE: PIPE, FITTINGS, FLANGES AND BOLTS SHALL BE OF AN APPROVED STANDARD TYPE.

NOTES FOR PIPE HANDRAILING

1. JOINTS —
 - a.) Standard or Special galvanized steel or galvanized iron fittings may be used at joints (as shown).
— OR —
 - b.) Joints may be welded. If welded, all exposed joints shall be finished by grinding or filling to give a neat appearance. All damage to galvanizing shall be repaired in accordance with the Ga. Standard Specifications.
2. FOOTINGS —
 - a.) Post may be anchored with 2½" x 6½" galvanized Floor Flanges with 4-½ x 9" galvanized bolts (as shown).
— OR —
 - b.) Post may be grouted in 6" deep, 3" diam. hole. Total length of post will be 6" greater than that in details to give some useable height as if Floor Flanges were used.
3. 1.9" (galv. steel pipe) denotes O.D. for rail sections. I.D. = 1½".

R. M. U. Designated 1.9" O.D. Handrail 10-11-68	REVISIONS	DATE	DEPARTMENT OF TRANSPORTATION STATE OF GEORGIA STANDARD CONSTRUCTION DETAILS PLACING ROOF DRAIN PIPE UNDER SIDEWALK RAMP TYPE BARRICADE PIPE HANDRAIL FOR RETAINING WALL PIPE HANDRAIL FOR CONCRETE STEPS NO SCALE REVISED: FEB., 1966	NUMBER 9031R	
	BY				
	ADD. CORR. PATCH DETAIL				
	REVISIONS				
DESIGNED:			SUBMITTED STATE ROAD DESIGN ENGINEER	APPROVED 	
DRAWN: A.V.S.					STATE HIGHWAY ENGINEER
TRACED: A.V.S.					
CHECKED: R.B.S.					