



# SAFE STREETS FOR ALL (SS4A) SAFETY ACTION PLAN

## Project Fact Sheets

### June 2025

Appendix C

S Jeff Davis / Northbridge Road at Inman Road / County Line Road

Project ID: I-2852

Description

This countermeasure involves converting the intersection control type to a roundabout. The upgrade would include redesigned geometry, updated signage, and pavement markings to help reduce vehicle speeds approaching the intersection. Additional traffic calming measures—such as enhanced pedestrian crossings near the intersection—will also be implemented.

Details

Project Source	Fayette County SS4A
Total Estimated Cost	\$2.5M - \$3.5M
Jurisdiction	Fayette County

Location



Objective

Enhance safety and operational efficiency at the intersection of South Jeff Davis Drive/Northbridge Road and Inman Road in Fayette County, Georgia, by converting the existing intersection into a modern single-lane roundabout. This improvement will include revised intersection geometry, upgraded signage, and high-visibility pavement markings to reduce vehicle speeds and minimize conflict points. Additional traffic calming elements, such as enhanced pedestrian crossings near the intersection, will further support a safer environment for all roadway users, particularly pedestrians.

Sandy Creek at Ellison Road

Project ID: I-828

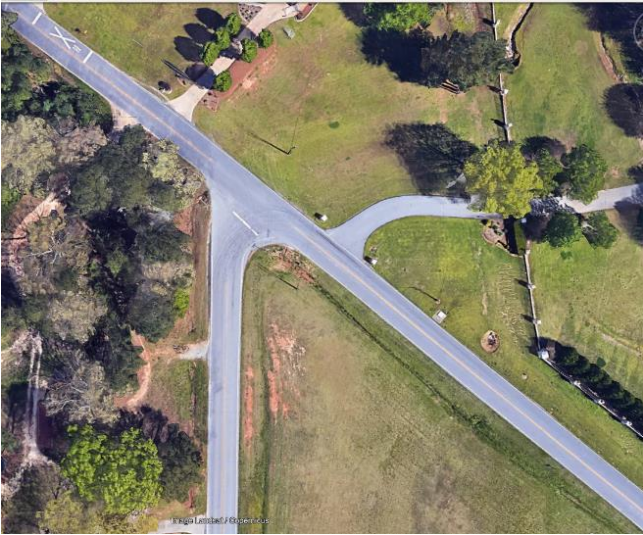
Description

This countermeasure involves converting the intersection control type to a roundabout. The upgrade would include redesigned geometry, updated signage, and pavement markings to help reduce vehicle speeds approaching the intersection. Additional traffic calming measures—such as enhanced pedestrian crossings near the intersection—will also be implemented.

Details

Project Source	Fayette County SS4A
Total Estimated Cost	\$2.5M – \$3.5M
Jurisdiction	Fayette County

Location



Objective

Enhance safety and operational efficiency at the intersection of Sandy Creek Road and Ellison Road in Fayette County, Georgia, by converting the existing intersection into a modern single-lane roundabout. This improvement will feature revised intersection geometry, upgraded signage, and high-visibility pavement markings to reduce vehicle speeds and minimize conflict points. Additional traffic calming elements, including enhanced pedestrian crossings near the intersection, will further contribute to a safer environment for all roadway users, particularly pedestrians.

Morgan Mill Rd at SR 85 Connector

Project ID: I-828

Description

This countermeasure would require:

**Short-Term:** Installation of transverse rumble strips on the minor approach and enhancing signage with a larger 48” stop sign, a wrapped post, and a flashing beacon.

**Long-Term:** If deemed feasible and necessary, convert the intersection to a roundabout with updated geometry, signage, and pavement markings to improve safety and provide traffic calming.

Details	
Project Source	Fayette County SS4A
Total Estimated Cost (Short-Term)	\$100k - \$150k
Total Estimated Cost (Long-Term)	\$2.5M - \$3.5M
Jurisdiction	Brooks

Location



Objective

Enhance safety and reduce crash risk at the intersection of Morgan Mill Road and SR 85 Connector in Fayette County, Georgia, through a phased improvement approach. In the short term, the project will increase driver awareness on the minor approach by installing transverse rumble strips, a larger 48-inch stop sign with a reflective post wrap, and a solar-powered flashing beacon. In the long term, pending further evaluation and feasibility, the intersection may be converted to a modern roundabout featuring improved geometry, updated signage, and pavement markings to provide sustainable traffic calming and long-term safety benefits for all users.



Liberty Tech Charter School to Woods Road

Project ID: N/A

Description

This countermeasure would require installation of a sidewalk along Price Road, SR 85 Connector, and Woods Road as well as pedestrian crossings.

Details

Project Source	Fayette County SS4A
Total Estimated Cost	\$650,000 – 700,000
Jurisdiction	Brooks

Location



Objective

Improve pedestrian safety and connectivity in Fayette County, Georgia, by installing sidewalks along Price Road, SR 85 Connector, and Woods Road. This project will also incorporate clearly marked pedestrian crossings to create safe and accessible routes for all pedestrians, with particular attention to the safety of students traveling to and from school. These enhancements aim to promote walkability, increase visibility, and significantly reduce the risk of pedestrian-related crashes, especially in areas with limited existing infrastructure.

SR 54 at Robinson Road Grade Separated Crossing

Project ID: C-435

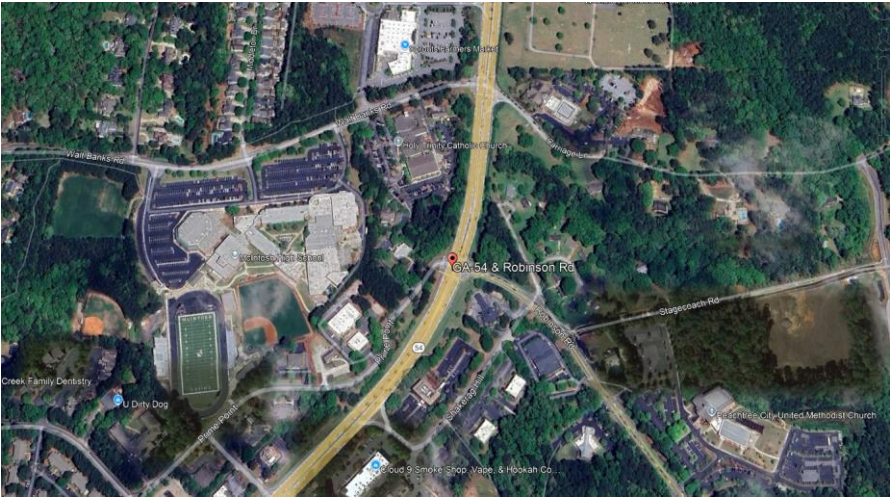
Description

This project provides a grade-separated crossing for users along a segment of the High-Injury Network (HIN), allowing multi-use path traffic to safely cross State Route 54 just south of Robinson Road without interacting with highway traffic. The primary objective is to eliminate conflict points between path users and vehicular traffic, significantly enhancing safety and connectivity. The project is currently in the 30% design phase.

Details

Project Source	Fayette County SS4A
Total Estimated Cost	\$7.15M
Jurisdiction	Peachtree City

Location



Objective

The objective of this project is to enhance safety and reduce conflicts between non-motorized users and vehicular traffic at the intersection of SR 54 and Robinson Road in Fayette County, Georgia, through the construction of a grade-separated crossing for the multi-use path. Situated along a segment of the High Injury Network (HIN), the project is designed to provide a safe, uninterrupted route for pedestrians and cyclists, removing the need for at-grade crossings. Currently in the 30% design phase, this improvement supports broader safety and mobility goals by eliminating conflict points and strengthening regional trail connectivity.



Kelly Drive/McIntosh Trail at Lake Peachtree

Project ID: I-561

Description

This project aims to enhance safety for multi-use path users at two closely spaced crossing locations along Kelly Drive/McIntosh Trail. To improve visibility and driver awareness, Rectangular Rapid Flashing Beacons (RRFBs) will be installed at each crossing. Both locations are situated within the Huddleston Elementary School zone, underscoring the importance of providing a safer environment for students and other pedestrians.

Details

Project Source	Fayette County SS4A
Total Estimated Cost	\$350,000
Jurisdiction	Peachtree City

Location



Objective

The objective of this project is to improve safety for multi-use path users and pedestrians within the school zone at two closely spaced crossings on Kelly Drive/McIntosh Trail near Lake Peachtree in Fayette County, Georgia. By installing Rectangular Rapid Flashing Beacons (RRFBs) at both locations, the project seeks to enhance driver awareness and increase yield compliance. Situated within the Huddleston Elementary School zone, these upgrades aim to create a safer and more visible crossing environment for students, cyclists, and pedestrians alike.

North Peachtree Parkway at Peninsula Drive

Project ID: C-1523

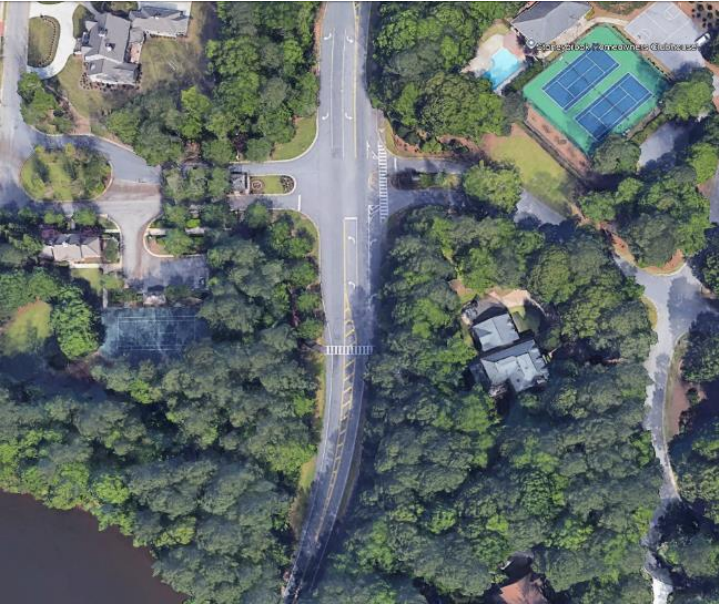

Description

This project will upgrade an existing multi-use path crossing on North Peachtree Parkway, just east of Peninsula Drive, located along a designated High Injury Network (HIN) corridor in Fayette County, Georgia. The improvements aim to enhance safety for pedestrians and cyclists by installing Rectangular Rapid Flashing Beacons (RRFBs), a concrete median pedestrian refuge island, advanced warning signage, and enhanced lighting. These measures will increase visibility, improve driver awareness, and reduce conflict points at this high-risk crossing..

Details

Project Source	Fayette County SS4A
Total Estimated Cost	\$300,000
Jurisdiction	Peachtree City

Location

Objective

The objective of this project is to improve safety and reduce conflicts between non-motorized users and vehicular traffic at the multi-use path crossing on North Peachtree Parkway, just east of Peninsula Drive in Fayette County, Georgia. By implementing Rectangular Rapid Flashing Beacons (RRFBs), a concrete median pedestrian refuge, advanced warning signage, and enhanced lighting, the project aims to increase driver awareness, enhance visibility, and provide a safer, more accessible crossing for pedestrians and cyclists along this High Injury Network corridor.



Kellsworth Way at Greencastle Road

Project ID: C-1523

Description

This project involves the installation of a Rectangular Rapid Flashing Beacon (RRFB) pedestrian crossing connecting Kellsworth Way to Greencastle Road in Tyrone, Georgia. The crossing will serve as a vital link between the existing Tyrone Path System and the surrounding neighborhoods, enhancing connectivity and access to key community destinations, including Konos Academy. By improving visibility and increasing driver awareness, the RRFB installation will provide a safer, more reliable crossing for pedestrians and cyclists, supporting the town's goals of promoting active transportation and improving safety for non-motorized users.

Details

Project Source	Fayette County SS4A
Total Estimated Cost	\$400,000
Jurisdiction	Tyrone

Location



Objective

The objective of this project is to enhance pedestrian safety and improve community connectivity by installing a Rectangular Rapid Flashing Beacon (RRFB) crossing between Kellsworth Way and Greencastle Road in Tyrone, Georgia. This crossing will provide a safer route for students walking or biking to Konos Academy, while also supporting recreational use by linking neighborhoods to the Tyrone Path System. By improving visibility and driver awareness at this key location, the project aims to reduce pedestrian-related conflicts and promote safer, more accessible travel for all users.