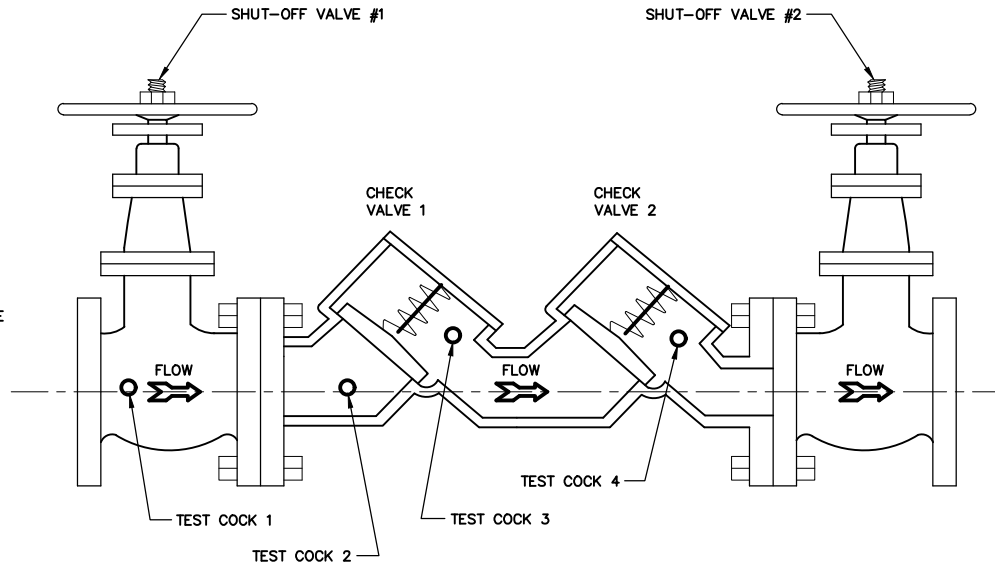


DOUBLE CHECK VALVE BACKFLOW PREVENTERS (DCV) :
 DOUBLE CHECK VALVES AND DUAL CHECK BACKFLOW PREVENTERS MAY BE USED AS PROTECTION FOR ALL PRESSURE CONNECTIONS THROUGH WHICH POLLUTANTS MIGHT ENTER THE POTABLE WATER SYSTEM IN CONCENTRATION THAT COULD CONSTITUTE A NUISANCE OR BE AESTHETICALLY OBJECTIONABLE, SUCH AS AIR, STEAM, OR OTHER MATERIALS THAT DO NOT CONSTITUTE A HEALTH HAZARD.



245 McDonough Road
 Fayetteville, GA 30214
 770.320.6020

DOUBLE CHECK VALVE BACKFLOW PREVENTERS

BFP-0001

DESIGNED: J.F.C.

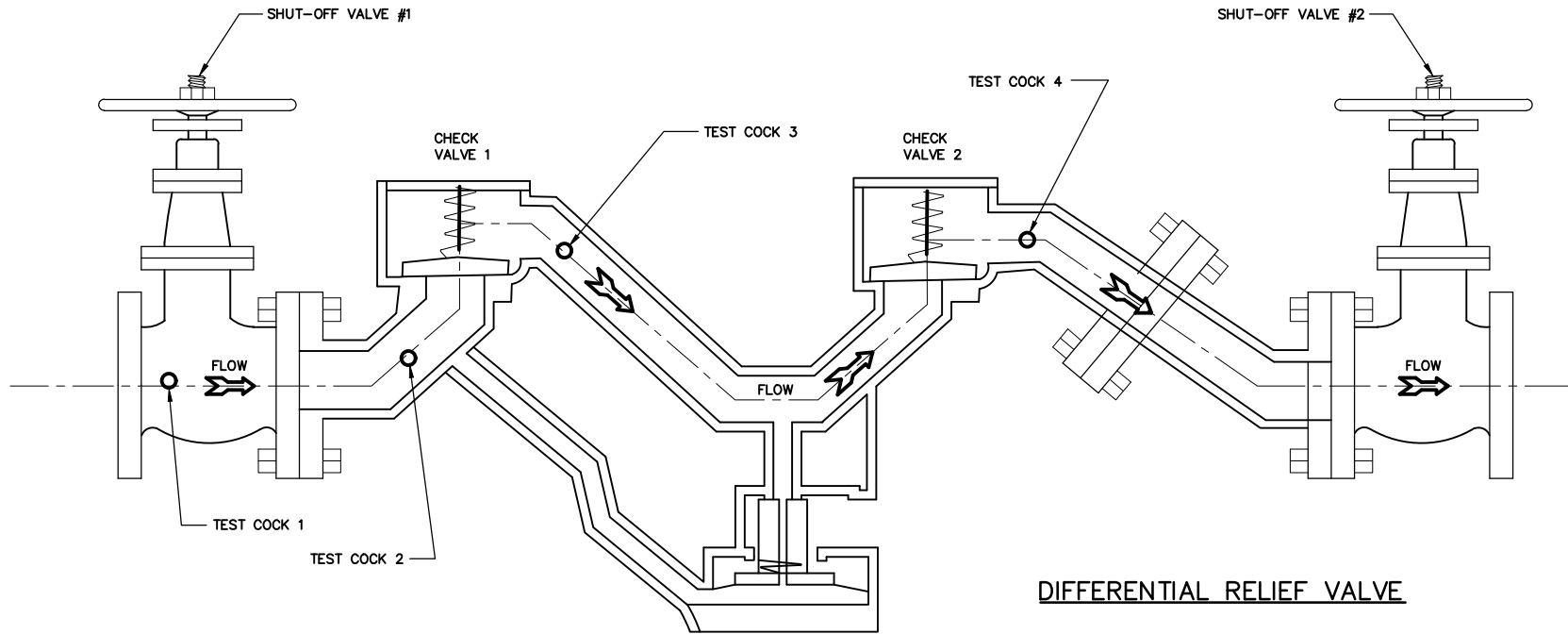
DRAWN: B.J.J.

DATE: 12/2024

SCALE: N.T.S.

BY	REVISIONS	DATE

FIG. 5
REDUCED PRESSURE ZONE BACKFLOW PREVENTERS (RPZ):
 SHALL BE USED ON ALL PRESSURE CONNECTIONS THAT
 SHALL BE SUBJECT TO BACK PRESSURE, AND WHERE THERE
 IS THE POTENTIAL FOR CONTAMINATION AND HEALTH HAZARD.



DIFFERENTIAL RELIEF VALVE



245 McDonough Road
 Fayetteville, GA 30214
 770.320.6020

REDUCED PRESSURE BACKFLOW PREVENTER

BFP-0002

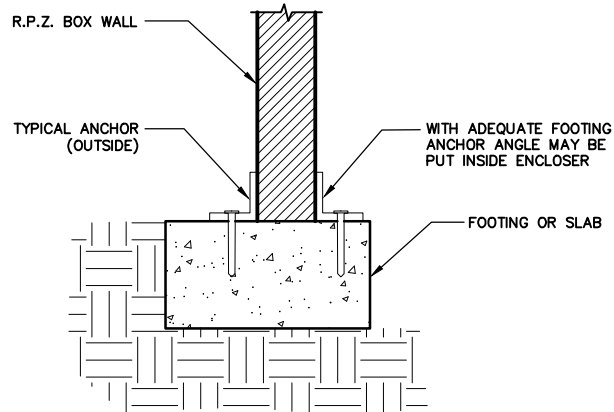
DESIGNED: J.F.C.

DRAWN: B.J.J.

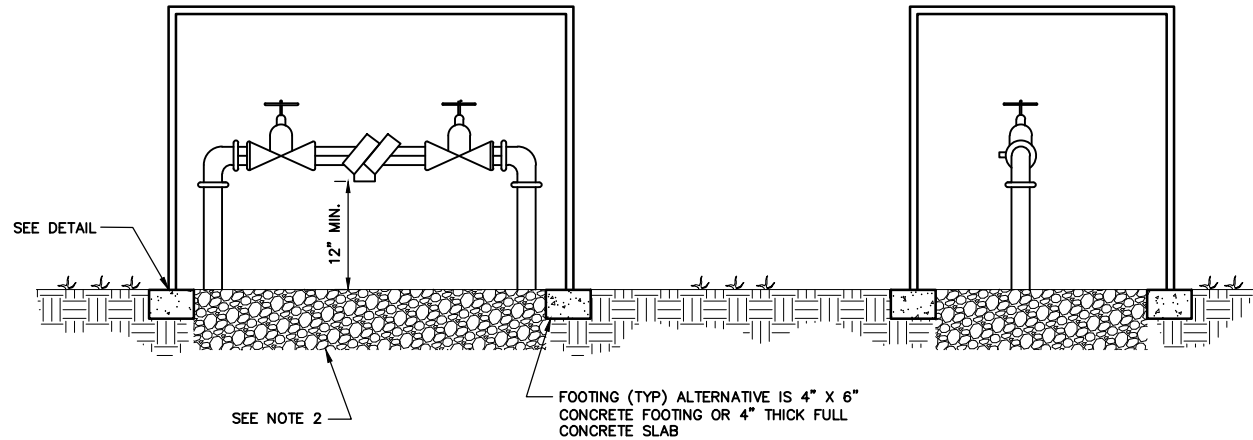
DATE: 12/2024

SCALE: N.T.S.

BY	REVISIONS	DATE



FOOTING OR CONCRETE SLAB (R.P.Z. BOX)



R.P.Z. INSTALLATION DETAIL

- NOTES:
1. BOX SHOULD BE HEATED OR INSULATED TO PROTECT FROM FREEZING.
 2. IF A PERIMETER FOOTING IS USED, THERE MUST BE GRAVEL COVERING THE ENTIRE BOTTOM OF THE ENCLOSER A FULL (12") TWELVE INCHES DEEP.



245 McDonough Road
 Fayetteville, GA 30214
 770.320.6020

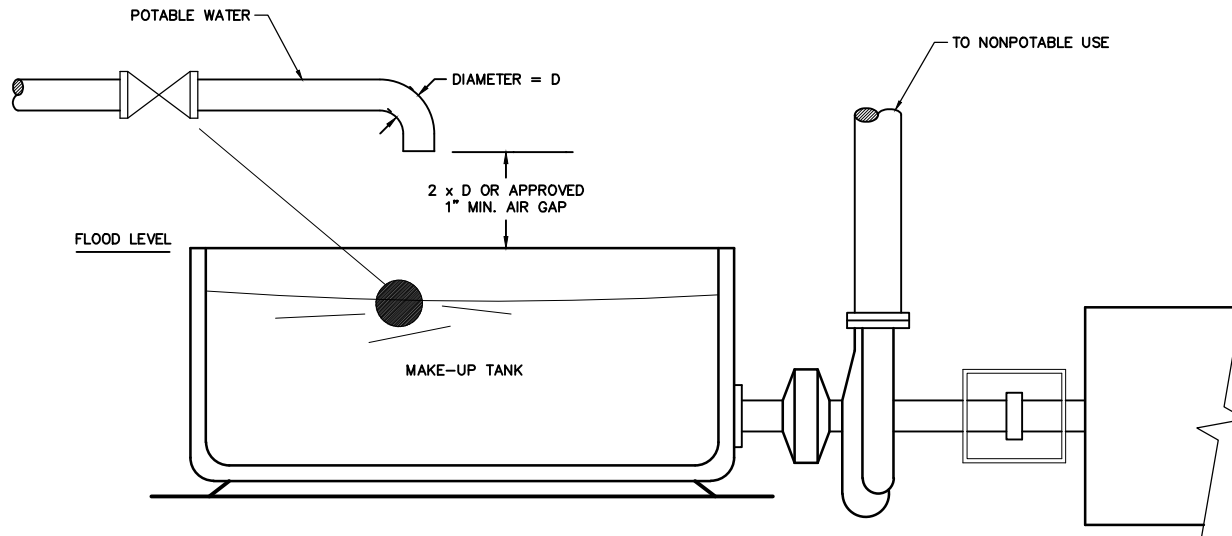
REDUCED PRESSURE ZONE ASSEMBLY INSTALLATION

BFP-0003

DESIGNED: J.F.C.	DRAWN: B.J.J.
DATE: 12/2024	SCALE: N.T.S.

BY	REVISIONS	DATE

AIR GAP (AG): THE PHYSICAL SEPERATION BY AN AIR SPACE OF THE POTABLE WATER SUPPLY AND AN OPEN VESSEL THAT CONTAINS NONPOTABLE FLUIDS. THE VERTICAL DISTANCE BETWEEN THE SUPPLY PIPE AND THE FLOOD LEVEL RIM SHOULD BE TWO TIMES THE DIAMETER OF THE SUPPLY PIPE, BUT NEVER LESS THAN 1 INCH.



245 McDonough Road
 Fayetteville, GA 30214
 770.320.6020

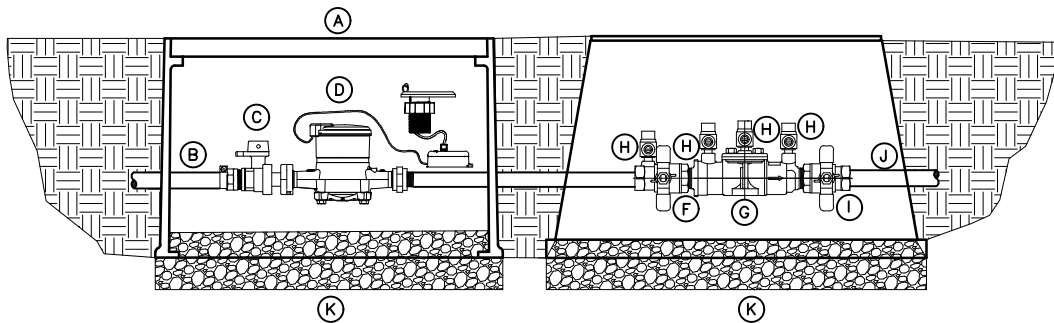
AIR GAP DETAIL

BFP-0004

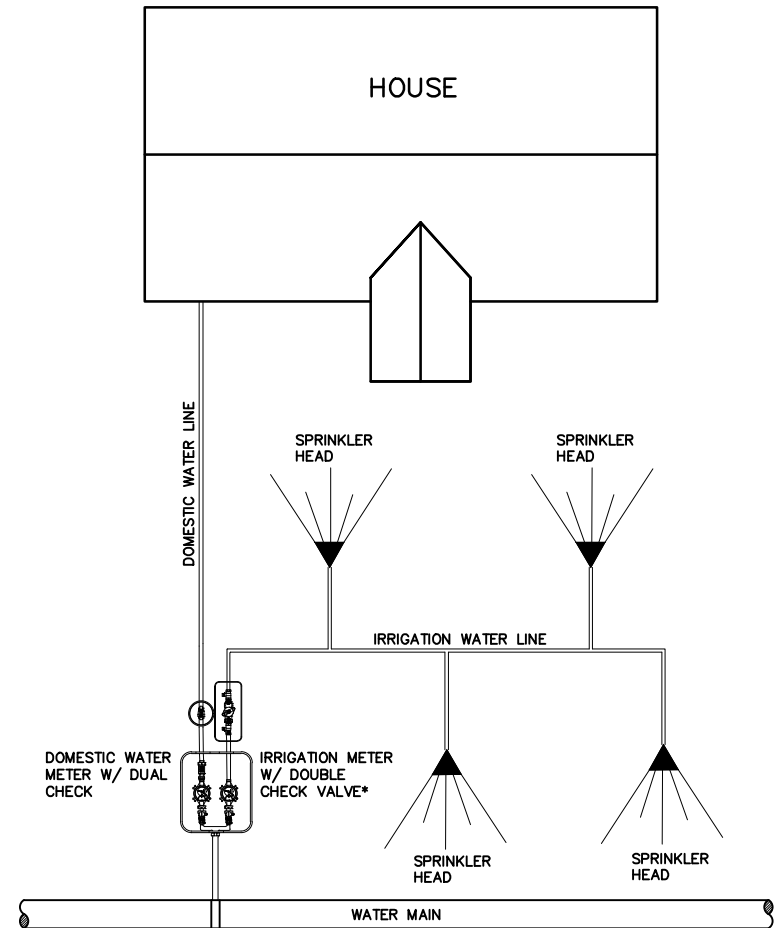
DESIGNED: J.F.C.	DRAWN: B.J.J.
DATE: 12/2024	SCALE: N.T.S.

BY	REVISIONS	DATE

IRRIGATION METER PLAN VIEW



- A. LOCATABLE POLYPROPYLENE LID AND BODY WITH TWO 2" HOLES FOR TOUCH READ CAPABILITY (DEVELOPER INSTALLED)
- B. TYPE K COPPER SERVICE LINE CONNECTION (DEVELOPER INSTALLED)
- C. CURB STOP—FORD B43-332W OR APPROVED EQUAL (DEVELOPER INSTALLED)
- D. 3/4" BADGER G2 ULTRASONIC WATER METER OR APPROVED EQUAL
- E. DUAL CHECK —WILKINS 700 IUFMX34UF OR APPROVED EQUAL
- F. 3/4" WATTS BRASS FBVSSSTH BALL VALVE W / STAINLESS STEEL "T"
- G. DOUBLE CHECK VALVE
- H. TEST COCKS
- I. 3/4" WATTS BRASS FBVSSSTH BALL VALVE W / STAINLESS STEEL "T"
- J. IRRIGATION LINE
- K. 6" MIN #57 STONE



*NOTE:
ALL BACKFLOW PREVENTERS SHALL BE TESTED BY A CERTIFIED TESTER AND PAPERWORK TURNED IN TO THE FAYETTE COUNTY WATER SYSTEM NO LATER THAT 15 DAYS AFTER INSTALLATION.



245 McDonough Road
Fayetteville, GA 30214
770.320.6020

RESIDENTIAL IRRIGATION
METER WITH BACKFLOW
PREVENTER INSTALLATION

BFP-0005

DESIGNED: J.F.C.

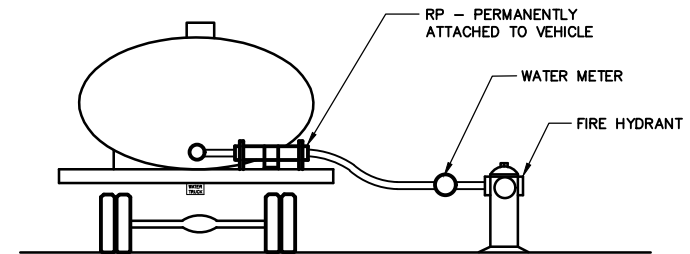
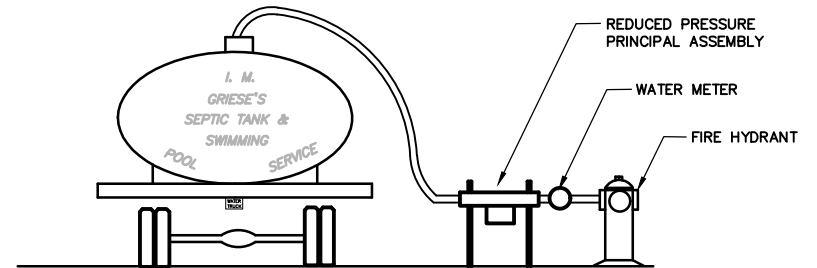
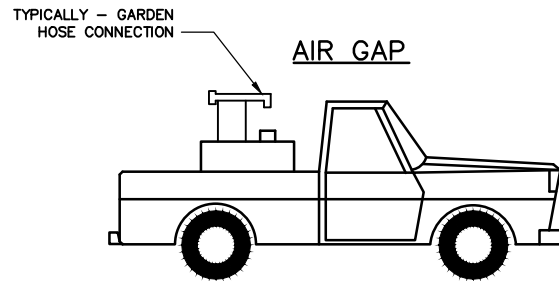
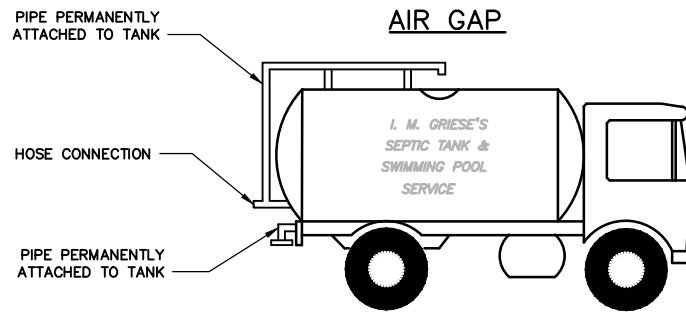
DRAWN: B.J.J.

DATE: 12/2024

SCALE: N.T.S.

BY
REVISIONS
DATE

APPROVED METHODS OF FILLING TANKS, TANKER TRUCKS, ANY WATER BEING INTRODUCED INTO A VESSEL, TANK, TANKER TRUCK ETC.; FROM ANY CONNECTION TO THE CITY OF FAIRBURN WATER DISTRIBUTION MUST BE THROUGH AN APPROVED BACKFLOW PREVENTION DEVICE. THE MOST EFFECTIVE AND ECONOMICAL METHOD IS BY AN APPROVED AIR-GAP SEPERATION BETWEEN THE WATER INLET AND OVERFLOW LEVEL OF THE VESSEL OR TANK. AT NO TIME SHALL A HOSE, EITHER HAND HELD OR OTHERWISE IMMersed IN A VESSEL OR TANK BE AN ACCEPTABLE METHOD FOR THIS TYPE APPLICATION.



NOTE:
ANYONE FOUND IN VIOLATION WILL BE PROHIBITED FROM FURTHER USE OF THE CONNECTION AND WILL BE SUBJECT TO FINE.



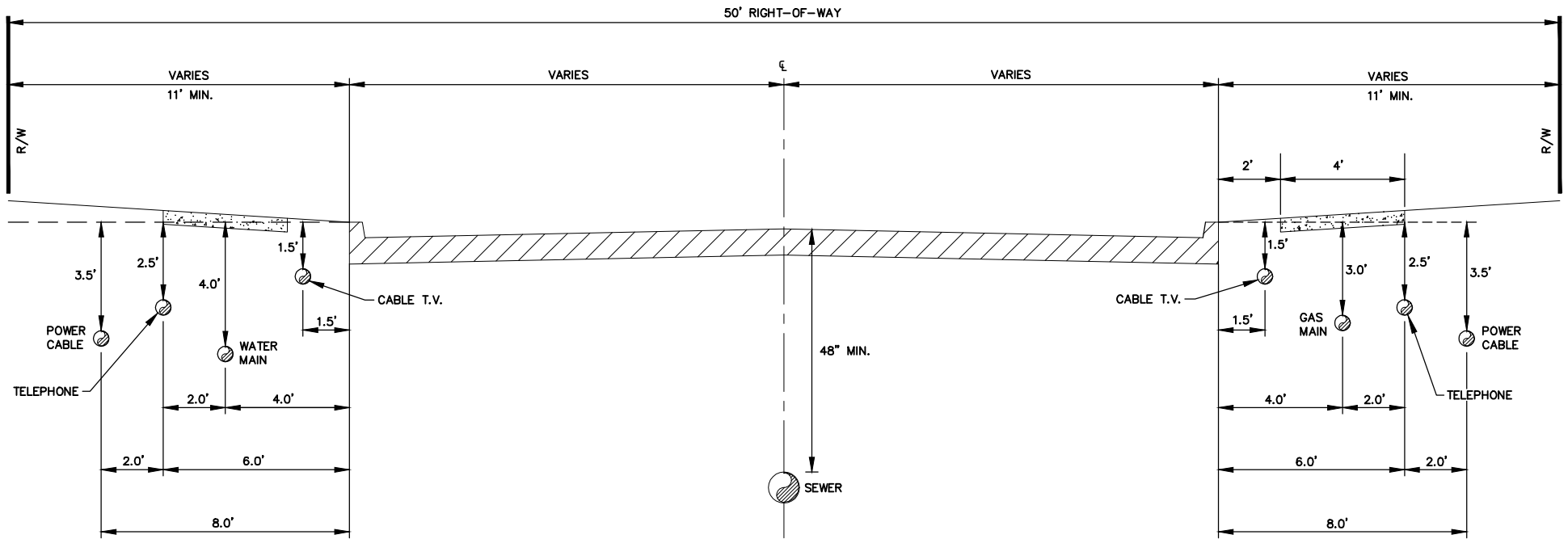
245 McDonough Road
Fayetteville, GA 30214
770.320.6020

TANK/TRUCK FILLING METHODS

BFP-0006

DESIGNED: J.F.C. DRAWN: B.J.J.
DATE: 12/2024 SCALE: N.T.S.

BY	REVISIONS	DATE



- NOTES:**
1. THIS STANDARD DETAIL IS TO BE USED FOR UTILITY LOCATIONS WITHIN RIGHT-OF-WAY OF SUBDIVISIONS ONLY.
 2. BEFORE ANY UTILITY IS INSTALLED, THE ENTIRE WIDTH OF THE RIGHT-OF-WAY SHALL BE ROUGH GRADED.
 3. IN GENERAL, THE DEEPEST UTILITIES SHOULD BE INSTALLED FIRST TO MINIMIZE ANY POSSIBLE INTERFERENCE WITH LATERALS OR SERVICE LINES.
 4. IN CUL-DE-SAC OR EYEBROW TURNAROUNDS, THE DIMENSIONS FROM THE CURB SHALL VARY. HOWEVER, THE STANDARD UTILITY SPACING SHALL BE MAINTAINED.
 5. BACKFILL OF ALL UTILITY TRENCHES CONSTRUCTED IN THE ROADWAY SHOULDER SHALL BE RETURNED TO 90% COMPACTION.
 6. EACH UTILITY SHALL BE RESPONSIBLE FOR REPAIR OF ANY DAMAGE THEY CREATE TO OTHER UTILITY LINES, OR TO THE STREET IMPROVEMENTS WITHIN THE RIGHT-OF-WAY. NO UTILITY SHALL BE RESPONSIBLE FOR DAMAGES TO ANOTHER UTILITY WHICH IS LOCATED OUTSIDE THEIR ASSIGNED SPACE.
 7. GEORGIA 811 MUST BE CONTACTED FOR UTILITY LOCATION PRIOR TO ANY DIGGING IN THE RIGHT-OF-WAY.
 8. ONCE THE ROAD BASE HAS BEEN PLACED, ALL FURTHER INSTALLATION OF UTILITIES UNDER THE ROADWAY SHALL BE BORED.



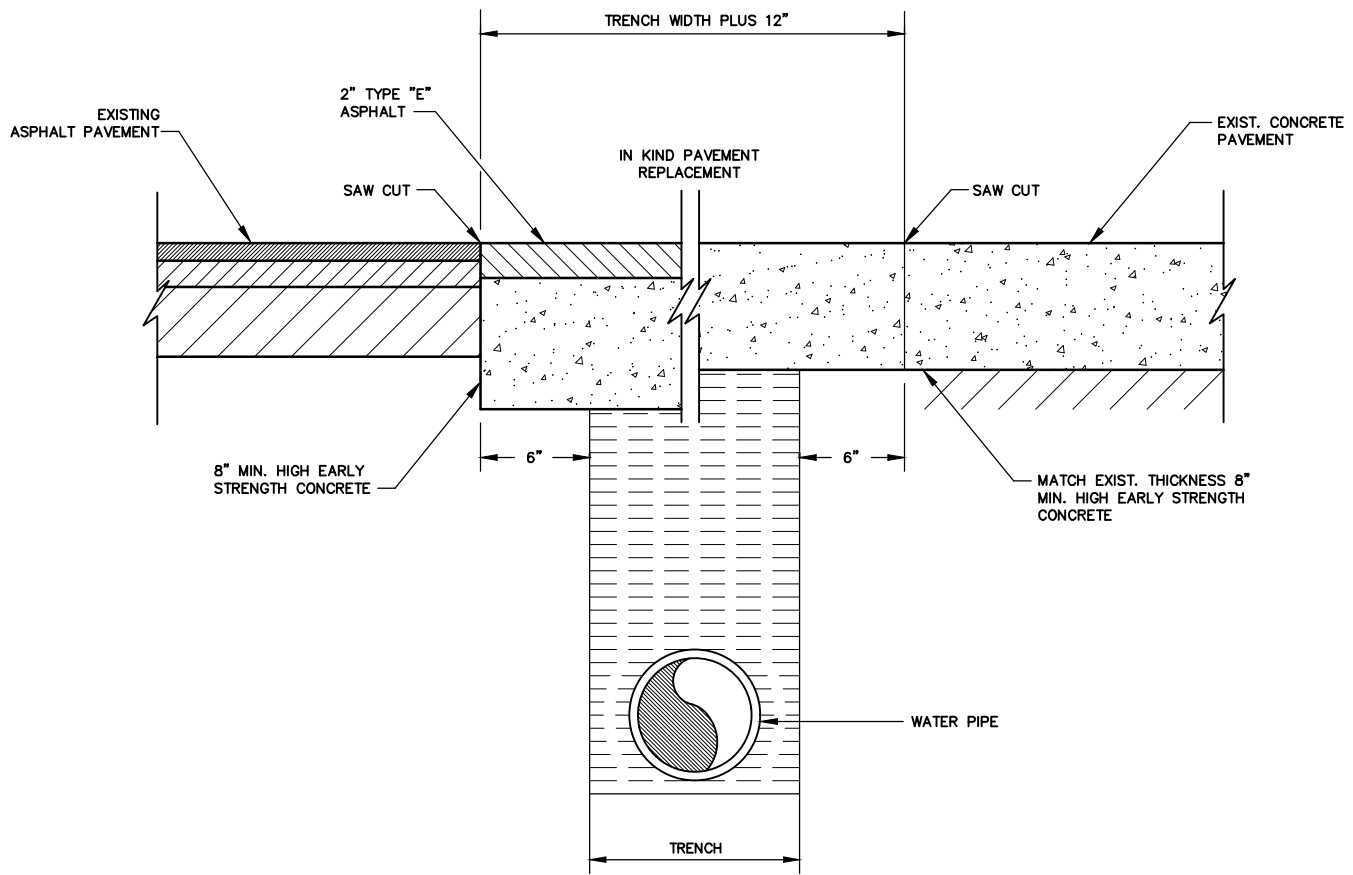
245 McDonough Road
 Fayetteville, GA 30214
 770.320.6020

UTILITY PLACEMENT

U-0001

DESIGNED: J.F.C.	DRAWN: B.J.J.
DATE: 12/2024	SCALE: N.T.S.

BY	
REVISIONS	
DATE	



NOTE:
 TRENCH TO BE BACKFILLED IN MAXIMUM 8" (LOOSE)
 LIFTS AND THOROUGHLY COMPACTED TO NOT LESS THAN
 95% STANDARD PROCTOR DENSITY AT OPTIMUM MOISTURE
 BY METHODS SATISFACTORY TO ENGINEER.



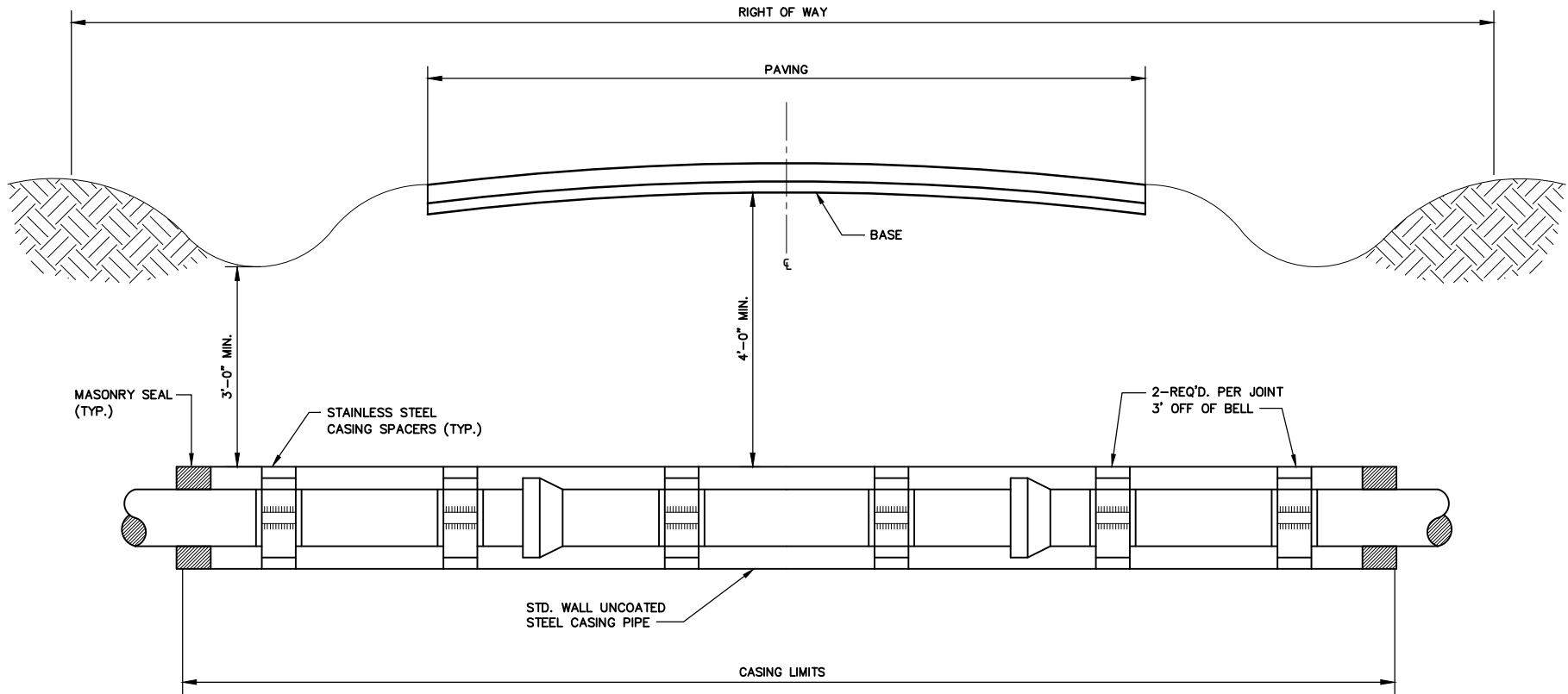
245 McDonough Road
 Fayetteville, GA 30214
 770.320.6020

TYPICAL PAVEMENT CUT

U-0002

DESIGNED: J.F.C.	DRAWN: B.J.J.
DATE: 12/2024	SCALE: N.T.S.

BY	
REVISIONS	
DATE	



NOTE:
STEEL CASING SHALL EXTEND 3' PAST ϵ OF DITCH



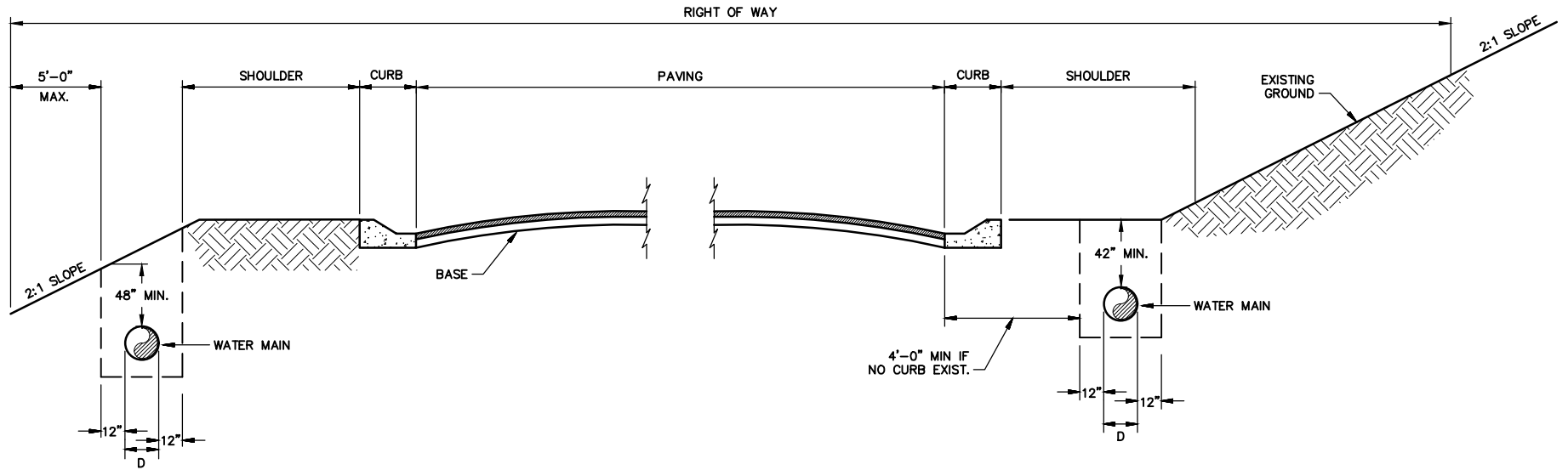
245 McDonough Road
Fayetteville, GA 30214
770.320.6020

TYPICAL ROAD CROSSING

U-0003

DESIGNED: J.F.C.	DRAWN: B.J.J.
DATE: 12/2024	SCALE: N.T.S.

BY	REVISIONS	DATE



TYPICAL RIGHT-OF-WAY INSTALLATION
N.T.S.

TYPICAL SHOULDER INSTALLATION
N.T.S.



245 McDonough Road
Fayetteville, GA 30214
770.320.6020

TYPICAL RIGHT-OF-WAY AND SHOULDER INSTALLATIONS

U-0004

DESIGNED: J.F.C.

DRAWN: B.J.J.

DATE: 12/2024

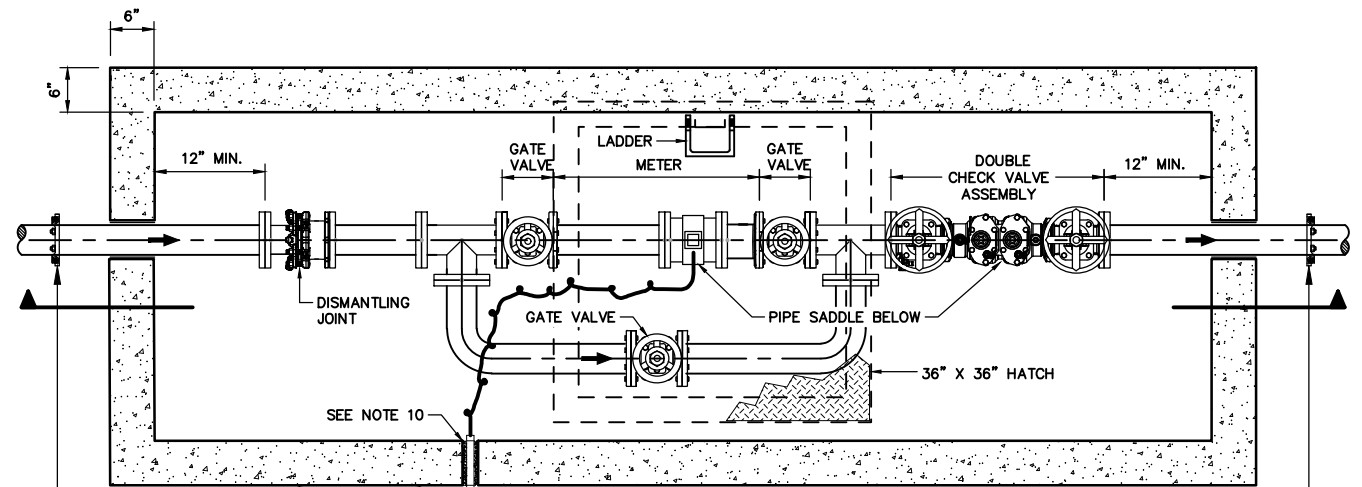
SCALE: N.T.S.

BY	REVISIONS	DATE

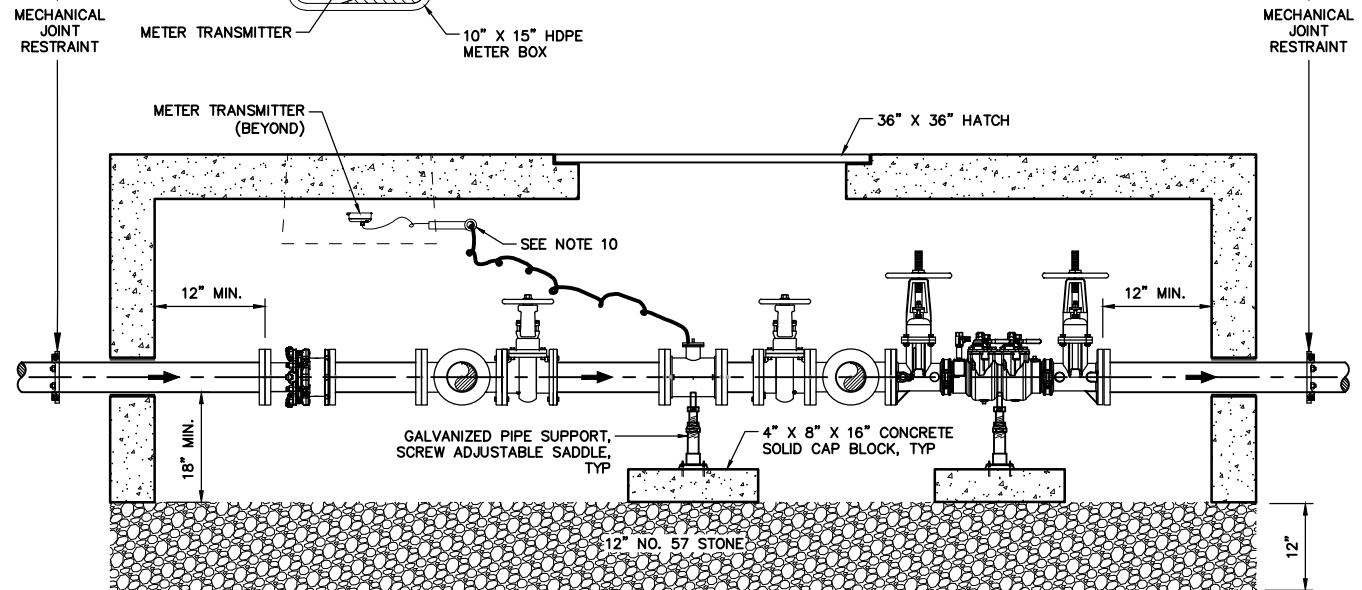
NOTES:

1. VAULT MUST BE CONSTRUCTED TO MEET ASTM C858, 'SPECIFICATION FOR UNDERGROUND PRECAST CONCRETE UTILITY STRUCTURES'. VAULTS THAT WILL BE SUBJECTED TO REGULAR TRAFFIC OF ANY TYPE, CONCENTRATED LIVE LOADS AND/OR SURFACE SURCHARGE LOADS WILL REQUIRE A DETAILED VAULT DESIGN FROM THE DEVELOPER SUBMITTED FOR FCWS APPROVAL PRIOR TO CONSTRUCTION.
2. VAULT AND LID THICKNESSES SHALL BE A MINIMUM OF 6". INSIDE HEIGHT OF VAULT SHALL BE A MINIMUM OF 6 FEET.
3. VAULT MUST BE OF SUFFICIENT SIZE TO MAINTAIN A MINIMUM 18" CLEARANCE BETWEEN INTERIOR WALLS AND METER, BACKFLOW AND BYPASS ASSEMBLIES.
4. VAULT SHALL BE PLACED ON A 12" BASE OF NO. 57 COMPACTED STONE.
5. VAULT LID SHALL BE EQUIPPED WITH A 36" X 36" ACCESS HATCH OFFSET TO ONE SIDE ALIGNED WITH INTERIOR LADDER.
6. VAULT INLET/OUTLET PENETRATIONS SHALL BE SEALED WITH NON-SHRINK GROUT.
7. ALL PIPE AND FITTINGS SHALL BE DUCTILE IRON. ALL FITTINGS SHALL BE FLANGED.
8. METER SHALL BE BADGER E-SERIES G2 ULTRASONIC METER WITH DOUBLE CHECK VALVE ASSEMBLY BACKFLOW PREVENTER.
9. PROVIDE A MINIMUM OF 10 FEET OF UNIMPEDED ACCESS TO ALL SIDES OF THE VAULT. IF THIS CANNOT BE ACHIEVED BY PLACEMENT IN THE RIGHT-OF-WAY, INCLUDE A RECORDED PERMANENT EASEMENT TO PROVIDE THE NECESSARY ACCESS.
10. NO SLEEVE REQUIRED FOR CONDUIT. PENETRATION SHALL BE SEALED WITH NON-SHRINK GROUT.

METER SIZE	BYPASS PIPE SIZE
3"	3"
4"	4"
6"	4"
8"	4"
10"	6"
12"	6"



PLAN VIEW



SECTION VIEW



245 McDonough Road
Fayetteville, GA 30214
770.320.6020

STANDARD VAULT DETAIL

W-0001

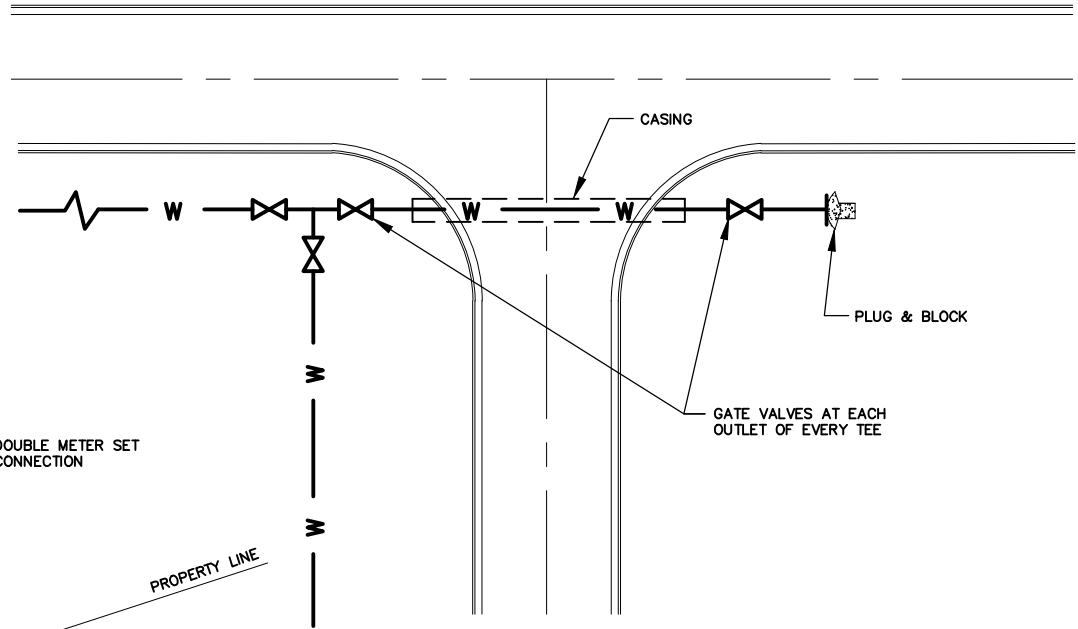
DESIGNED: J.F.C.	DRAWN: B.J.J.
DATE: 12/2024	SCALE: N.T.S.

BY	REVISIONS	DATE

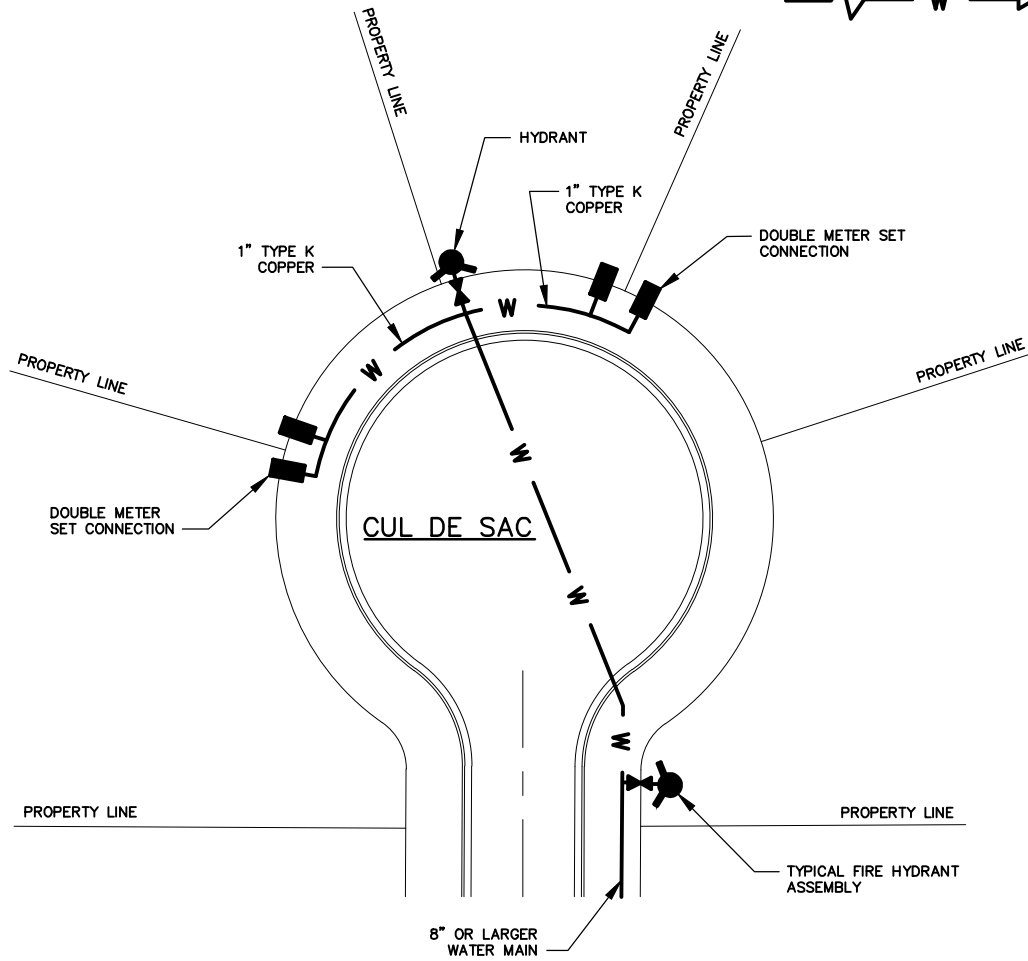
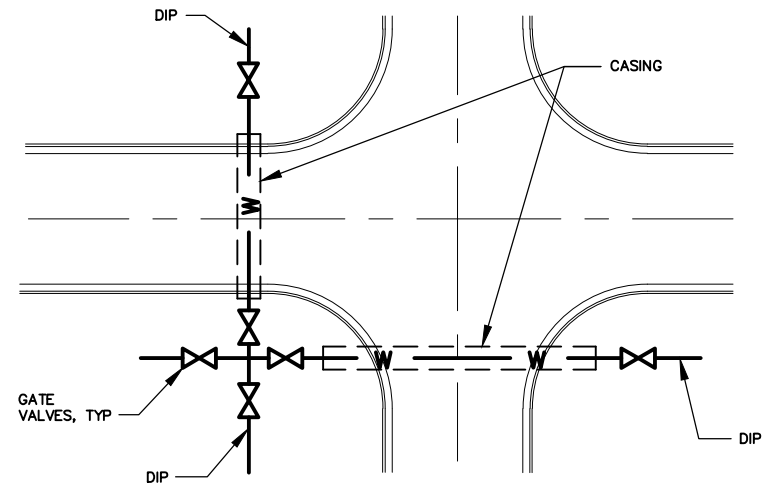
NOTES:

1. DUCTILE IRON TO EXTEND BEYOND ALL VALVES & FITTINGS (MIN 1 JOINT)
2. NO TAPS SHALL BE MADE UNDER PAVEMENT

TYPICAL STREET INTERSECTION



STANDARD VALVE LOCATIONS AT CROSS TYPE INTERSECTION



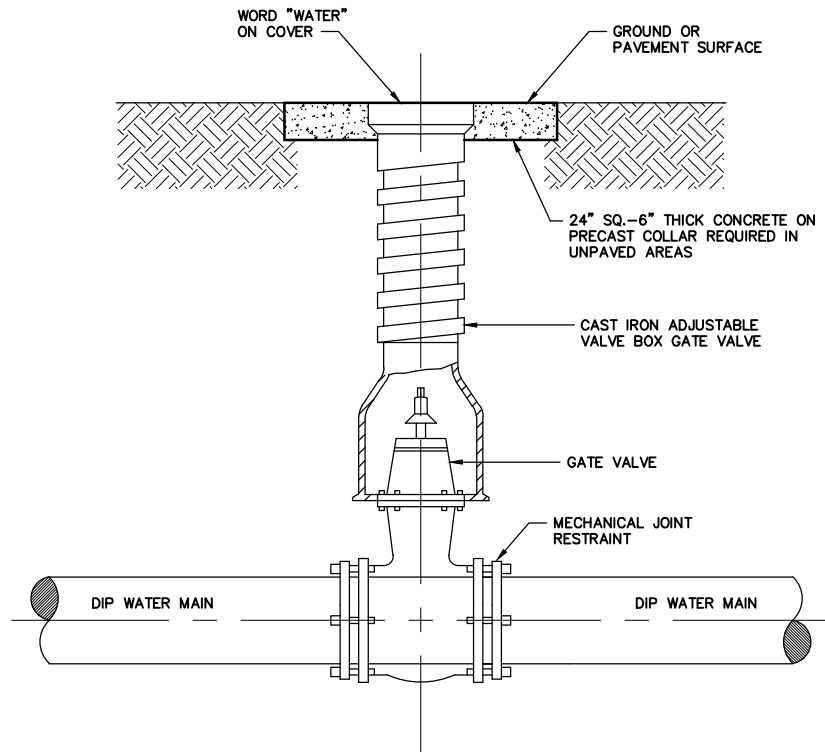
245 McDonough Road
Fayetteville, GA 30214
770.320.6020

TYPICAL STREET CROSSINGS

W-0002

DESIGNED: J.F.C. DRAWN: B.J.J.
DATE: 12/2024 SCALE: N.T.S.

BY	REVISIONS	DATE



NOTE:
 WHERE VALVE MARKERS ARE REQUIRED, INSTALL
 PRECAST REINFORCED CONCRETE SQUARE POST,
 MINIMUM 4" SQUARE AND 6 FEET LONG, ENGRAVED
 WITH WORD "VALVE" IN 2" HIGH LETTERING.



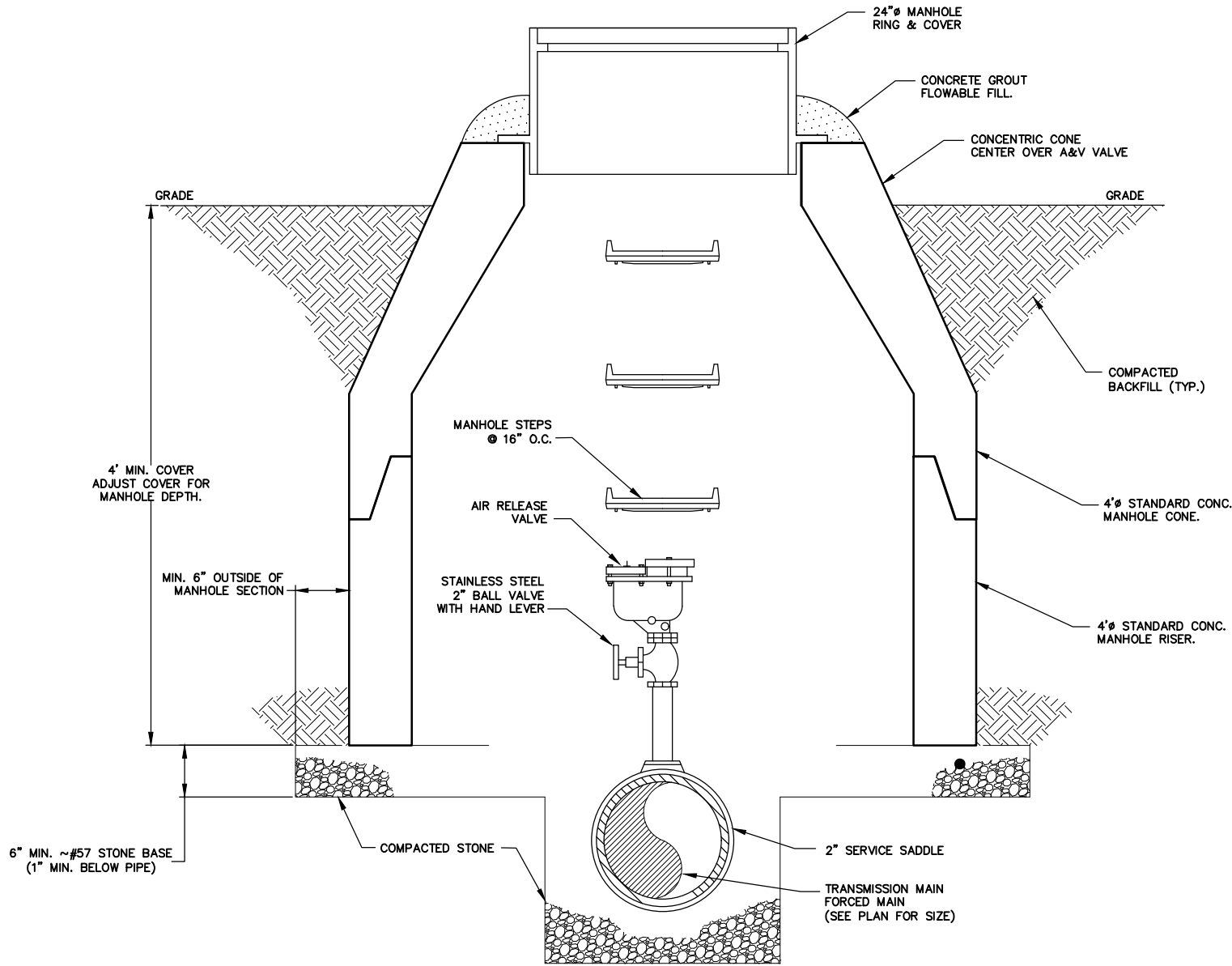
245 McDonough Road
 Fayetteville, GA 30214
 770.320.6020

WATER LINE VALVE INSTALLATION

W-0003

DESIGNED: J.F.C.	DRAWN: B.J.J.
DATE: 12/2024	SCALE: N.T.S.

BY	
REVISIONS	
DATE	



245 McDonough Road
 Fayetteville, GA 30214
 770.320.6020

AIR RELEASE VALVE DETAIL

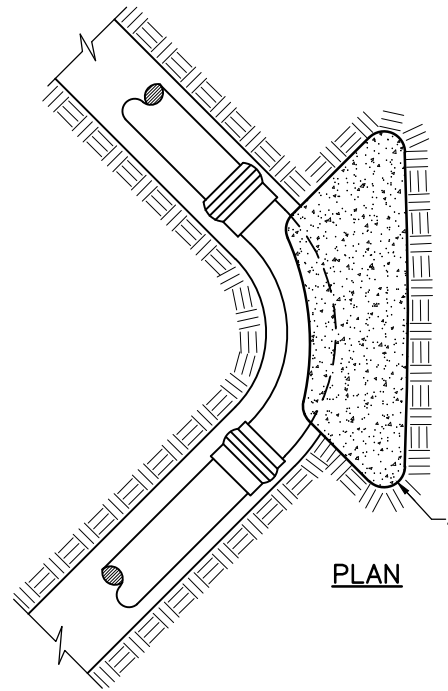
W-0004

DESIGNED: J.F.C.	DRAWN: B.J.J.
DATE: 12/2024	SCALE: N.T.S.

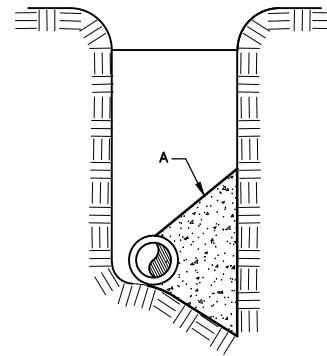
BY	
REVISIONS	
DATE	

PIPE SIZE	2"	4"	6"	8"	10"	12"	14"	16"
A*	1	1.5	3	6	9	12	16	20
B*	1	1	2	4	5	8	10	12

*CHART NO.'S ARE SQ. FT. BEARING ON UNDISTURBED MATERIAL



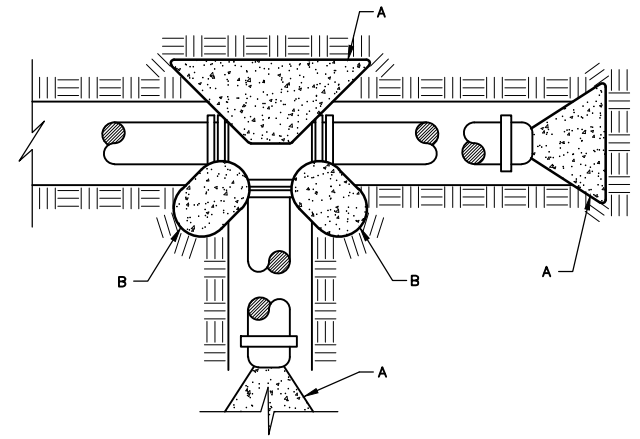
PLAN



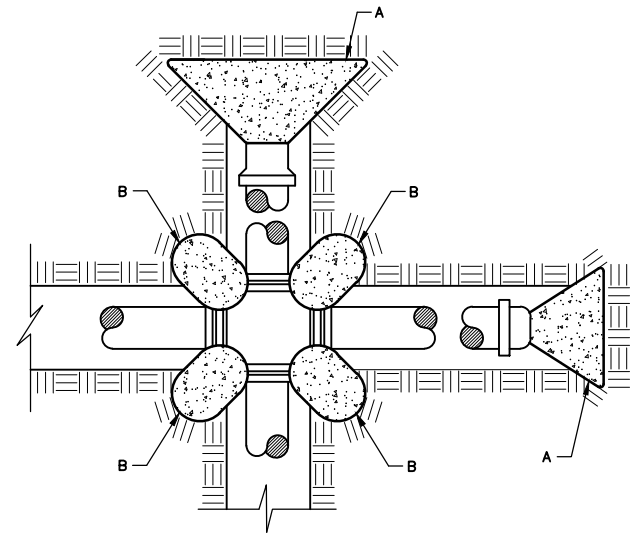
TYP. SECTION

NOTES:

1. POUR THRUST BLOCKS AGAINST UNDISTURBED MATERIAL. WHERE TRENCH WALL HAS BEEN DISTURBED, EXCAVATE LOOSE MATERIAL & EXTEND THRUST BLOCK TO UNDISTURBED MATERIAL.
2. ON BENDS & TEES, EXTEND THRUST BLOCKS FULL LENGTH OF FITTING.
3. PLACE BOARD IN FRONT OF ALL PLUGS BEFORE POURING THRUST BLOCK.
4. CONCRETE SHALL BE 3000 P.S.I.
5. BLOCKING SHALL BE CONSTRUCTED AS PER AWWA STANDARD C600-SECTION 12.3 OR LATEST REVISION.



TEE W/ 1 OR 2 PLUGS



CROSS TEE OR CROSS TEE WITH 1 OR 2 PLUGS



245 McDonough Road
Fayetteville, GA 30214
770.320.6020

THRUST BLOCK DETAIL

W-0005

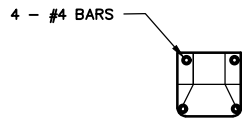
DESIGNED: J.F.C.

DRAWN: B.J.J.

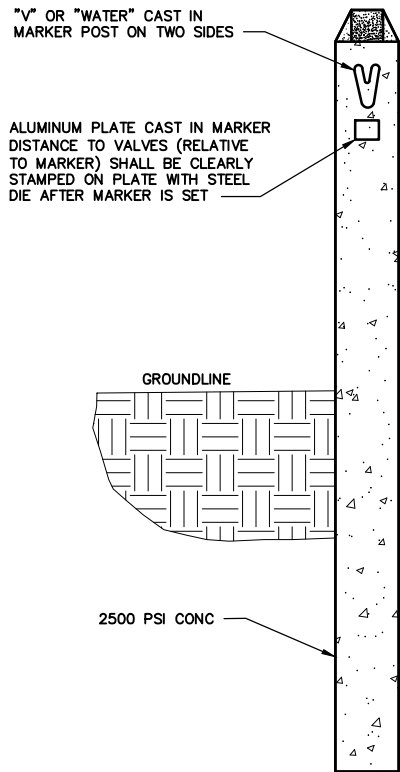
DATE: 12/2024

SCALE: N.T.S.

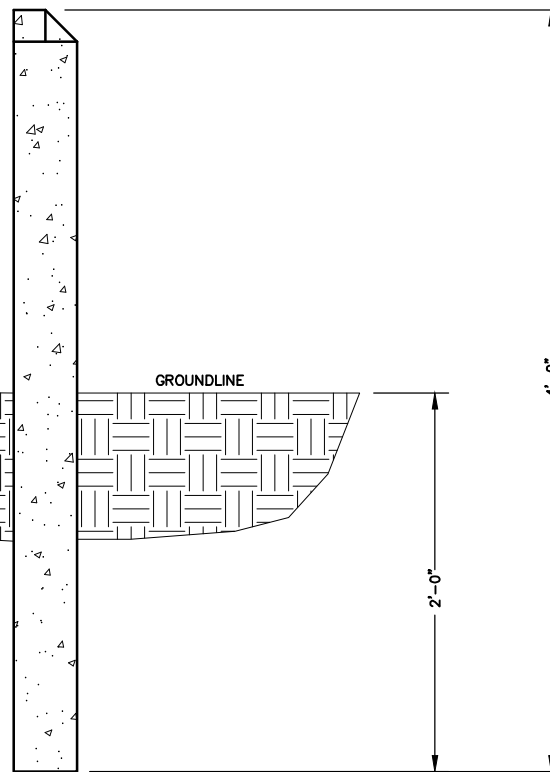
BY
REVISIONS
DATE



TOP VIEW



FRONT VIEW



SIDE VIEW

"V" OR "WATER" CAST IN MARKER POST ON TWO SIDES

ALUMINUM PLATE CAST IN MARKER DISTANCE TO VALVES (RELATIVE TO MARKER) SHALL BE CLEARLY STAMPED ON PLATE WITH STEEL DIE AFTER MARKER IS SET

2500 PSI CONC

GROUNDLINE

GROUNDLINE

2'-0"

4'-0"



245 McDonough Road
Fayetteville, GA 30214
770.320.6020

VALVE MARKER DETAIL

W-0006

DESIGNED: J.F.C.

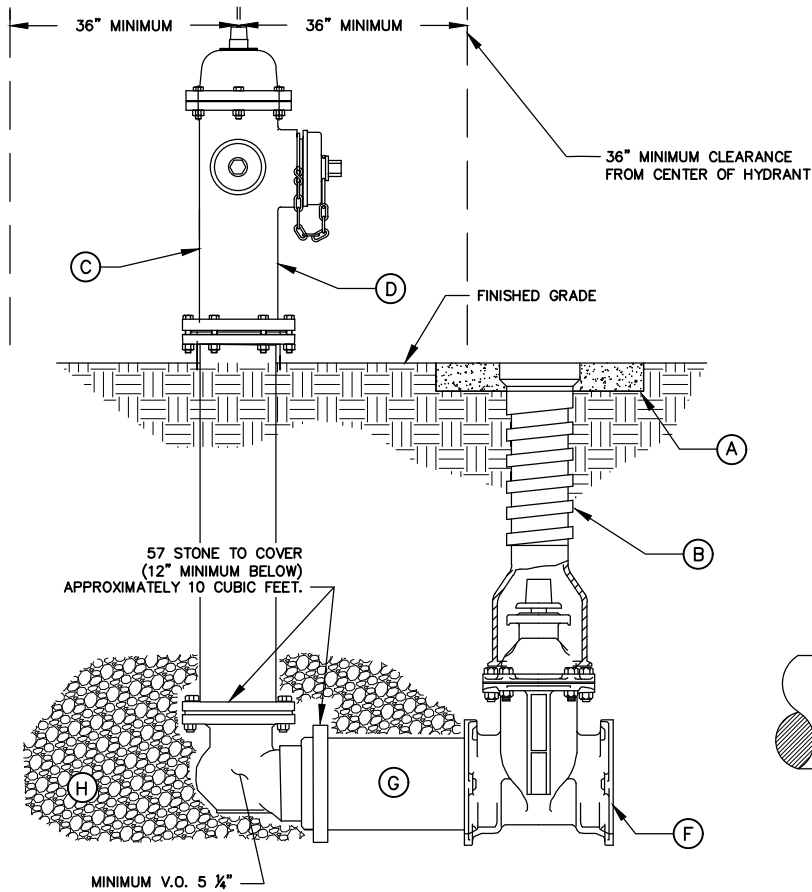
DRAWN: B.J.J.

DATE: 12/2024

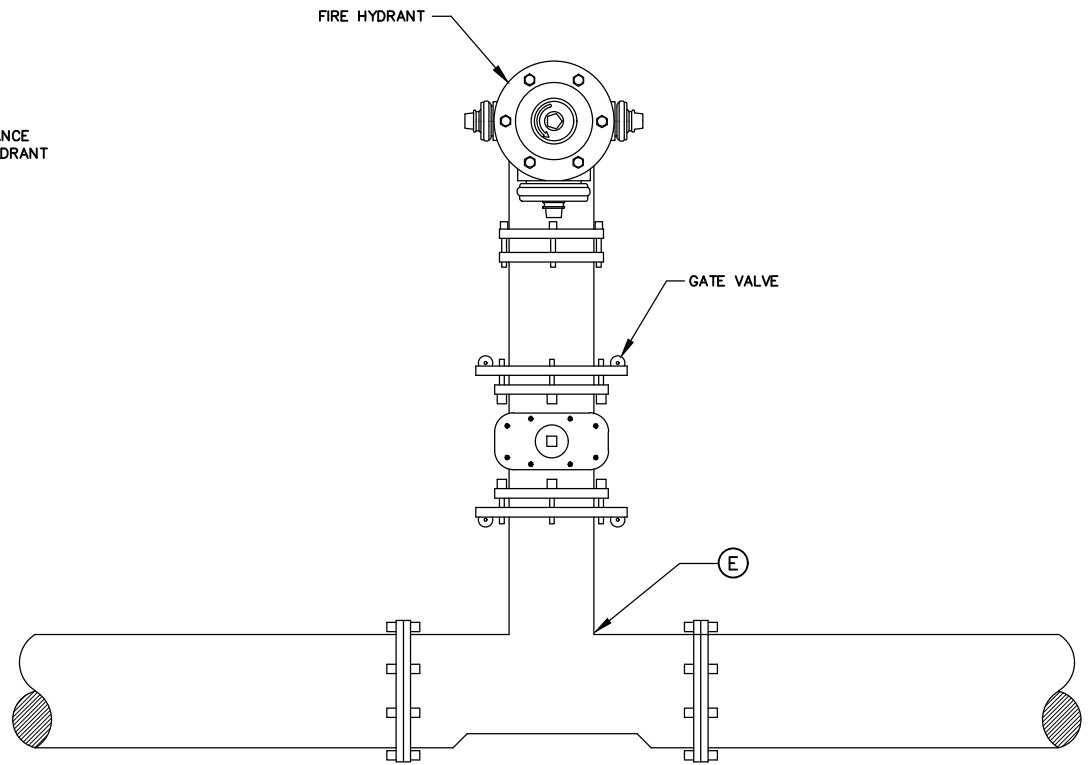
SCALE: N.T.S.

BY	REVISIONS	DATE

PROFILE VIEW



PLAN VIEW



BILL OF MATERIALS	
ITEM	DESCRIPTION
A	CONCRETE COLLAR
B	CAST IRON VALVE BOX
C	M&H 129 OR APPROVED EQUAL
D	FIRE HYDRANT (3 WAY)
E	FIRE HYDRANT TEE
F	6" GATE VALVE
G	ANCHOR COUPLING OR GRADE LOC HYDRANT ADAPTER
H	GRAVEL (14 CUBIC FT. MIN)

GENERAL NOTES:

1. STEAMER CONNECTION TO FACE STREET
2. HYDRANT SET AS CLOSE TO R/W AS PRACTICAL
3. VALVE BOX ADJUSTED TO GRADE
4. CONC. COLLAR AROUND VALVE BOX
5. F.H. ADJUSTED TO GRADE WITH GRADE LOK ANCHOR COUPLING, OR APPROVED EQUAL



245 McDonough Road
Fayetteville, GA 30214
770.320.6020

**TYPICAL FIRE HYDRANT
INSTALLATION**

W-0007

DESIGNED: J.F.C.

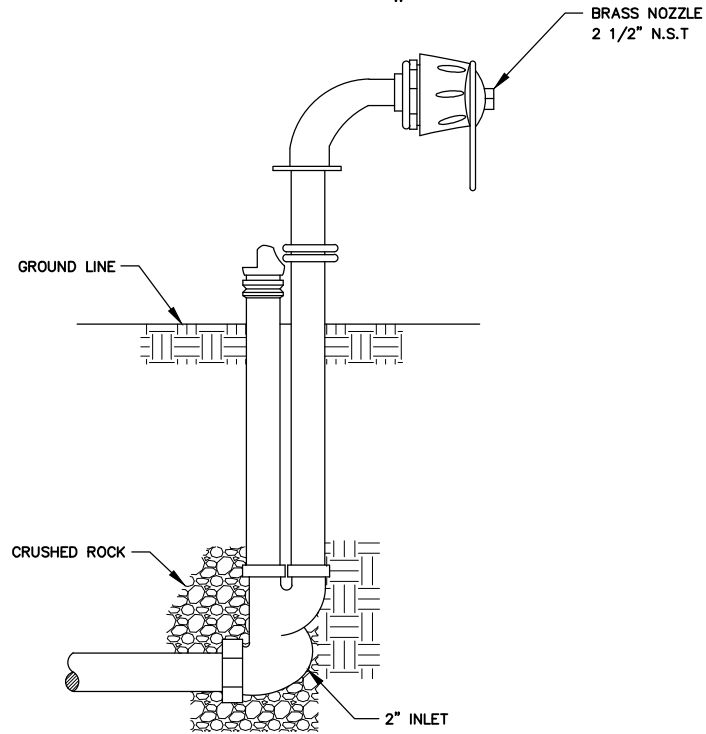
DRAWN: B.J.J.

DATE: 12/2024

SCALE: N.T.S.

BY	REVISIONS	DATE

MAINGAURD MODEL # 77



245 McDonough Road
 Fayetteville, GA 30214
 770.320.6020

APPROVED FLUSHING
 HYDRANTS

W-0008

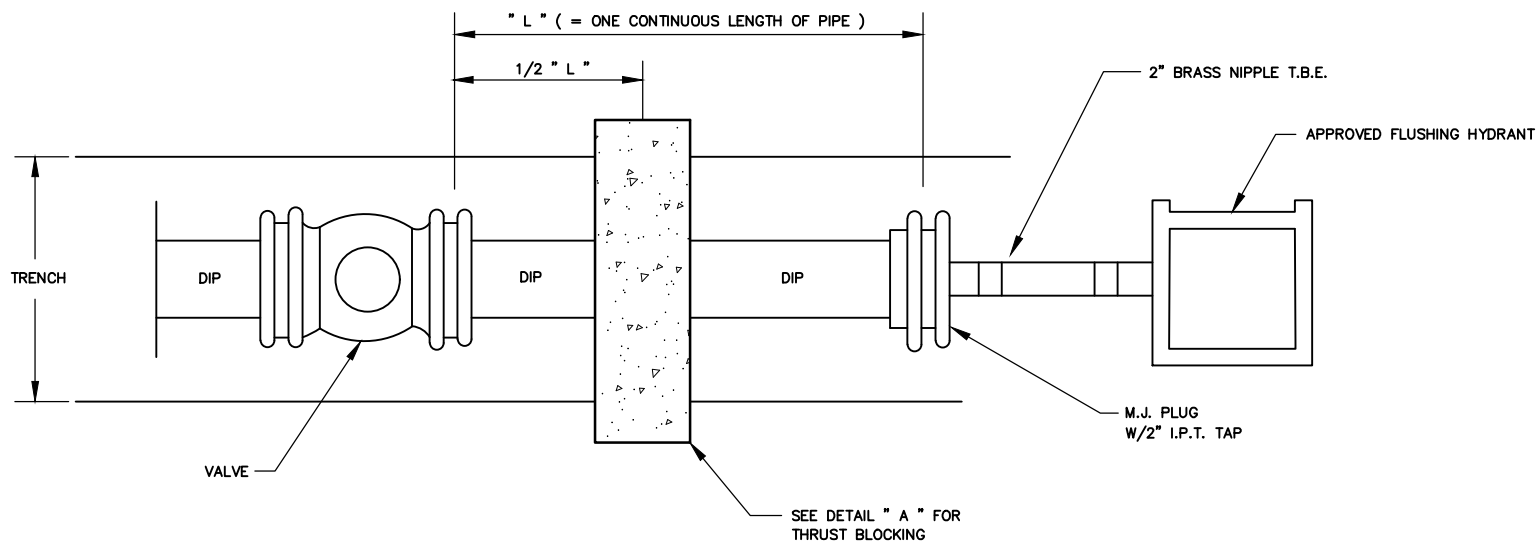
DESIGNED: J.F.C.

DRAWN: B.J.J.

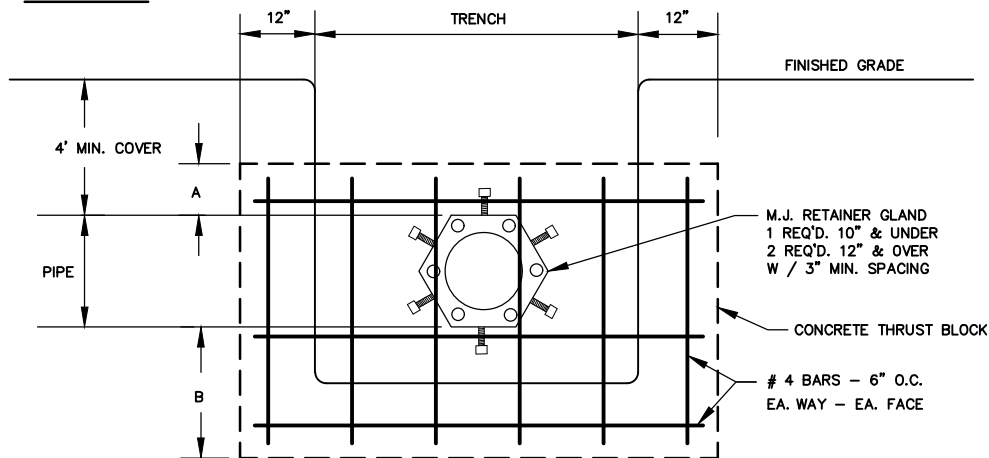
DATE: 12/2024

SCALE: N.T.S.

BY	REVISIONS	DATE



DETAIL A



DIA.	" A "	" B "
20"	2' - 0"	2' - 0"
16"	1' - 6"	2' - 0"
14"	1' - 6"	2' - 0"
12"	1' - 6"	2' - 0"
10"	1' - 0"	2' - 0"
8"	1' - 0"	2' - 0"
6"	1' - 0"	2' - 0"
4"	1' - 0"	2' - 0"

NOTE:
THE ABOVE FIGURES ARE BASED ON SOIL
BEARING CAPACITY OF 2000"/S.F.



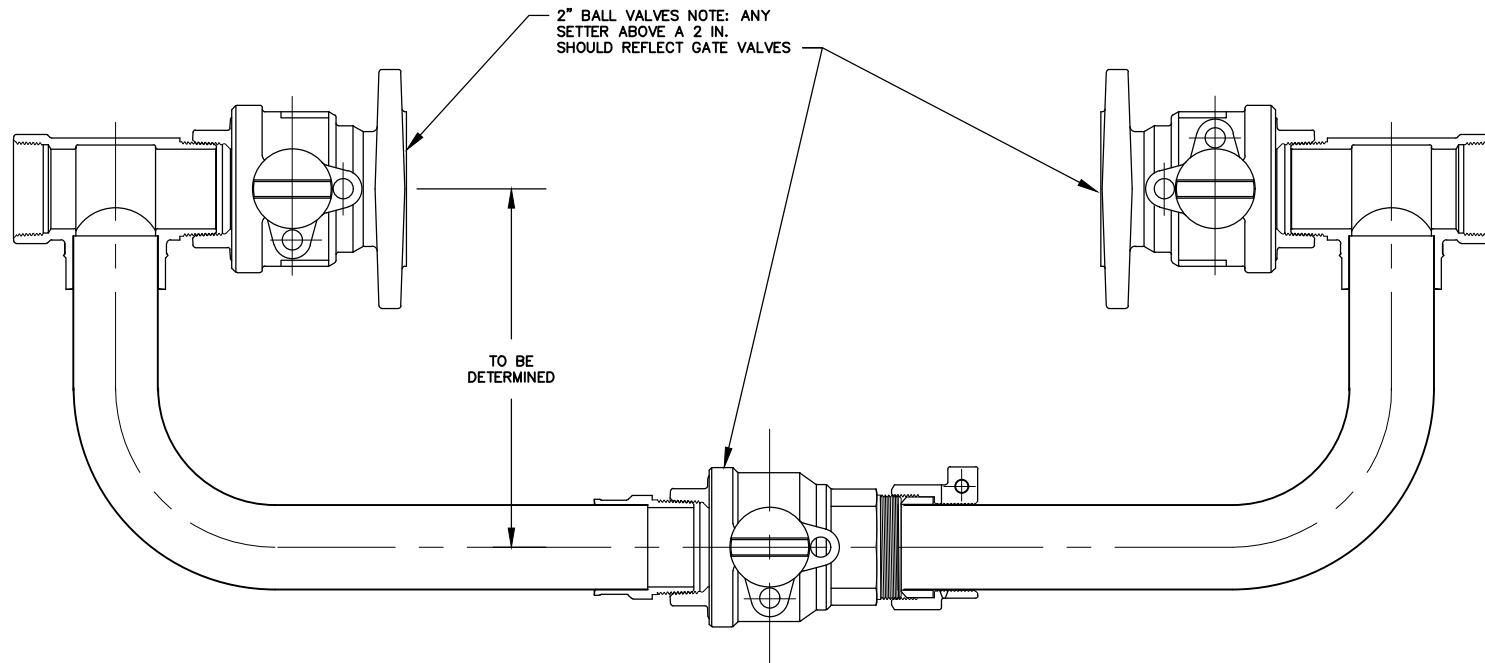
245 McDonough Road
Fayetteville, GA 30214
770.320.6020

TERMINAL END DETAIL

W-0009

DESIGNED: J.F.C. DRAWN: B.J.J.
DATE: 12/2024 SCALE: N.T.S.

BY	
REVISIONS	
DATE	



245 McDonough Road
 Fayetteville, GA 30214
 770.320.6020

BYPASS LINE ASSEMBLY

W-0010

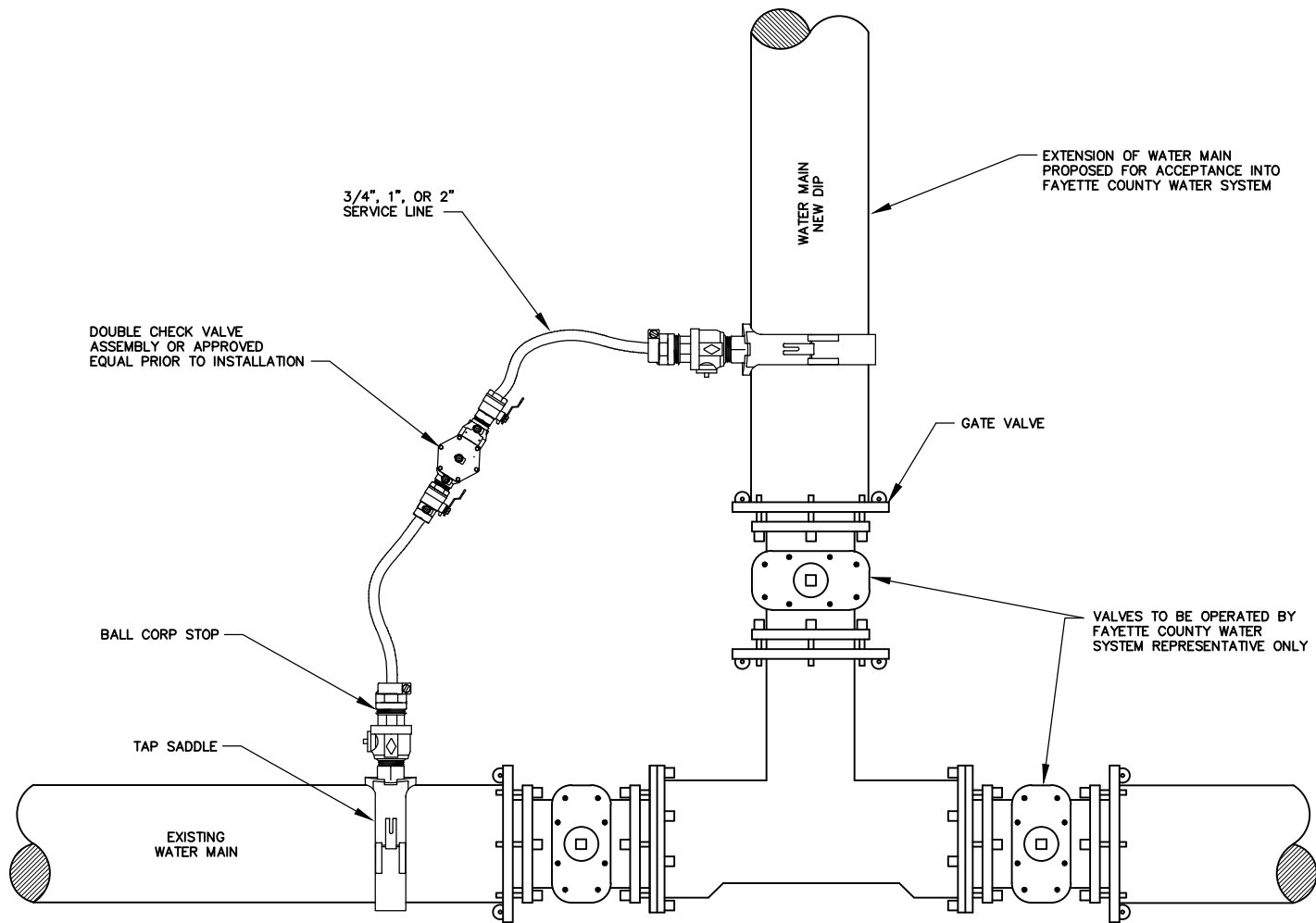
DESIGNED: J.F.C.

DRAWN: B.J.J.

DATE: 12/2024

SCALE: N.T.S.

BY	REVISIONS	DATE



245 McDonough Road
 Fayetteville, GA 30214
 770.320.6020

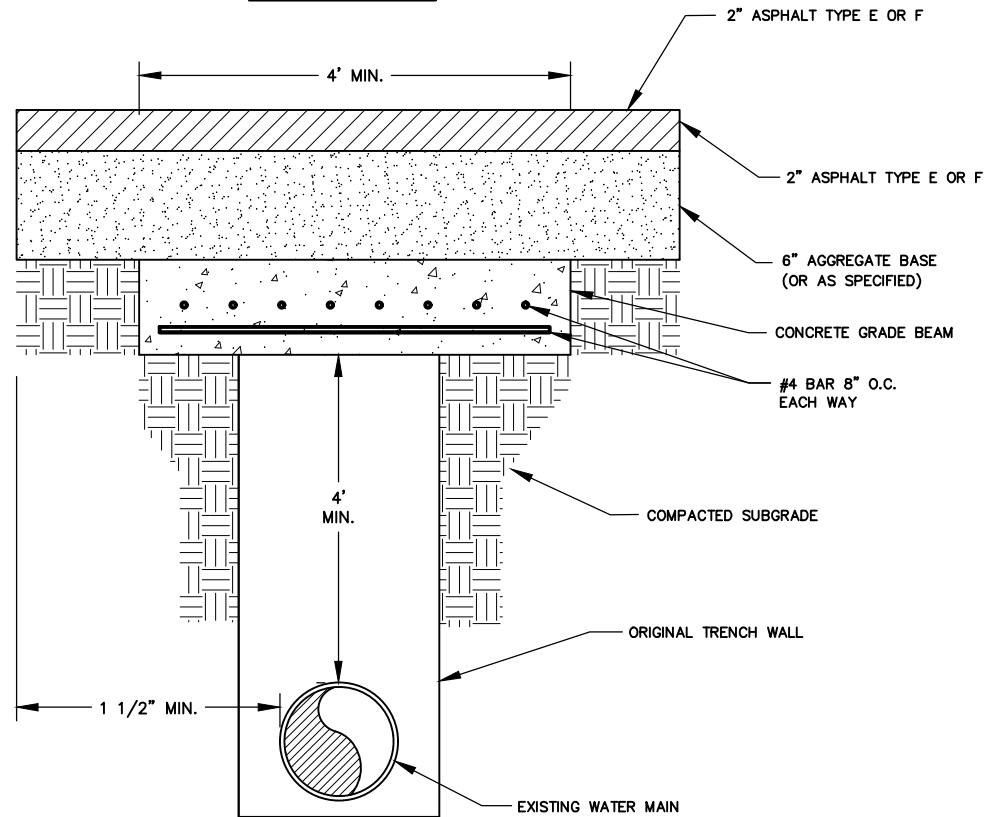
APPROVED METHOD FOR FILLING NEW WATER MAINS

W-0011

DESIGNED: J.F.C.	DRAWN: B.J.J.
DATE: 12/2024	SCALE: N.T.S.

BY	REVISIONS	DATE

PROFILE VIEW



NOTE:
THIS DETAILS APPLICATION USED FOR
WATER MAIN PROTECTION FOR ROADS
CONSTRUCTED OVER EXISTING WATER MAINS



245 McDonough Road
Fayetteville, GA 30214
770.320.6020

CONCRETE GRADE BEAM
DETAIL

W-0012

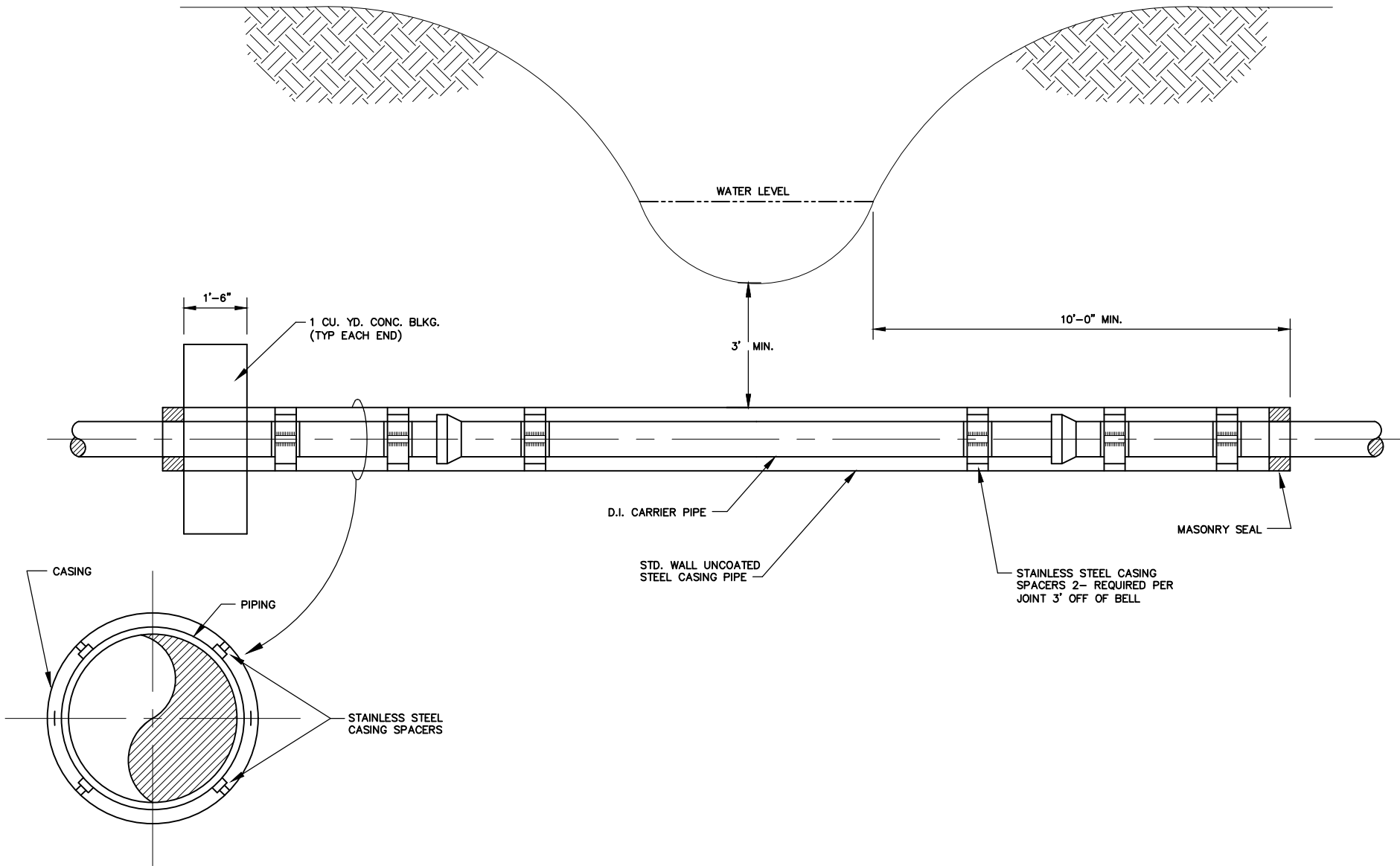
DESIGNED: J.F.C.

DRAWN: B.J.J.

DATE: 12/2024

SCALE: N.T.S.

BY	REVISIONS	DATE



245 McDonough Road
 Fayetteville, GA 30214
 770.320.6020

TYPICAL CREEK CROSSING

W-0013

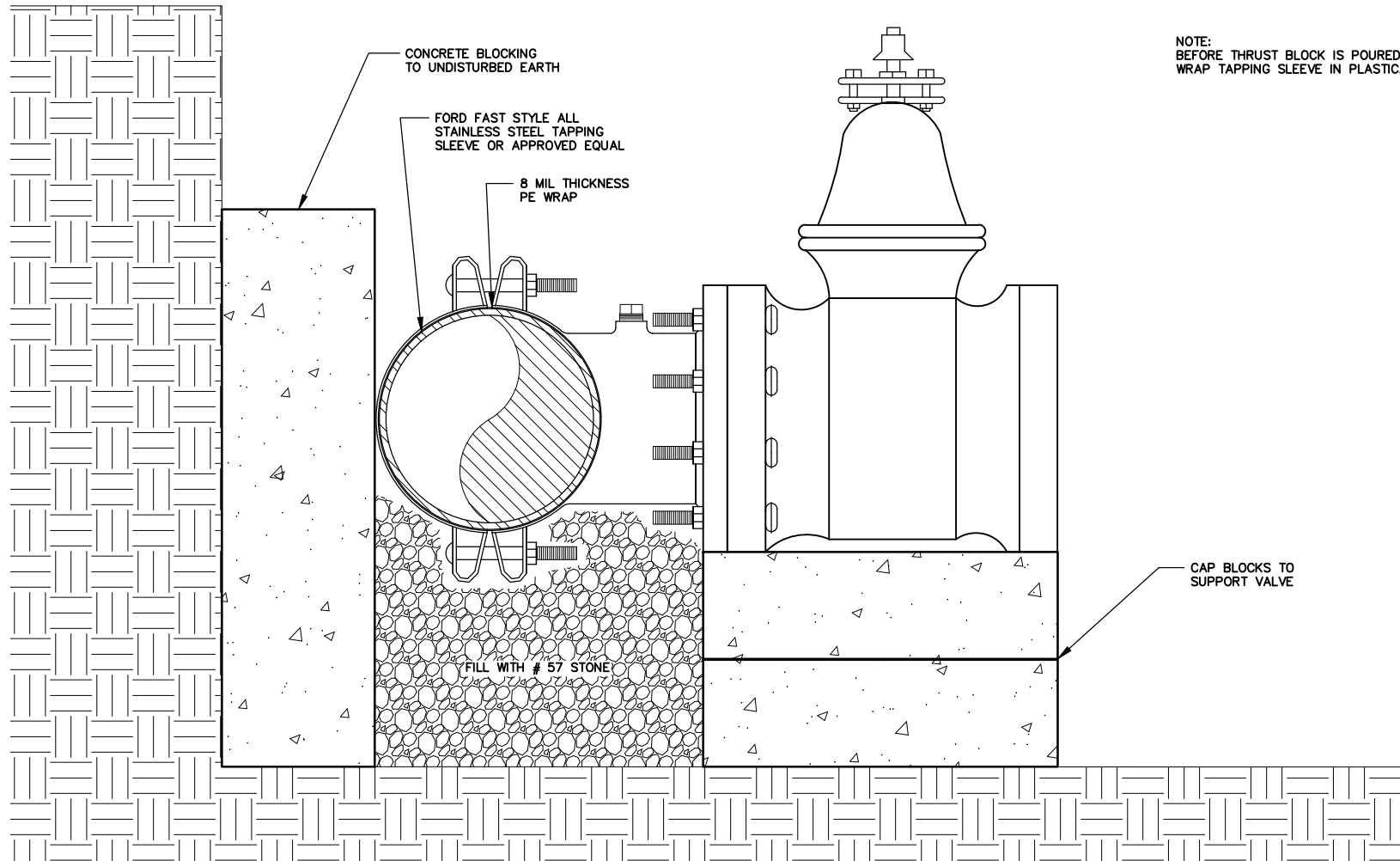
DESIGNED: J.F.C.

DRAWN: B.J.J.

DATE: 12/2024

SCALE: N.T.S.

BY	REVISIONS	DATE



245 McDonough Road
 Fayetteville, GA 30214
 770.320.6020

WATER LINE VALVE TAPPING SLEEVE

W-0014

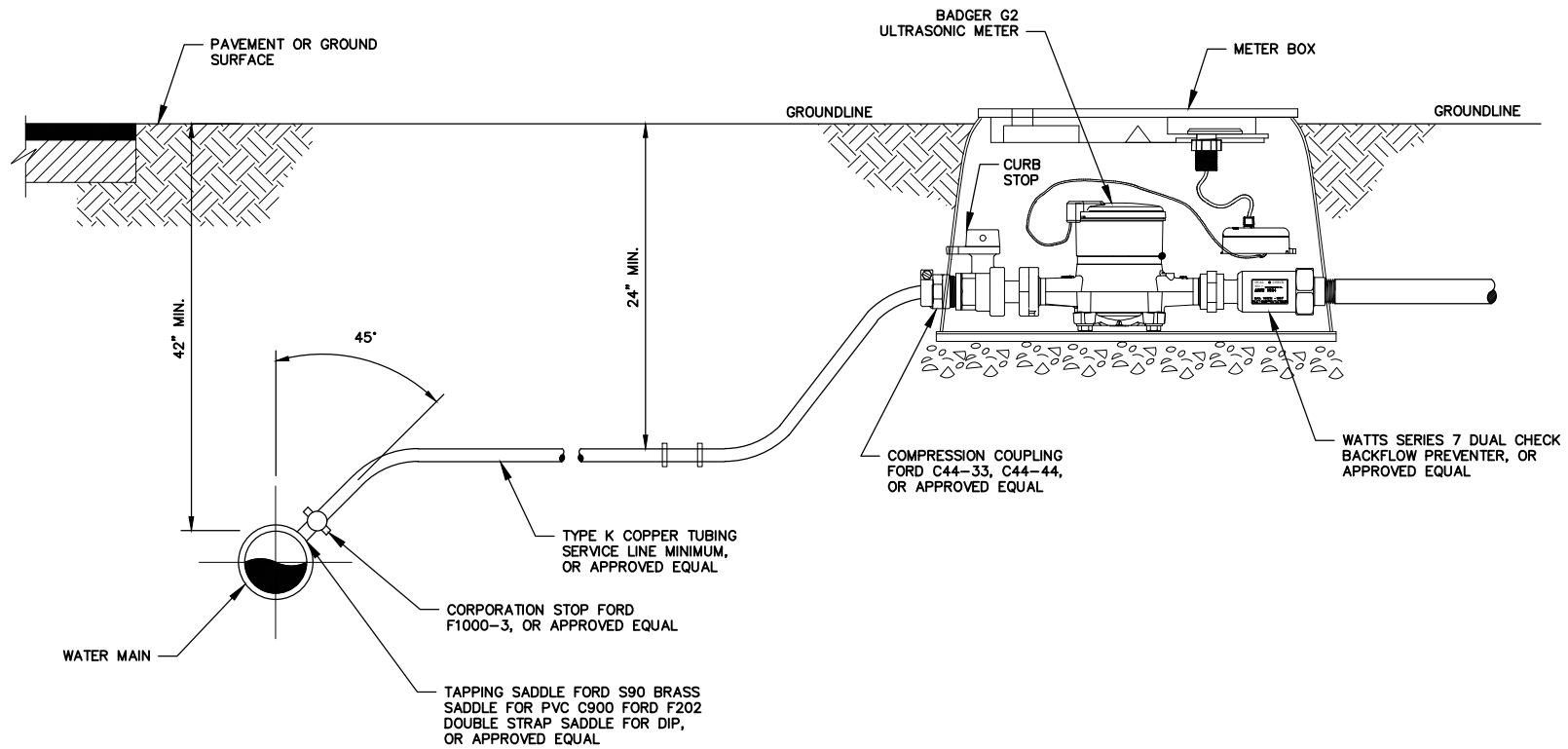
DESIGNED: J.F.C.

DRAWN: B.J.J.

DATE: 12/2024

SCALE: N.T.S.

BY	REVISIONS	DATE



MINIMUM DEPTH OF METER: 9"
 MAXIMUM DEPTH OF METER: 11"



245 McDonough Road
 Fayetteville, GA 30214
 770.320.6020

RESIDENTIAL SHORT SIDE SERVICE INSTALLATION

W-0015

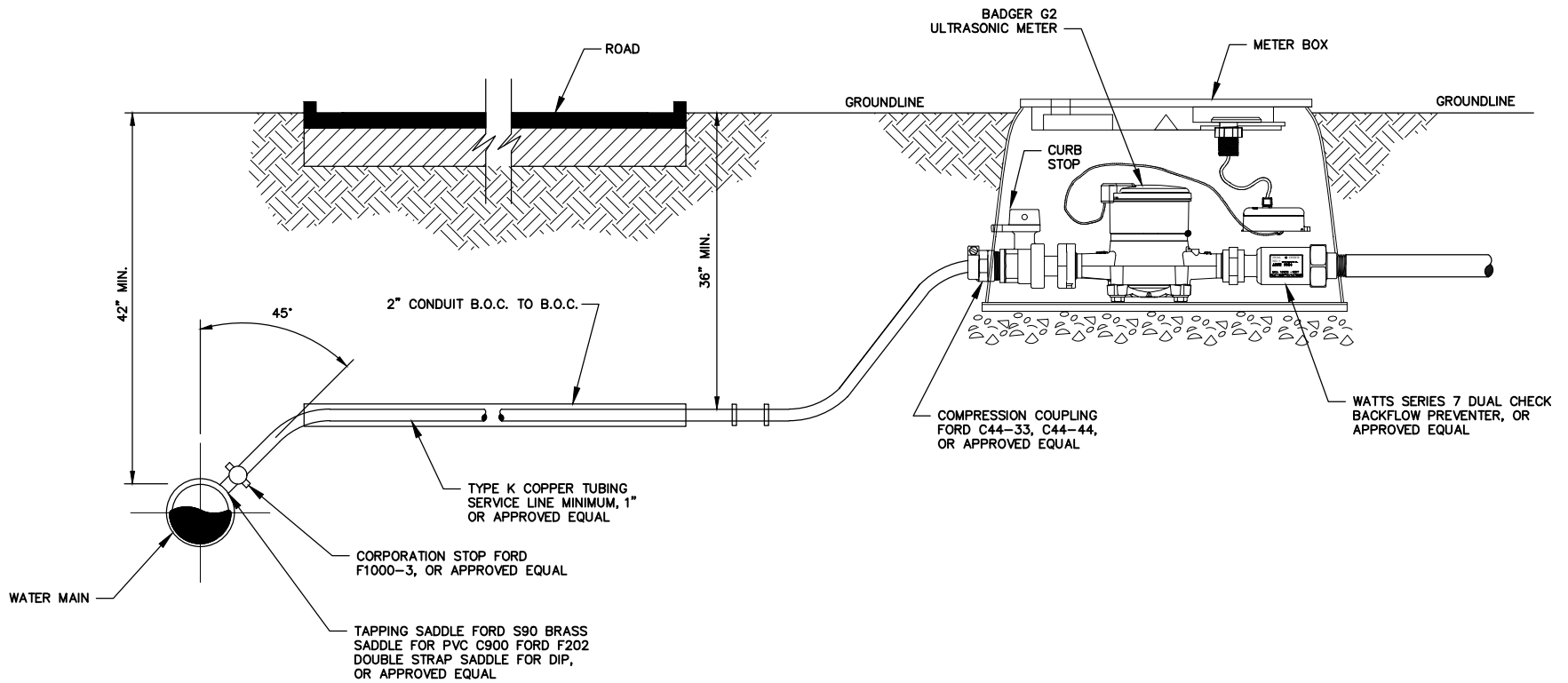
DESIGNED: J.F.C.

DRAWN: B.J.J.

DATE: 12/2024

SCALE: N.T.S.

BY	REVISIONS	DATE



MINIMUM DEPTH OF METER: 9"
 MAXIMUM DEPTH OF METER: 11"



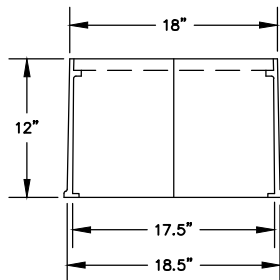
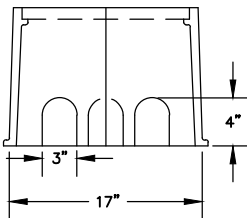
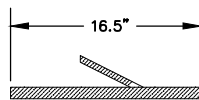
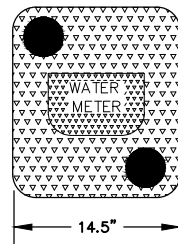
245 McDonough Road
 Fayetteville, GA 30214
 770.320.6020

RESIDENTIAL LONG SIDE SERVICE INSTALLATION

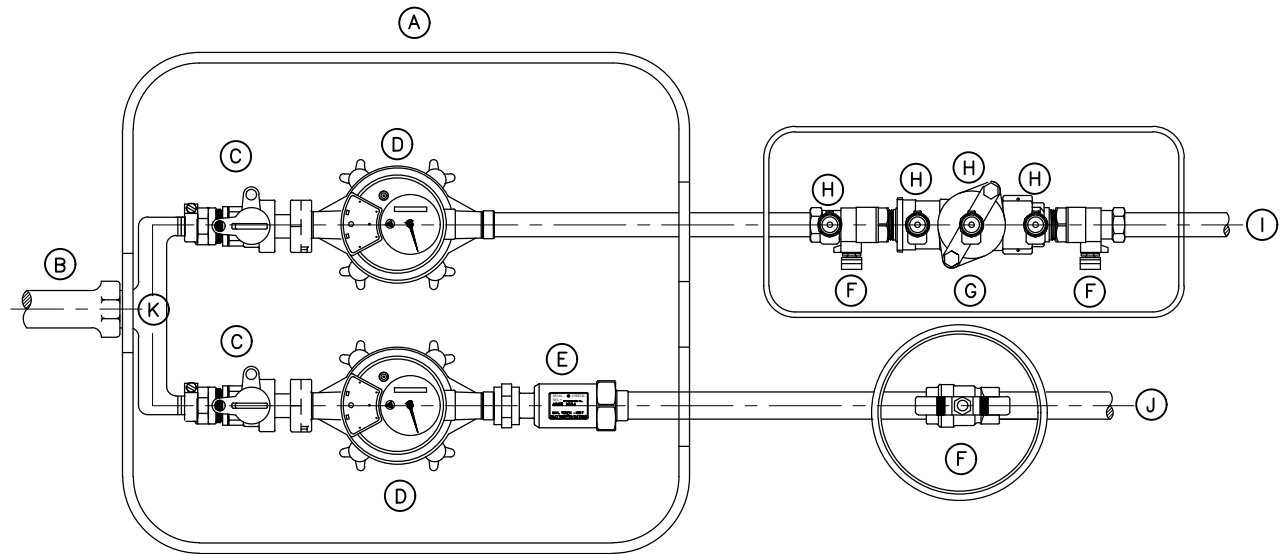
W-0016

DESIGNED: J.F.C.	DRAWN: B.J.J.
DATE: 12/2024	SCALE: N.T.S.

BY	REVISIONS	DATE



METER BOX DETAIL



- A. LOCATABLE POLYPROPYLENE LID AND BODY WITH TWO 2" HOLES FOR TOUCH READ CAPABILITY (DEVELOPER INSTALLED)
- B. TYPE K COPPER SERVICE LINE CONNECTION (DEVELOPER INSTALLED)
- C. CURB STOP-FORD B43-332W OR APPROVED EQUAL (DEVELOPER INSTALLED) MINIMUM DEPTH OF CURB STOP PLACEMENT: 9" FROM GROUND SURFACE TO CENTER OF FLOW MAXIMUM DEPTH OF CURB STOP PLACEMENT: 11" FROM GROUND SURFACE TO CENTER FLOW
- D. 3/4" BADGER G2 ULTRASONIC WATER METER
- E. DUAL CHECK- WILKINS 700 IUFMX34UF OR APPROVED EQUAL
- F. 3/4" WATTS BRASS FBVSSSTH BALL VALVE WITH STAINLESS STEEL "T" HANDLE OR APPROVED EQUAL
- G. DOUBLE CHECK VALVE
- H. TEST COCKS
- I. IRRIGATION LINE
- J. DOMESTIC LINE
- K. 1" x 3/4" x 7.5" BRANCH PIECE (DEVELOPER INSTALLED)



245 McDonough Road
Fayetteville, GA 30214
770.320.6020

DUAL RESIDENTIAL AND IRRIGATION INSTALLATION

W-0017

DESIGNED: J.F.C.

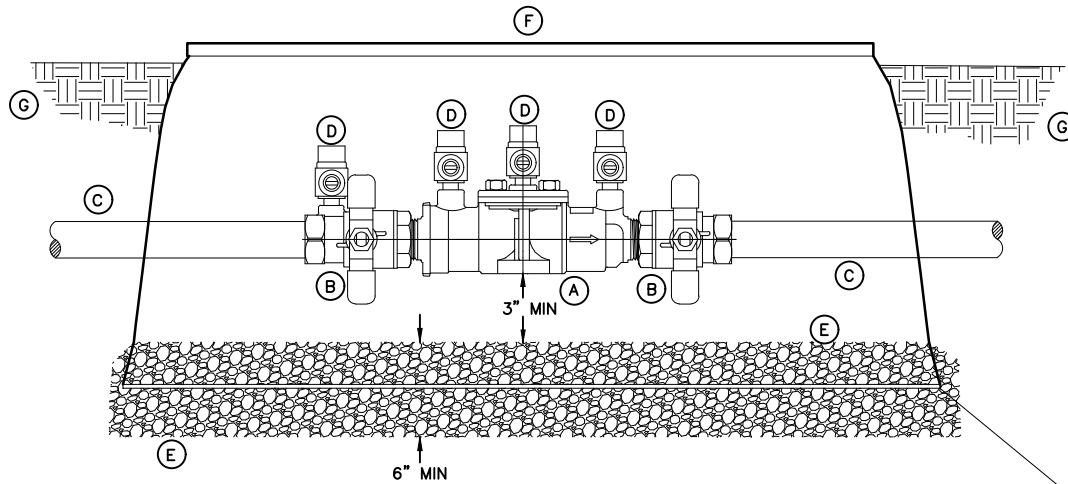
DRAWN: B.J.J.

DATE: 12/2024

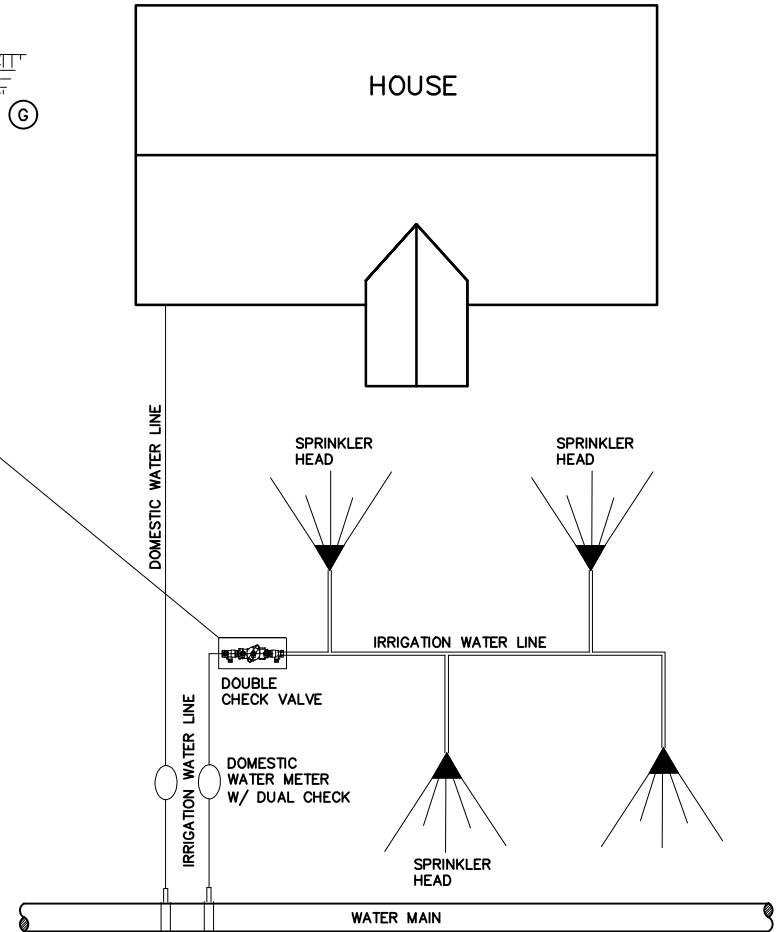
SCALE: N.T.S.

BY
REVISIONS
DATE

IRRIGATION METER PLAN VIEW



- A. DOUBLE CHECK VALVE
- B. 3/4" WATTS BRASS DOUBLE CHECK VALVE ASSEMBLY WITH STAINLESS STEEL
7" HANDLE OR APPROVED EQUAL
- C. WATER LINE
- D. TEST COCKS
- E. #57 STONE 6" MIN. DEPTH
- F. 12" EXTENSION RECTANGLE VALVE BOX 3/4" UP TO 1" (2" NEEDS 80" BOX)
- G. COMPACTED EARTH



245 McDonough Road
Fayetteville, GA 30214
770.320.6020

**RESIDENTIAL IRRIGATION
METER INSTALLATION**

W-0018

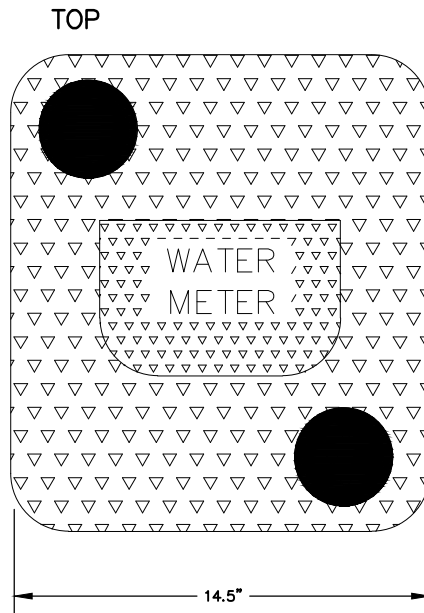
DESIGNED: J.F.C.

DRAWN: B.J.J.

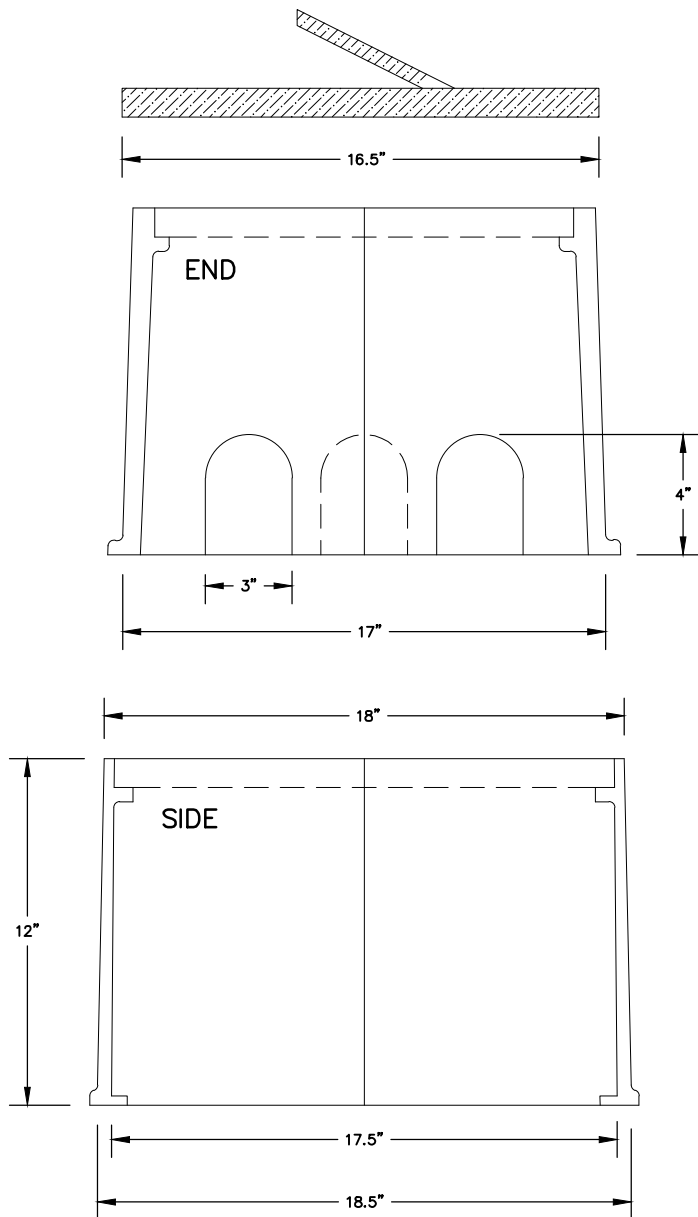
DATE: 12/2024

SCALE: N.T.S.

BY	REVISIONS	DATE



LOCATABLE POLYPROPYLENE LID AND BODY WITH TWO 2" HOLES FOR TOUCH READ CAPABILITY. DEVELOPER INSTALLED.



245 McDonough Road
 Fayetteville, GA 30214
 770.320.6020

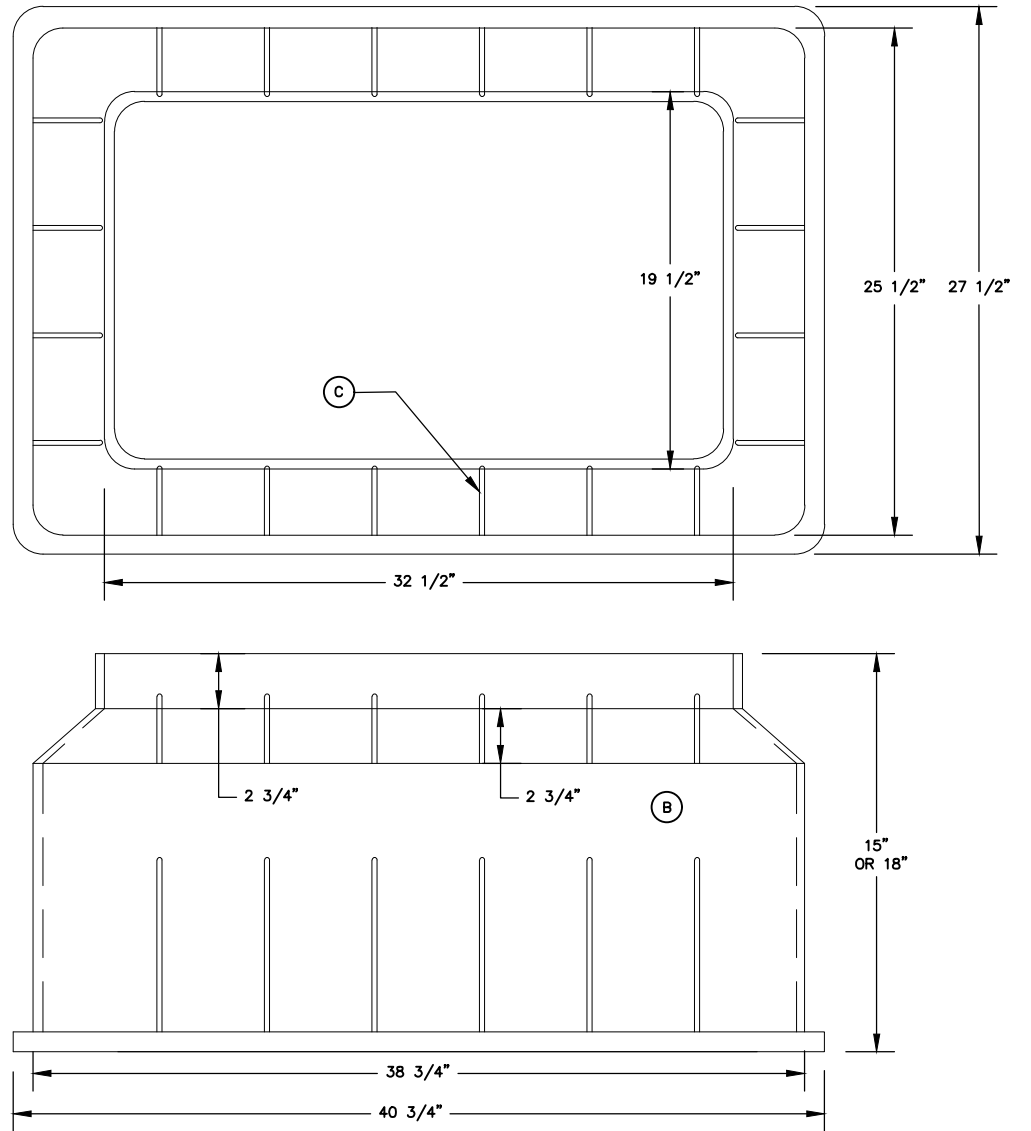
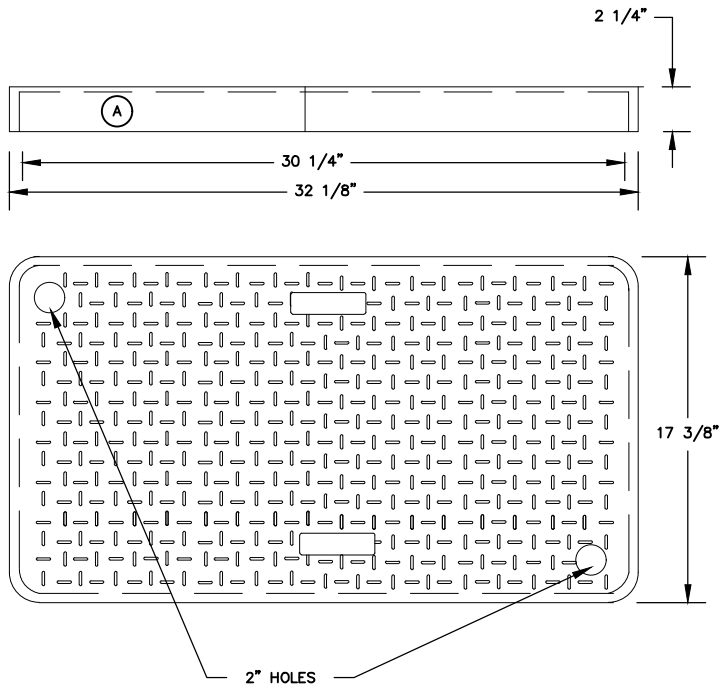
DUAL RESIDENTIAL AND IRRIGATION METER BOX

W-0019

DESIGNED: J.F.C.	DRAWN: B.J.J.
DATE: 12/2024	SCALE: N.T.S.

BY	REVISIONS	DATE

- A. INJECTION MOLDED OF STRUCTURAL FOAM POLYOLEFIN MATERIAL
- B. BODY: 17" x 30", TAPERED AND WALL THICKNESS OF .320"
- C. BOX BODY SHALL HAVE STRUCTURAL SUPPORT RIBS ON THE UNDERSIDE OF THE SEAT, MINIMUM THICKNESS OF .250"



245 McDonough Road
 Fayetteville, GA 30214
 770.320.6020

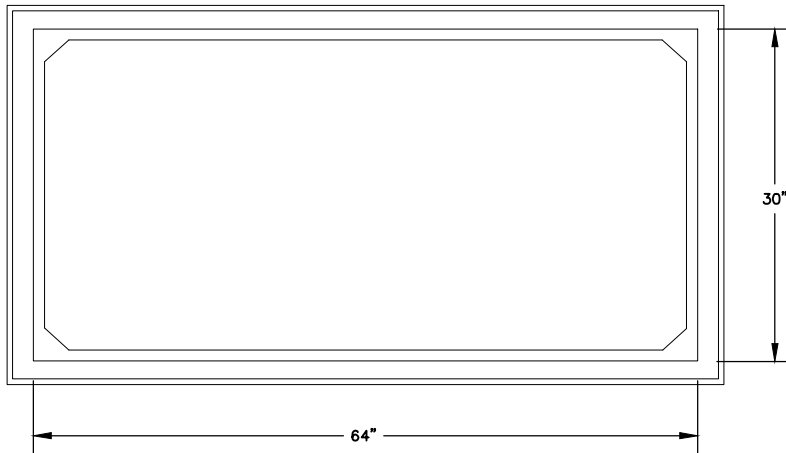
STANDARD 1" BADGER G2
 ULTRASONIC METER WITH
 DOUBLE CHECK VALVE
 ASSEMBLY, METER BOX AND LID

W-0020

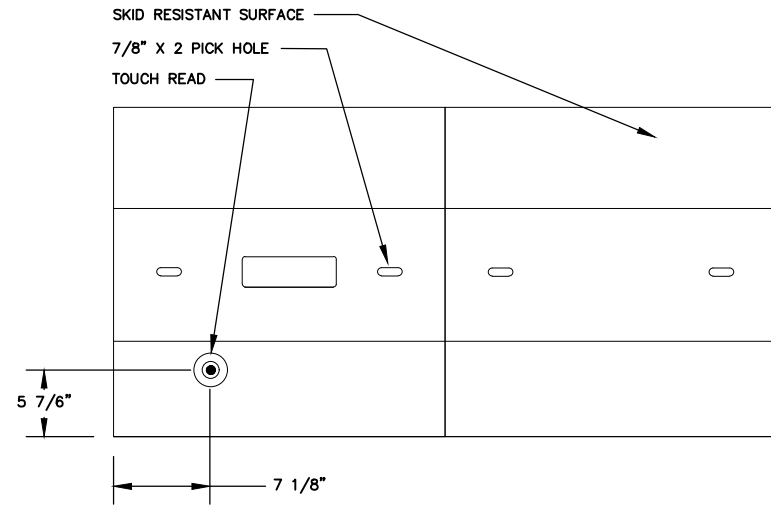
DESIGNED: J.F.C.	DRAWN: B.J.J.
DATE: 12/2024	SCALE: N.T.S.

BY	REVISIONS	DATE

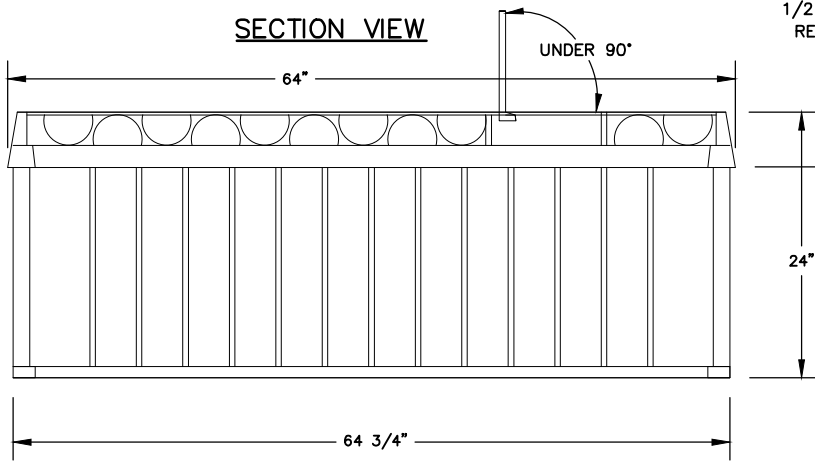
TOP VIEW



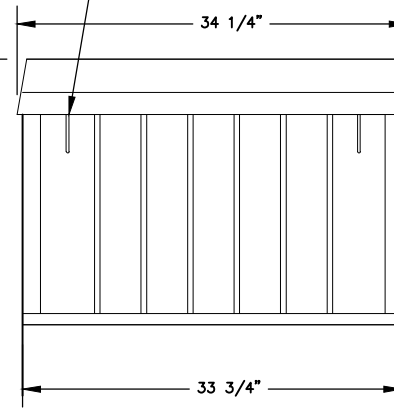
TWO PIECE COVER



SECTION VIEW



END VIEW



- MATERIAL: FIBERGLASS REINFORCED POLYMER CONCRETE & FIBERGLASS REINFORCED POLYMER.
- COLOR CONCRETE GRAY
- LOCATABLE TRAFFIC RATED LID



245 McDonough Road
Fayetteville, GA 30214
770.320.6020

STANDARD 2" AND 1-1/2"
BADGER G2 ULTRASONIC
METER BOX AND LID

W-0021

DESIGNED: J.F.C.	DRAWN: B.J.J.
DATE: 12/2024	SCALE: N.T.S.

BY	REVISIONS	DATE