

Lake McIntosh Park & Boat Ramp Facility

- | | |
|-----------------------|----------------------|
| ① PARK ENTRANCE/EXIT | ⑩ FENCE |
| ② FRONT WALKING TRAIL | ⑪ DAM ACCESS ROAD |
| ③ PLAYGROUND | ⑫ DAM |
| ④ PICNIC PAVILION | ⑬ DAM SPILLWAY |
| ⑤ PARKING | ⑭ BACK WALKING TRAIL |
| ⑥ RESTROOM | ⑮ PROPOSED ROAD |
| ⑦ BOAT RAMP | ⑯ PUMP HOUSE |
| ⑧ DOCK | ⑰ GAZEBO |
| ⑨ TRAILER PARKING | ⑱ GOLF CART PARKING |

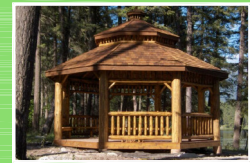
FRONT PARK ACREAGE - 9.3
 FRONT TRAIL LOOP LENGTH - 2958 ft. (0.6 mi)
 BACK PARK ACREAGE - 5.2
 BACK TRAIL LOOP LENGTH - 1868 ft. (0.34 mi)
 GAZEBO TRAIL - 430 ft. (0.081 mi)



Picnic Pavilion



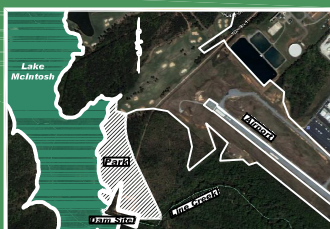
Restrooms



Gazebo



Lake McIntosh



Location Map

100 0 100 200 300
 GRAPHIC SCALE
 1" = 100'